

**Anti-CD20 Reference Antibody (obinutuzumab)  
Recombinant Antibody  
Catalog # APR10012****Specification**

---

**Anti-CD20 Reference Antibody (obinutuzumab) - Product Information**

|                   |                        |
|-------------------|------------------------|
| Application       | FC, E, FTA             |
| Primary Accession | <a href="#">P11836</a> |
| Reactivity        | Cynomolgus, Human      |
| Clonality         | Monoclonal             |
| Isotype           | IgG1                   |
| Calculated MW     | 146.32 KDa             |

**Anti-CD20 Reference Antibody (obinutuzumab) - Additional Information****Target/Specificity**  
CD20**Endotoxin**  
< 0.001EU/ µg,determined by LAL method.**Conjugation**  
Unconjugated**Expression system**  
CHO Cell**Format**  
Purified monoclonal antibody supplied in PBS, pH6.0, without preservative.This antibody is purified through a protein A column.**Anti-CD20 Reference Antibody (obinutuzumab) - Protein Information****Name** MS4A1**Synonyms** CD20**Function**

B-lymphocyte-specific membrane protein that plays a role in the regulation of cellular calcium influx necessary for the development, differentiation, and activation of B-lymphocytes (PubMed:<a href="http://www.uniprot.org/citations/12920111" target="\_blank">12920111</a>, PubMed:<a href="http://www.uniprot.org/citations/3925015" target="\_blank">3925015</a>, PubMed:<a href="http://www.uniprot.org/citations/7684739" target="\_blank">7684739</a>). Functions as a store-operated calcium (SOC) channel component promoting calcium influx after activation by the B-cell receptor/BCR (PubMed:<a href="http://www.uniprot.org/citations/12920111" target="\_blank">12920111</a>, PubMed:<a href="http://www.uniprot.org/citations/18474602" target="\_blank">18474602</a>, PubMed:<a href="http://www.uniprot.org/citations/7684739" target="\_blank">7684739</a>).

**Cellular Location**

Cell membrane; Multi-pass membrane protein. Cell membrane; Lipid-anchor. Note=Constitutively associated with membrane rafts.

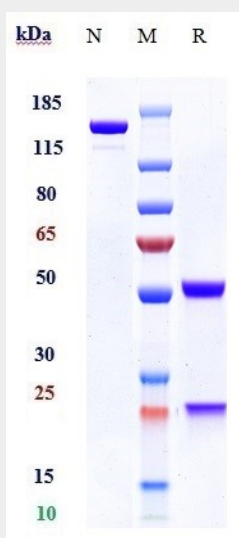
**Tissue Location**

Expressed on B-cells.

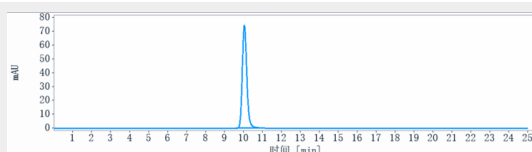
**Anti-CD20 Reference Antibody (obinutuzumab) - Protocols**

Provided below are standard protocols that you may find useful for product applications.

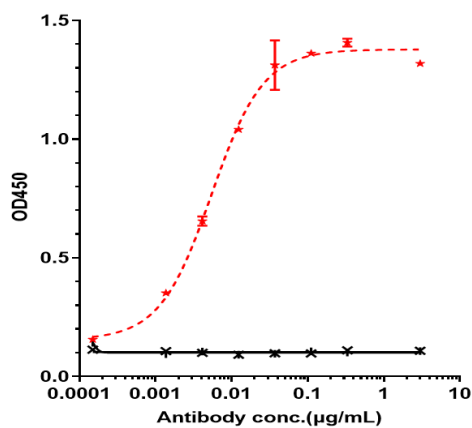
- [Western Blot](#)
- [Blocking Peptides](#)
- [Dot Blot](#)
- [Immunohistochemistry](#)
- [Immunofluorescence](#)
- [Immunoprecipitation](#)
- [Flow Cytometry](#)
- [Cell Culture](#)

**Anti-CD20 Reference Antibody (obinutuzumab) - Images**

Anti-CD20 Reference Antibody (obinutuzumab) on SDS-PAGE under reducing (R) condition. The gel was stained with Coomassie Blue. The purity of the protein is greater than 90%



The purity of Anti-CD20 Reference Antibody (obinutuzumab) is more than 95%, determined by SEC-HPLC.



Immobilized human CD20 His at 2 µg/mL can bind Anti-CD20 Reference Antibody (obinutuzumab) □ EC50=0.0054 µg/mL.