

**Anti-Spike RBD Reference Antibody (Cilgavimab)  
Recombinant Antibody  
Catalog # APR10006****Specification**

---

**Anti-Spike RBD Reference Antibody (Cilgavimab) - Product Information**

Application	FC, E, FTA
Primary Accession	<a href="#">NA</a>
Clonality	Monoclonal
Isotype	IgG1
Calculated MW	148.82 KDa

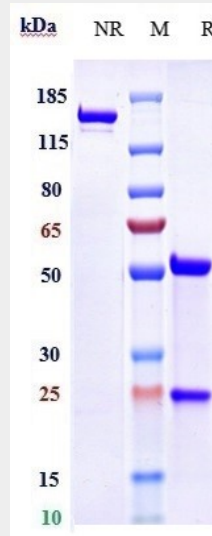
**Anti-Spike RBD Reference Antibody (Cilgavimab) - Additional Information****Target/Specificity**  
Spike RBD**Endotoxin**  
< 0.001EU/ µg,determined by LAL method.**Conjugation**  
Unconjugated**Expression system**  
CHO Cell**Format**  
Purified monoclonal antibody supplied in PBS, pH6.0, without preservative.This antibody is purified through a protein A column.**Anti-Spike RBD Reference Antibody (Cilgavimab) - Protein Information****Anti-Spike RBD Reference Antibody (Cilgavimab) - Protocols**

Provided below are standard protocols that you may find useful for product applications.

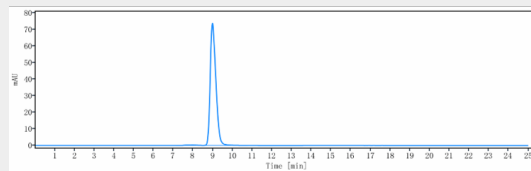
- [Western Blot](#)
- [Blocking Peptides](#)
- [Dot Blot](#)
- [Immunohistochemistry](#)
- [Immunofluorescence](#)
- [Immunoprecipitation](#)
- [Flow Cytometry](#)
- [Cell Culture](#)

**Anti-Spike RBD Reference Antibody (Cilgavimab) - Images**

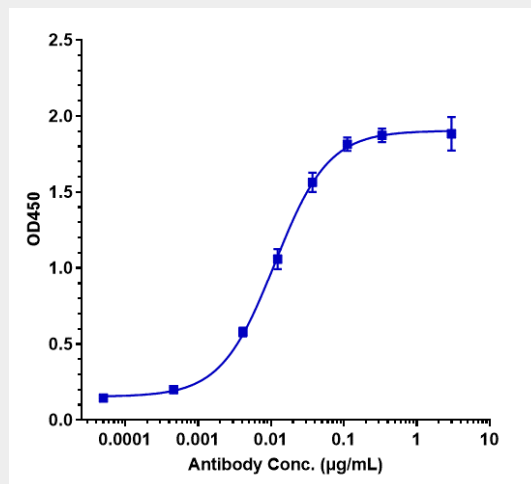
---



Anti-Spike RBD Reference Antibody (Cilgavimab) on SDS-PAGE under reducing (R) condition. The gel was stained with Coomassie Blue. The purity of the protein is greater than 95%



The purity of Anti-Spike RBD Reference Antibody (Cilgavimab) is more than 99.35% ,determined by SEC-HPLC.



Immobilized 2019nCoV RBD His at 2 µg/mL can bind Anti-Spike RBD Reference Antibody (Cilgavimab)  $EC_{50}=0.01122$  µg/mL.