

**CIRH1A Antibody (N-term)**  
**Affinity Purified Rabbit Polyclonal Antibody (Pab)**  
**Catalog # AP9951a****Specification**

---

**CIRH1A Antibody (N-term) - Product Information**

Application	WB, IHC-P, FC,E
Primary Accession	<a href="#">Q969X6</a>
Reactivity	Human
Host	Rabbit
Clonality	Polyclonal
Isotype	Rabbit IgG
Antigen Region	116-143

**CIRH1A Antibody (N-term) - Additional Information****Gene ID** 84916**Other Names**

Cirhin, CIRH1A, KIAA1988, UTP4

**Target/Specificity**

This CIRH1A antibody is generated from rabbits immunized with a KLH conjugated synthetic peptide between 116-143 amino acids from the N-terminal region of human CIRH1A.

**Dilution**

WB~~1:1000  
IHC-P~~1:50~100  
FC~~1:10~50

**Format**

Purified polyclonal antibody supplied in PBS with 0.09% (W/V) sodium azide. This antibody is purified through a protein A column, followed by peptide affinity purification.

**Storage**

Maintain refrigerated at 2-8°C for up to 2 weeks. For long term storage store at -20°C in small aliquots to prevent freeze-thaw cycles.

**Precautions**

CIRH1A Antibody (N-term) is for research use only and not for use in diagnostic or therapeutic procedures.

**CIRH1A Antibody (N-term) - Protein Information****Name** UTP4 ([HGNC:1983](#))

**Function** Ribosome biogenesis factor. Involved in nucleolar processing of pre-18S ribosomal RNA. Part of the small subunit (SSU) processome, first precursor of the small eukaryotic ribosomal

subunit. During the assembly of the SSU processome in the nucleolus, many ribosome biogenesis factors, an RNA chaperone and ribosomal proteins associate with the nascent pre-rRNA and work in concert to generate RNA folding, modifications, rearrangements and cleavage as well as targeted d involved in SSU pre-rRNA processing at sites A', A0, 1 and 2b. Required for optimal pre-ribosomal RNA transcription by RNA polymerase (PubMed:[17699751](#), PubMed:[19732766](#), PubMed:[34516797](#)). May be a transcriptional regulator (PubMed:[22916032](#)).

#### Cellular Location

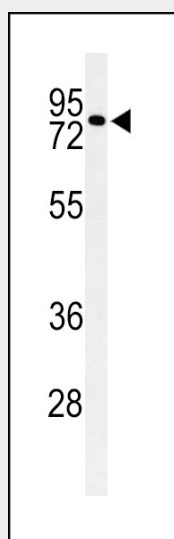
Nucleus, nucleolus. Chromosome Note=Found predominantly at the fibrillar center

#### CIRH1A Antibody (N-term) - Protocols

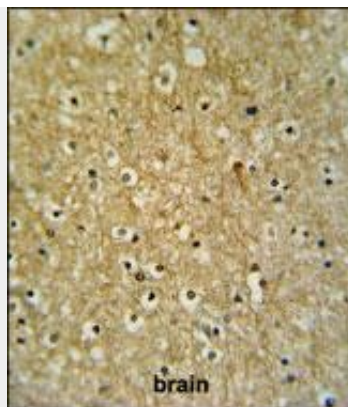
Provided below are standard protocols that you may find useful for product applications.

- [Western Blot](#)
- [Blocking Peptides](#)
- [Dot Blot](#)
- [Immunohistochemistry](#)
- [Immunofluorescence](#)
- [Immunoprecipitation](#)
- [Flow Cytometry](#)
- [Cell Culture](#)

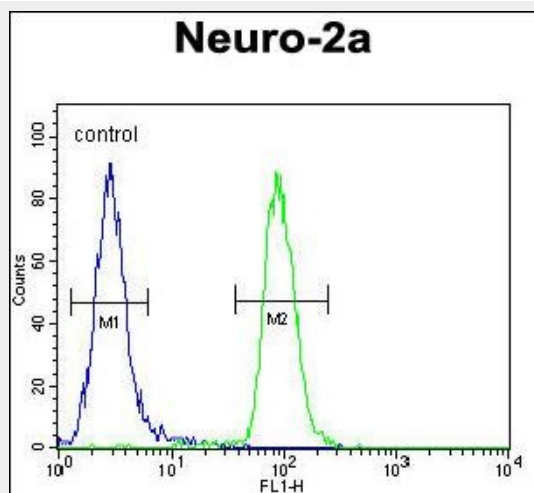
#### CIRH1A Antibody (N-term) - Images



Western blot analysis of CIRH1A Antibody (N-term) (Cat. #AP9951a) in Neuro-2a cell line lysates (35ug/lane). CIRH1A (arrow) was detected using the purified Pab.



CIRH1A Antibody (N-term) (Cat. #AP9951a) IHC analysis in formalin fixed and paraffin embedded brain tissue followed by peroxidase conjugation of the secondary antibody and DAB staining. This data demonstrates the use of the CIRH1A Antibody (N-term) for immunohistochemistry. Clinical relevance has not been evaluated.



CIRH1A Antibody (N-term) (Cat. #AP9951a) flow cytometric analysis of Neuro-2a cells (right histogram) compared to a negative control cell (left histogram). FITC-conjugated goat-anti-rabbit secondary antibodies were used for the analysis.

#### **CIRH1A Antibody (N-term) - Background**

CIRH1A encodes a WD40-repeat-containing protein that is localized to the nucleolus. Mutation of this gene causes North American Indian childhood cirrhosis, a severe intrahepatic cholestasis that results in transient neonatal jaundice, and progresses to periportal fibrosis and cirrhosis in childhood and adolescence.

#### **CIRH1A Antibody (N-term) - References**

Yu, B., et al. Exp. Cell Res. 315(18):3086-3098(2009) Carlton, V.E., et al. Ann. Med. 36(8):606-617(2004)