

NSE4A Antibody (N-term)
Affinity Purified Rabbit Polyclonal Antibody (Pab)
Catalog # AP9909a

Specification

NSE4A Antibody (N-term) - Product Information

Application	WB,E
Primary Accession	O9NXX6
Reactivity	Human
Host	Rabbit
Clonality	Polyclonal
Isotype	Rabbit IgG
Calculated MW	44301
Antigen Region	29-57

NSE4A Antibody (N-term) - Additional Information

Gene ID 54780

Other Names

Non-structural maintenance of chromosomes element 4 homolog A, NS4EA, Non-SMC element 4 homolog A, NSMCE4A, C10orf86

Target/Specificity

This NSE4A antibody is generated from rabbits immunized with a KLH conjugated synthetic peptide between 29-57 amino acids from the N-terminal region of human NSE4A.

Dilution

WB~~1:1000

Format

Purified polyclonal antibody supplied in PBS with 0.09% (W/V) sodium azide. This antibody is purified through a protein A column, followed by peptide affinity purification.

Storage

Maintain refrigerated at 2-8°C for up to 2 weeks. For long term storage store at -20°C in small aliquots to prevent freeze-thaw cycles.

Precautions

NSE4A Antibody (N-term) is for research use only and not for use in diagnostic or therapeutic procedures.

NSE4A Antibody (N-term) - Protein Information

Name NSMCE4A

Synonyms C10orf86

Function Component of the SMC5-SMC6 complex, a complex involved in DNA double-strand breaks by homologous recombination. The complex may promote sister chromatid homologous recombination by recruiting the SMC1-SMC3 cohesin complex to double-strand breaks. The complex is required for telomere maintenance via recombination in ALT (alternative lengthening of telomeres) cell lines and mediates sumoylation of shelterin complex (telosome) components which is proposed to lead to shelterin complex disassembly in ALT-associated PML bodies (APBs). Is involved in positive regulation of response to DNA damage stimulus.

Cellular Location

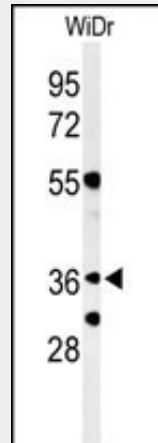
Nucleus. Chromosome, telomere

NSE4A Antibody (N-term) - Protocols

Provided below are standard protocols that you may find useful for product applications.

- [Western Blot](#)
- [Blocking Peptides](#)
- [Dot Blot](#)
- [Immunohistochemistry](#)
- [Immunofluorescence](#)
- [Immunoprecipitation](#)
- [Flow Cytometry](#)
- [Cell Culture](#)

NSE4A Antibody (N-term) - Images



Western blot analysis of NSE4A Antibody (N-term) (Cat. #AP9909a) in WiDr cell line lysates (35ug/lane). NSE4A (arrow) was detected using the purified Pab.

NSE4A Antibody (N-term) - References

Hu, B., et al. Mol. Microbiol. 55(6):1735-1750(2005)

NSE4A Antibody (N-term) - Citations

- [SLF2 Interacts with the SMC5/6 Complex to Direct Hepatitis B Virus Episomal DNA to Promyelocytic Leukemia Bodies for Transcriptional Repression](#)
- [PJA1 Coordinates with the SMC5/6 Complex to Restrict DNA Viruses and Episomal Genes through Interferon-independent Manner.](#)