

**IMP3 Antibody (C-term)**  
**Affinity Purified Rabbit Polyclonal Antibody (Pab)**  
**Catalog # AP9901b**

**Specification**

---

**IMP3 Antibody (C-term) - Product Information**

Application	WB, IHC-P, FC,E
Primary Accession	<a href="#">O9NV31</a>
Reactivity	Human, Mouse
Host	Rabbit
Clonality	Polyclonal
Isotype	Rabbit IgG
Calculated MW	21850
Antigen Region	156-184

**IMP3 Antibody (C-term) - Additional Information**

**Gene ID** 55272

**Other Names**

U3 small nucleolar ribonucleoprotein protein IMP3, U3 snoRNP protein IMP3, BRMS2, IMP3, C15orf12, MRPS4

**Target/Specificity**

This IMP3 antibody is generated from rabbits immunized with a KLH conjugated synthetic peptide between 156-184 amino acids from the C-terminal region of human IMP3.

**Dilution**

WB~~1:1000  
IHC-P~~1:50~100  
FC~~1:10~50

**Format**

Purified polyclonal antibody supplied in PBS with 0.09% (W/V) sodium azide. This antibody is purified through a protein A column, followed by peptide affinity purification.

**Storage**

Maintain refrigerated at 2-8°C for up to 2 weeks. For long term storage store at -20°C in small aliquots to prevent freeze-thaw cycles.

**Precautions**

IMP3 Antibody (C-term) is for research use only and not for use in diagnostic or therapeutic procedures.

**IMP3 Antibody (C-term) - Protein Information**

**Name** IMP3 ([HGNC:14497](#))

**Synonyms** C15orf12, MRPS4

**Function** Component of the 60-80S U3 small nucleolar ribonucleoprotein (U3 snoRNP). Required for the early cleavages during pre-18S ribosomal RNA processing (PubMed:[12655004](#)). Part of the small subunit (SSU) processome, first precursor of the small eukaryotic ribosomal subunit. During the assembly of the SSU processome in the nucleolus, many ribosome biogenesis factors, an RNA chaperone and ribosomal proteins associate with the nascent pre-rRNA and work in concert to generate RNA folding, modifications, rearrangements and cleavage as well as targeted degradation of pre-ribosomal RNA by the RNA exosome (PubMed:[34516797](#)).

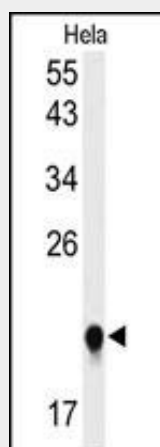
**Cellular Location**

Nucleus, nucleolus

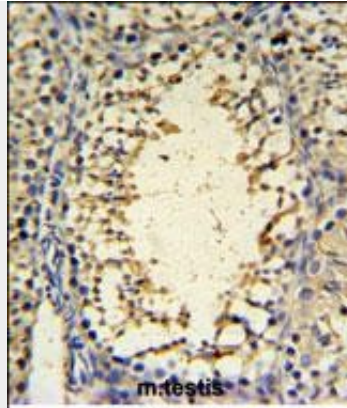
**IMP3 Antibody (C-term) - Protocols**

Provided below are standard protocols that you may find useful for product applications.

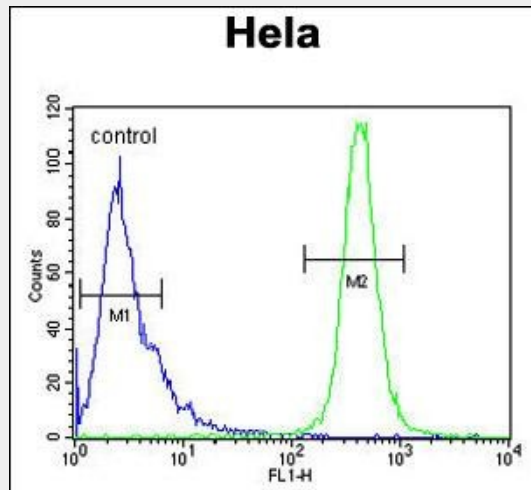
- [Western Blot](#)
- [Blocking Peptides](#)
- [Dot Blot](#)
- [Immunohistochemistry](#)
- [Immunofluorescence](#)
- [Immunoprecipitation](#)
- [Flow Cytometry](#)
- [Cell Culture](#)

**IMP3 Antibody (C-term) - Images**

Western blot analysis of IMP3 Antibody (C-term) (Cat. #AP9901b) in HeLa cell line lysates (35ug/lane). IMP3 (arrow) was detected using the purified Pab.



IMP3 Antibody (C-term) (Cat. #AP9901b) IHC analysis in formalin fixed and paraffin embedded mouse testis tissue followed by peroxidase conjugation of the secondary antibody and DAB staining. This data demonstrates the use of the IMP3 Antibody (C-term) for immunohistochemistry. Clinical relevance has not been evaluated.



IMP3 Antibody (C-term) (Cat. #AP9901b) flow cytometric analysis of HeLa cells (right histogram) compared to a negative control cell (left histogram). FITC-conjugated goat-anti-rabbit secondary antibodies were used for the analysis.

**IMP3 Antibody (C-term) - Background**

This gene encodes the human homolog of the yeast Imp3 protein. The protein localizes to the nucleoli and interacts with the U3 snoRNP complex. The protein contains an S4 domain.

**IMP3 Antibody (C-term) - References**

Li, D., et al. *Ann. Surg. Oncol.* 16(12):3499-3506(2009) Walter, O., et al. *Hum. Pathol.* 40(11):1528-1533(2009) Riener, M.O., et al. *Hum. Pathol.* 40(10):1377-1383(2009) Noske, A., et al. *Int. J. Gynecol. Pathol.* 28(3):203-210(2009)