

CDC45L Antibody (Center)
Affinity Purified Rabbit Polyclonal Antibody (Pab)
Catalog # AP9881c

Specification

CDC45L Antibody (Center) - Product Information

Application	WB, IHC-P, FC,E
Primary Accession	O75419
Reactivity	Human
Host	Rabbit
Clonality	Polyclonal
Isotype	Rabbit IgG
Calculated MW	65569
Antigen Region	236-263

CDC45L Antibody (Center) - Additional Information

Gene ID 8318

Other Names

Cell division control protein 45 homolog, PORC-PI-1, CDC45, CDC45L, CDC45L2

Target/Specificity

This CDC45L antibody is generated from rabbits immunized with a KLH conjugated synthetic peptide between 236-263 amino acids from the Central region of human CDC45L.

Dilution

WB~~1:1000
IHC-P~~1:50~100
FC~~1:10~50

Format

Purified polyclonal antibody supplied in PBS with 0.09% (W/V) sodium azide. This antibody is purified through a protein A column, followed by peptide affinity purification.

Storage

Maintain refrigerated at 2-8°C for up to 2 weeks. For long term storage store at -20°C in small aliquots to prevent freeze-thaw cycles.

Precautions

CDC45L Antibody (Center) is for research use only and not for use in diagnostic or therapeutic procedures.

CDC45L Antibody (Center) - Protein Information

Name CDC45 ([HGNC:1739](#))

Synonyms CDC45L, CDC45L2

Function Required for initiation of chromosomal DNA replication. Core component of CDC45-MCM-GINS (CMG) helicase, the molecular machine that unwinds template DNA during replication, and around which the replisome is built.

Cellular Location

Nucleus. Chromosome. Note=Associates with chromatin

Tissue Location

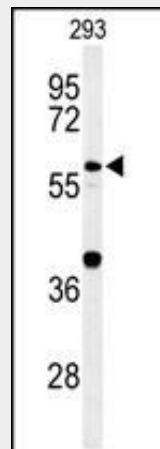
Widely expressed, highest levels are found in adult testis and thymus and in fetal liver

CDC45L Antibody (Center) - Protocols

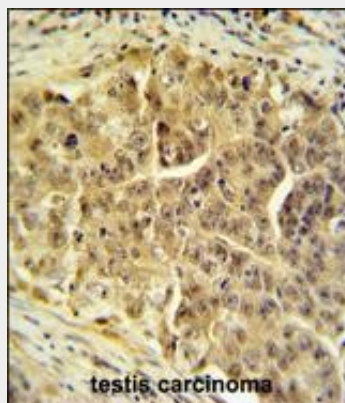
Provided below are standard protocols that you may find useful for product applications.

- [Western Blot](#)
- [Blocking Peptides](#)
- [Dot Blot](#)
- [Immunohistochemistry](#)
- [Immunofluorescence](#)
- [Immunoprecipitation](#)
- [Flow Cytometry](#)
- [Cell Culture](#)

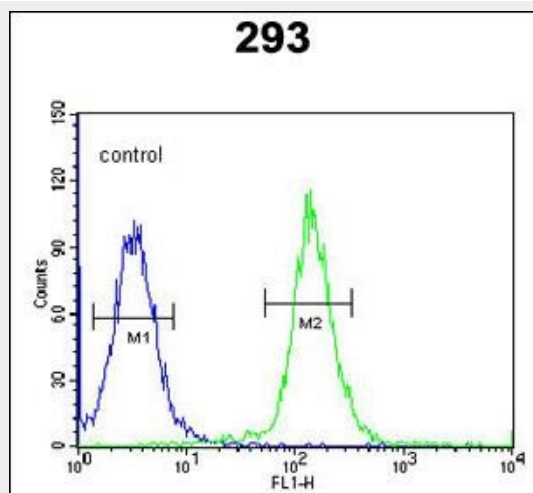
CDC45L Antibody (Center) - Images



Western blot analysis of CDC45L Antibody (Center) (Cat. #AP9881c) in 293 cell line lysates (35ug/lane). CDC45L (arrow) was detected using the purified Pab.



CDC45L Antibody (Center) (Cat. #AP9881c) IHC analysis in formalin fixed and paraffin embedded testis tissue followed by peroxidase conjugation of the secondary antibody and DAB staining. This data demonstrates the use of the CDC45L Antibody (Center) for immunohistochemistry. Clinical relevance has not been evaluated.



CDC45L Antibody (Center) (Cat. #AP9881c) flow cytometric analysis of 293 cells (right histogram) compared to a negative control cell (left histogram). FITC-conjugated goat-anti-rabbit secondary antibodies were used for the analysis.

CDC45L Antibody (Center) - Background

The protein encoded by this gene was identified by its strong similarity with *Saccharomyces cerevisiae* Cdc45, an essential protein required to the initiation of DNA replication. Cdc45 is a member of the highly conserved multiprotein complex including Cdc6/Cdc18, the minichromosome maintenance proteins (MCMs) and DNA polymerase, which is important for early steps of DNA replication in eukaryotes. This protein has been shown to interact with MCM7 and DNA polymerase alpha. Studies of the similar gene in *Xenopus* suggested that this protein play a pivotal role in the loading of DNA polymerase alpha onto chromatin. Multiple polyadenylation sites of this gene are reported.

CDC45L Antibody (Center) - References

- Chowdhury, A., et al. *Mol. Cell. Biol.* 30(6):1495-1507(2010)
- Im, J.S., et al. *Proc. Natl. Acad. Sci. U.S.A.* 106(37):15628-15632(2009)
- Ballabeni, A., et al. *J. Biol. Chem.* 284(5):3028-3036(2009)
- Enjuanes, A., et al. *Cancer Res.* 68(24):10178-10186(2008)
- Hoskins, J.M., et al. *Clin. Cancer Res.* 14(6):1788-1796(2008)