

**FCRL4 Antibody (C-term)**  
**Affinity Purified Rabbit Polyclonal Antibody (Pab)**  
**Catalog # AP9847b**

**Specification**

---

**FCRL4 Antibody (C-term) - Product Information**

Application	<b>WB, FC,E</b>
Primary Accession	<a href="#">O96PJ5</a>
Reactivity	<b>Human</b>
Host	<b>Rabbit</b>
Clonality	<b>Polyclonal</b>
Isotype	<b>Rabbit IgG</b>
Antigen Region	<b>480-507</b>

**FCRL4 Antibody (C-term) - Additional Information**

**Gene ID** 83417

**Other Names**

Fc receptor-like protein 4, FcR-like protein 4, FcRL4, Fc receptor homolog 4, FcRH4, IFGP family protein 2, hIFGP2, Immune receptor translocation-associated protein 1, CD307d, FCRL4, FCRH4, IFGP2, IRTA1

**Target/Specificity**

This FCRL4 antibody is generated from rabbits immunized with a KLH conjugated synthetic peptide between 480-507 amino acids from the C-terminal region of human FCRL4.

**Dilution**

WB~~1:2000  
FC~~1:10~50

**Format**

Purified polyclonal antibody supplied in PBS with 0.09% (W/V) sodium azide. This antibody is purified through a protein A column, followed by peptide affinity purification.

**Storage**

Maintain refrigerated at 2-8°C for up to 2 weeks. For long term storage store at -20°C in small aliquots to prevent freeze-thaw cycles.

**Precautions**

FCRL4 Antibody (C-term) is for research use only and not for use in diagnostic or therapeutic procedures.

**FCRL4 Antibody (C-term) - Protein Information**

**Name** FCRL4

**Synonyms** FCRH4, IFGP2, IRTA1

**Function** May function as an inhibitor of the B-cell receptor signaling. May function in the B-cell-mediated immune response.

**Cellular Location**

Cell membrane; Single-pass type I membrane protein

**Tissue Location**

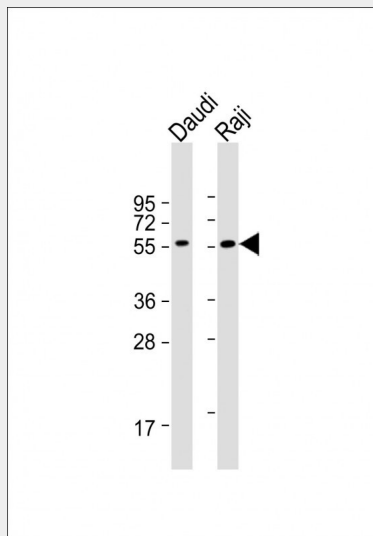
Specifically expressed by memory and monocytoid B- cells which populate spleen and lymph nodes. Preferentially expressed in memory B-cells associated with mucosal tissue (at protein level)

**FCRL4 Antibody (C-term) - Protocols**

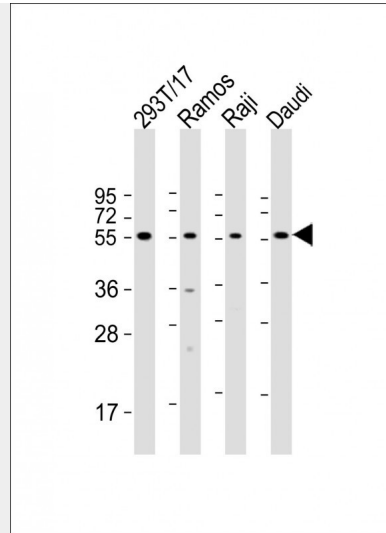
Provided below are standard protocols that you may find useful for product applications.

- [Western Blot](#)
- [Blocking Peptides](#)
- [Dot Blot](#)
- [Immunohistochemistry](#)
- [Immunofluorescence](#)
- [Immunoprecipitation](#)
- [Flow Cytometry](#)
- [Cell Culture](#)

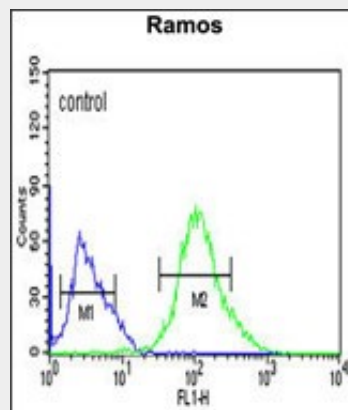
**FCRL4 Antibody (C-term) - Images**



All lanes : Anti-FCRL4 Antibody (C-term) at 1:2000 dilution Lane 1: Daudi whole cell lysate Lane 2: Raji whole cell lysate Lysates/proteins at 20 µg per lane. Secondary Goat Anti-Rabbit IgG, (H+L), Peroxidase conjugated at 1/10000 dilution. Predicted band size : 57 kDa Blocking/Dilution buffer: 5% NFD/MTBST.



All lanes : Anti-FCRL4 Antibody (C-term) at 1:2000 dilution Lane 1: 293T/17 whole cell lysate Lane 2: Ramos whole cell lysate Lane 3: Raji whole cell lysate Lane 4: Daudi whole cell lysate Lysates/proteins at 20 µg per lane. Secondary Goat Anti-Rabbit IgG, (H+L), Peroxidase conjugated at 1/10000 dilution. Predicted band size : 57 kDa Blocking/Dilution buffer: 5% NFDM/TBST.



FCRL4 Antibody (C-term) (Cat. #AP9847b) flow cytometric analysis of Ramos cells (right histogram) compared to a negative control cell (left histogram).FITC-conjugated goat-anti-rabbit secondary antibodies were used for the analysis.

### FCRL4 Antibody (C-term) - Background

This gene encodes a member of the immunoglobulin receptor superfamily and is one of several Fc receptor-like glycoproteins clustered on the long arm of chromosome 1. The encoded protein has four extracellular C2-type immunoglobulin domains, a transmembrane domain and a cytoplasmic domain that contains three immune-receptor tyrosine-based inhibitory motifs. This protein may play a role in the function of memory B-cells in the epithelia. Aberrations in the chromosomal region encoding this gene are associated with non-Hodgkin lymphoma and multiple myeloma.

### FCRL4 Antibody (C-term) - References

- Davila, S., et al. Genes Immun. (2010) In press :
- Weiss, G.E., et al. J. Immunol. 183(3):2176-2182(2009)
- Kazemi, T., et al. Cancer Immunol. Immunother. 58(6):989-996(2009)
- Falini, B., et al. Blood 102(10):3684-3692(2003)