

**ETS2 Antibody (Center)**  
**Affinity Purified Rabbit Polyclonal Antibody (Pab)**  
**Catalog # AP9846C**

**Specification**

---

**ETS2 Antibody (Center) - Product Information**

|                   |   |
|-------------------|---|
| Application       | WB, IHC-P, FC,E                                 |
| Primary Accession | <a href="#">P15036</a>                          |
| Other Accession   | <a href="#">P15037</a> , <a href="#">A1A4L6</a> |
| Reactivity        | Human   |
| Predicted         | Bovine, Mouse                                   |
| Host              | Rabbit  |
| Clonality         | Polyclonal                                      |
| Isotype           | Rabbit IgG                                      |
| Antigen Region    | 146-173   |

**ETS2 Antibody (Center) - Additional Information**

**Gene ID** 2114

**Other Names**

Protein C-ets-2, ETS2

**Target/Specificity**

This ETS2 antibody is generated from rabbits immunized with a KLH conjugated synthetic peptide between 146-173 amino acids from the Central region of human ETS2.

**Dilution**

WB~~1:2000  
IHC-P~~1:50~100  
FC~~1:10~50

**Format**

Purified polyclonal antibody supplied in PBS with 0.09% (W/V) sodium azide. This antibody is purified through a protein A column, followed by peptide affinity purification.

**Storage**

Maintain refrigerated at 2-8°C for up to 2 weeks. For long term storage store at -20°C in small aliquots to prevent freeze-thaw cycles.

**Precautions**

ETS2 Antibody (Center) is for research use only and not for use in diagnostic or therapeutic procedures.

**ETS2 Antibody (Center) - Protein Information**

**Name** ETS2

**Function** Transcription factor activating transcription. Binds specifically the DNA GGAA/T core motif (Ets-binding site or EBS) in gene promoters and stimulates transcription.

**Cellular Location**

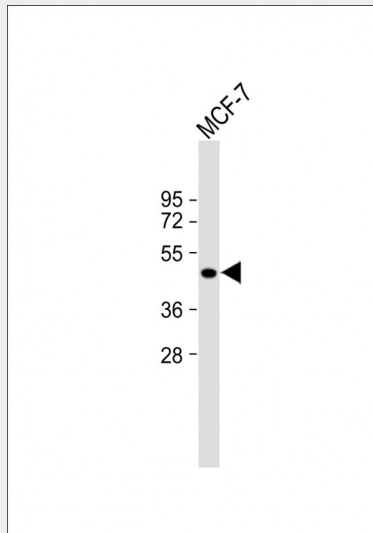
Nucleus.

**ETS2 Antibody (Center) - Protocols**

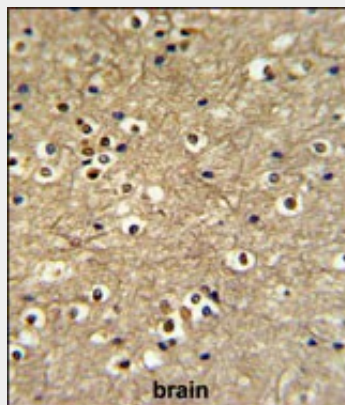
Provided below are standard protocols that you may find useful for product applications.

- [Western Blot](#)
- [Blocking Peptides](#)
- [Dot Blot](#)
- [Immunohistochemistry](#)
- [Immunofluorescence](#)
- [Immunoprecipitation](#)
- [Flow Cytometry](#)
- [Cell Culture](#)

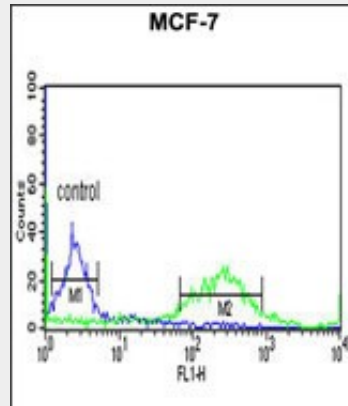
**ETS2 Antibody (Center) - Images**



Anti-ETS2 Antibody (Center) at 1:2000 dilution + MCF-7 whole cell lysate Lysates/proteins at 20 µg per lane. Secondary Goat Anti-Rabbit IgG, (H+L), Peroxidase conjugated at 1/10000 dilution. Predicted band size : 53 kDa Blocking/Dilution buffer: 5% NFDN/TBST.



ETS2 Antibody (Center) (Cat. #AP9846c) IHC analysis in formalin fixed and paraffin embedded brain tissue followed by peroxidase conjugation of the secondary antibody and DAB staining. This data demonstrates the use of the ETS2 Antibody (Center) for immunohistochemistry. Clinical relevance has not been evaluated.



ETS2 Antibody (Center) (Cat. #AP9846c) flow cytometric analysis of MCF-7 cells (right histogram) compared to a negative control cell (left histogram). FITC-conjugated goat-anti-rabbit secondary antibodies were used for the analysis.

#### **ETS2 Antibody (Center) - Background**

ETS transcription factors, such as ETS2, regulate numerous genes and are involved in stem cell development, cell senescence and death, and tumorigenesis. The conserved ETS domain within these proteins is a winged helix-turn-helix DNA-binding domain that recognizes the core consensus DNA sequence GGAA/T of target genes.

#### **ETS2 Antibody (Center) - References**

Zabuawala, T., et al. *Cancer Res.* 70(4):1323-1333(2010)  
Yerges, L.M., et al. *J. Bone Miner. Res.* 24(12):2039-2049(2009)  
Shalaby, A.A., et al. *Mod. Pathol.* 22(8):996-1005(2009)  
Sutter, W., et al. *J. Craniomaxillofac Surg* 37(5):263-271(2009)  
Staun-Ram, E., et al. *Reprod. Biol. Endocrinol.* 7, 135 (2009)

#### **ETS2 Antibody (Center) - Citations**

- [ETS2 mediated tumor suppressive function and MET oncogene inhibition in human non-small cell lung cancer.](#)