

GAGE7 Antibody (C-term)
Affinity Purified Rabbit Polyclonal Antibody (Pab)
Catalog # AP9756b**Specification**

GAGE7 Antibody (C-term) - Product Information

Application	WB, IHC-P, FC,E
Primary Accession	O76087
Other Accession	O9UEU5 , POCL82 , A6NDE8 , POCL81 , POCL80 , A1L429 , Q13070 , Q13069 , Q13067 , Q13066 , Q6NT46
Reactivity	Human
Host	Rabbit
Clonality	Polyclonal
Isotype	Rabbit IgG
Calculated MW	12978
Antigen Region	87-116

GAGE7 Antibody (C-term) - Additional Information

Gene ID 100008586;2579;26748;645073;729428

Other Names

G antigen 7, GAGE-7, AL4, Cancer/testis antigen 47, CT47, GAGE-12I, GAGE-7B, GAGE-8, GAGE7, GAGE12I, GAGE7B

Target/Specificity

This GAGE7 antibody is generated from rabbits immunized with a KLH conjugated synthetic peptide between 87-116 amino acids from the C-terminal region of human GAGE7.

Dilution

WB~~1:1000
IHC-P~~1:50~100
FC~~1:10~50

Format

Purified polyclonal antibody supplied in PBS with 0.09% (W/V) sodium azide. This antibody is purified through a protein A column, followed by peptide affinity purification.

Storage

Maintain refrigerated at 2-8°C for up to 2 weeks. For long term storage store at -20°C in small aliquots to prevent freeze-thaw cycles.

Precautions

GAGE7 Antibody (C-term) is for research use only and not for use in diagnostic or therapeutic procedures.

GAGE7 Antibody (C-term) - Protein Information

Name GAGE7

Synonyms GAGE12I, GAGE7B

Tissue Location

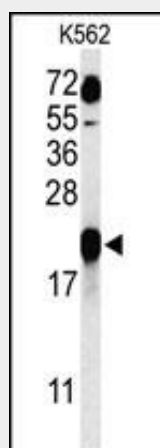
Expressed in some prostate cancer tissues but not in normal prostate tissue

GAGE7 Antibody (C-term) - Protocols

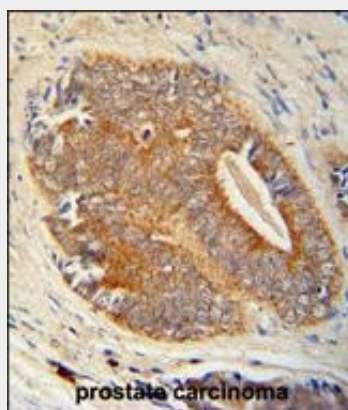
Provided below are standard protocols that you may find useful for product applications.

- [Western Blot](#)
- [Blocking Peptides](#)
- [Dot Blot](#)
- [Immunohistochemistry](#)
- [Immunofluorescence](#)
- [Immunoprecipitation](#)
- [Flow Cytometry](#)
- [Cell Culture](#)

GAGE7 Antibody (C-term) - Images

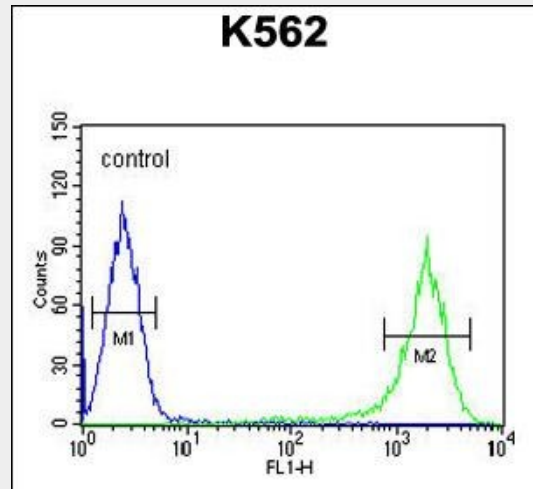


Western blot analysis of GAGE7 Antibody (C-term) (Cat. #AP9756b) in K562 cell line lysates (35ug/lane). GAGE7 (arrow) was detected using the purified Pab.



GAGE7 Antibody (C-term) (Cat. #AP9756b) immunohistochemistry analysis in formalin fixed and

paraffin embedded human prostate carcinoma followed by peroxidase conjugation of the secondary antibody and DAB staining. This data demonstrates the use of the GAGE7 Antibody (C-term) for immunohistochemistry. Clinical relevance has not been evaluated.



GAGE7 Antibody (C-term) (Cat. #AP9756b) flow cytometric analysis of K562 cells (right histogram) compared to a negative control cell (left histogram). FITC-conjugated goat-anti-rabbit secondary antibodies were used for the analysis.

GAGE7 Antibody (C-term) - References

Gjerstorff, M.F., et al. Tissue Antigens 71(3):187-192(2008)