

**CD7 Antibody (Center)**  
**Affinity Purified Rabbit Polyclonal Antibody (Pab)**  
**Catalog # AP9733C**

**Specification**

---

**CD7 Antibody (Center) - Product Information**

Application	WB,E
Primary Accession	<a href="#">P09564</a>
Reactivity	Human
Host	Rabbit
Clonality	Polyclonal
Isotype	Rabbit IgG
Calculated MW	25409
Antigen Region	65-91

**CD7 Antibody (Center) - Additional Information**

**Gene ID** 924

**Other Names**

T-cell antigen CD7, GP40, T-cell leukemia antigen, T-cell surface antigen Leu-9, TP41, CD7, CD7

**Target/Specificity**

This CD7 antibody is generated from rabbits immunized with a KLH conjugated synthetic peptide between 65-91 amino acids from the Central region of human CD7.

**Dilution**

WB~~1:1000

**Format**

Purified polyclonal antibody supplied in PBS with 0.09% (W/V) sodium azide. This antibody is purified through a protein A column, followed by peptide affinity purification.

**Storage**

Maintain refrigerated at 2-8°C for up to 2 weeks. For long term storage store at -20°C in small aliquots to prevent freeze-thaw cycles.

**Precautions**

CD7 Antibody (Center) is for research use only and not for use in diagnostic or therapeutic procedures.

**CD7 Antibody (Center) - Protein Information**

**Name** CD7

**Function** Transmembrane glycoprotein expressed by T-cells and natural killer (NK) cells and their precursors (PubMed:[7506726](#)). Plays a costimulatory role in T-cell activation upon binding to its ligand K12/SECTM1 (PubMed:[10652336](#)). In turn, mediates the production of cytokines such as IL-2

(PubMed:[1709867](#)). On resting NK-cells, CD7 activation results in a significant induction of interferon-gamma levels (PubMed:[7506726](#)).

#### Cellular Location

Membrane; Single-pass type I membrane protein.

#### Tissue Location

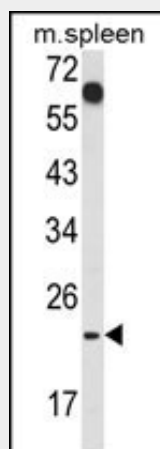
Expressed on T-cells and natural killer (NK) cells and their precursors.

### CD7 Antibody (Center) - Protocols

Provided below are standard protocols that you may find useful for product applications.

- [Western Blot](#)
- [Blocking Peptides](#)
- [Dot Blot](#)
- [Immunohistochemistry](#)
- [Immunofluorescence](#)
- [Immunoprecipitation](#)
- [Flow Cytometry](#)
- [Cell Culture](#)

### CD7 Antibody (Center) - Images



Western blot analysis of CD7 Antibody (Center) (Cat. #AP9733c) in mouse spleen tissue lysates (35ug/lane). CD7 (arrow) was detected using the purified Pab.

### CD7 Antibody (Center) - Background

CD7 is a transmembrane protein which is a member of the immunoglobulin superfamily. This protein is found on thymocytes and mature T cells. It plays an essential role in T-cell interactions and also in T-cell/B-cell interaction during early lymphoid development.

### CD7 Antibody (Center) - References

- SundarRaj, S., et al. Mol. Immunol. 46(16):3411-3419(2009)  
Seegmiller, A.C., et al. Cytometry B Clin Cytom 76(3):169-174(2009)  
Liu, T.Y., et al. Histopathology 54(2):214-220(2009)