

PDHA1 Antibody (Center)
Affinity Purified Rabbit Polyclonal Antibody (Pab)
Catalog # AP9652c

Specification

PDHA1 Antibody (Center) - Product Information

| | |
|-------------------|--|
| Application | WB,E |
| Primary Accession | P08559 |
| Other Accession | P26284 , P29804 , P35486 , Q8HXW9 , A7MB35 , Q6P948 |
| Reactivity | Human |
| Predicted | Zebrafish, Bovine, Monkey, Mouse, Pig, Rat |
| Host | Rabbit |
| Clonality | Polyclonal |
| Isotype | Rabbit IgG |
| Calculated MW | 43296 |
| Antigen Region | 226-255 |

PDHA1 Antibody (Center) - Additional Information

Gene ID 5160

Other Names

Pyruvate dehydrogenase E1 component subunit alpha, somatic form, mitochondrial, PDHE1-A type I, PDHA1, PHE1A

Target/Specificity

This PDHA1 antibody is generated from rabbits immunized with a KLH conjugated synthetic peptide between 226-255 amino acids from the Central region of human PDHA1.

Dilution

WB~~1:1000

Format

Purified polyclonal antibody supplied in PBS with 0.09% (W/V) sodium azide. This antibody is purified through a protein A column, followed by peptide affinity purification.

Storage

Maintain refrigerated at 2-8°C for up to 2 weeks. For long term storage store at -20°C in small aliquots to prevent freeze-thaw cycles.

Precautions

PDHA1 Antibody (Center) is for research use only and not for use in diagnostic or therapeutic procedures.

PDHA1 Antibody (Center) - Protein Information

Name PDHA1

Synonyms PHE1A

Function The pyruvate dehydrogenase complex catalyzes the overall conversion of pyruvate to acetyl-CoA and CO₂, and thereby links the glycolytic pathway to the tricarboxylic cycle.

Cellular Location

Mitochondrion matrix.

Tissue Location

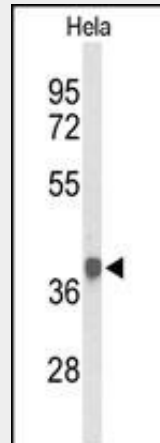
Ubiquitous.

PDHA1 Antibody (Center) - Protocols

Provided below are standard protocols that you may find useful for product applications.

- [Western Blot](#)
- [Blocking Peptides](#)
- [Dot Blot](#)
- [Immunohistochemistry](#)
- [Immunofluorescence](#)
- [Immunoprecipitation](#)
- [Flow Cytometry](#)
- [Cell Culture](#)

PDHA1 Antibody (Center) - Images



Western blot analysis of PDHA1 Antibody (Center) (Cat. #AP9652c) in HeLa cell line lysates (35ug/lane). PDHA1 (arrow) was detected using the purified Pab.

PDHA1 Antibody (Center) - Background

The pyruvate dehydrogenase (PDH) complex is a nuclear-encoded mitochondrial multienzyme complex that catalyzes the overall conversion of pyruvate to acetyl-CoA and CO₂, and provides the primary link between glycolysis and the tricarboxylic acid (TCA) cycle. The PDH complex is composed of multiple copies of three enzymatic components: pyruvate dehydrogenase (E1), dihydrolipoamide acetyltransferase (E2) and lipoamide dehydrogenase (E3). The E1 enzyme is a heterotetramer of two alpha and two beta subunits. This gene encodes the E1 alpha 1 subunit containing the E1 active site, and plays a key role in the function of the PDH complex. Mutations in this gene are associated with pyruvate dehydrogenase E1-alpha deficiency and X-linked Leigh syndrome.

PDHA1 Antibody (Center) - References

Glushakova, L.G., et al. Mol. Genet. Metab. 98(3):289-299(2009)

Joao Silva, M., et al. Eur. J. Pediatr. 168(1):17-22(2009)

Boichard, A., et al. Mol. Genet. Metab. 93(3):323-330(2008)