

NPW Antibody (C-term)
Affinity Purified Rabbit Polyclonal Antibody (Pab)
Catalog # AP9644b

Specification

NPW Antibody (C-term) - Product Information

Application	WB,E
Primary Accession	Q8N729
Reactivity	Human
Host	Rabbit
Clonality	Polyclonal
Isotype	Rabbit IgG
Calculated MW	18048
Antigen Region	121-150

NPW Antibody (C-term) - Additional Information

Gene ID 283869

Other Names

Neuropeptide W, Preproprotein L8, hPPL8, Neuropeptide W-23, NPW23, hL8, Neuropeptide W-30, NPW30, hL8C, NPW, PPL8, PPNPW

Target/Specificity

This NPW antibody is generated from rabbits immunized with a KLH conjugated synthetic peptide between 121-150 amino acids from the C-terminal region of human NPW.

Dilution

WB~~1:1000

Format

Purified polyclonal antibody supplied in PBS with 0.09% (W/V) sodium azide. This antibody is purified through a protein A column, followed by peptide affinity purification.

Storage

Maintain refrigerated at 2-8°C for up to 2 weeks. For long term storage store at -20°C in small aliquots to prevent freeze-thaw cycles.

Precautions

NPW Antibody (C-term) is for research use only and not for use in diagnostic or therapeutic procedures.

NPW Antibody (C-term) - Protein Information

Name NPW

Synonyms PPL8, PPNPW

Function Plays a regulatory role in the organization of neuroendocrine signals accessing the anterior pituitary gland. Stimulates water drinking and food intake. May play a role in the hypothalamic response to stress (By similarity). NPW23 activates GPR7 and GPR8 more efficiently than NPW30.

Cellular Location

Secreted

Tissue Location

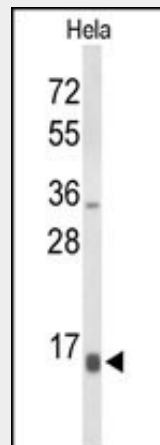
Detected in cerebrospinal fluid and urine (at protein level) (PubMed:25326458, PubMed:36213313, PubMed:37453717) Detected at high levels in the substantia nigra, fetal kidney and trachea; at lower levels in testis, uterus, ovary and placenta. Not detectable in many regions of the central nervous system. Also detected at high levels in lymphoblastic leukemia and colorectal adenocarcinoma

NPW Antibody (C-term) - Protocols

Provided below are standard protocols that you may find useful for product applications.

- [Western Blot](#)
- [Blocking Peptides](#)
- [Dot Blot](#)
- [Immunohistochemistry](#)
- [Immunofluorescence](#)
- [Immunoprecipitation](#)
- [Flow Cytometry](#)
- [Cell Culture](#)

NPW Antibody (C-term) - Images



Western blot analysis of NPW Antibody (C-term) (Cat. #AP9644b) in HeLa cell line lysates (35ug/lane). NPW (arrow) was detected using the purified Pab.

NPW Antibody (C-term) - Background

NPW is processed into 23- and 30-amino acid neuropeptides that bind and activate two G-protein coupled receptors in the central nervous system. The neuropeptides have been shown to enhance cortisol secretion from adrenal cells through the adenylate cyclase/protein kinase A signaling cascade. The preproprotein is translated using a non-AUG initiation codon that is inferred from analyses of the mouse ortholog. [provided by RefSeq].

NPW Antibody (C-term) - References

Luttrell, L.M. Mol. Biotechnol. 39(3):239-264(2008)

Singh, G., et al. Br. J. Pharmacol. 148(8):1033-1041(2006)