

**HSPB6 Antibody (Center)**  
**Affinity Purified Rabbit Polyclonal Antibody (Pab)**  
**Catalog # AP9629C**

**Specification**

---

**HSPB6 Antibody (Center) - Product Information**

Application	WB,E
Primary Accession	<a href="#">O14558</a>
Reactivity	Human, Mouse
Host	Rabbit
Clonality	Polyclonal
Isotype	Rabbit IgG
Calculated MW	17136
Antigen Region	91-120

**HSPB6 Antibody (Center) - Additional Information**

**Gene ID** 126393

**Other Names**

Heat shock protein beta-6, HspB6, Heat shock 20 kDa-like protein p20, HSPB6

**Target/Specificity**

This HSPB6 antibody is generated from rabbits immunized with a KLH conjugated synthetic peptide between 91-120 amino acids from the Central region of human HSPB6.

**Dilution**

WB~~1:1000

**Format**

Purified polyclonal antibody supplied in PBS with 0.09% (W/V) sodium azide. This antibody is purified through a protein A column, followed by peptide affinity purification.

**Storage**

Maintain refrigerated at 2-8°C for up to 2 weeks. For long term storage store at -20°C in small aliquots to prevent freeze-thaw cycles.

**Precautions**

HSPB6 Antibody (Center) is for research use only and not for use in diagnostic or therapeutic procedures.

**HSPB6 Antibody (Center) - Protein Information**

**Name** HSPB6

**Function** Small heat shock protein which functions as a molecular chaperone probably maintaining denatured proteins in a folding- competent state. Seems to have versatile functions in various biological processes. Plays a role in regulating muscle function such as smooth muscle

vasorelaxation and cardiac myocyte contractility. May regulate myocardial angiogenesis implicating KDR. Overexpression mediates cardioprotection and angiogenesis after induced damage. Stabilizes monomeric YWHAZ thereby supporting YWHAZ chaperone-like activity.

#### Cellular Location

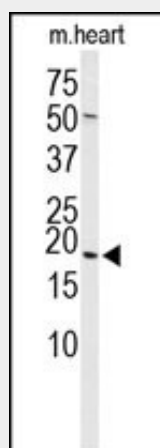
Cytoplasm. Nucleus. Secreted Note=Translocates to nuclear foci during heat shock

#### HSPB6 Antibody (Center) - Protocols

Provided below are standard protocols that you may find useful for product applications.

- [Western Blot](#)
- [Blocking Peptides](#)
- [Dot Blot](#)
- [Immunohistochemistry](#)
- [Immunofluorescence](#)
- [Immunoprecipitation](#)
- [Flow Cytometry](#)
- [Cell Culture](#)

#### HSPB6 Antibody (Center) - Images



Western blot analysis of HSPB6 Antibody (Center) (Cat. #AP9629c) in mouse heart tissue lysates (35ug/lane). HSPB6 (arrow) was detected using the purified Pab.

#### HSPB6 Antibody (Center) - Background

HSPB6 is associated with actin (see MIM 102540) and modulates smooth muscle relaxation (Tessier et al., 2003 [PubMed 12842460]).

#### HSPB6 Antibody (Center) - References

- Fuchs, M., et al. *Biochem. J.* 425(1):245-255(2010)  
Qian, J., et al. *Circ. Res.* 105(12):1223-1231(2009)  
Bagneris, C., et al. *J. Mol. Biol.* 392(5):1242-1252(2009)