

**TLE1 Antibody (Center)**  
**Affinity Purified Rabbit Polyclonal Antibody (Pab)**  
**Catalog # AP9614c**

**Specification**

---

**TLE1 Antibody (Center) - Product Information**

Application	WB,E
Primary Accession	<a href="#">Q04724</a>
Reactivity	Human
Host	Rabbit
Clonality	Polyclonal
Isotype	Rabbit IgG
Calculated MW	83201
Antigen Region	199-228

**TLE1 Antibody (Center) - Additional Information**

**Gene ID** 7088

**Other Names**

Transducin-like enhancer protein 1, E(Sp1) homolog, Enhancer of split groucho-like protein 1, ESG1, TLE1

**Target/Specificity**

This TLE1 antibody is generated from rabbits immunized with a KLH conjugated synthetic peptide between 199-228 amino acids from the Central region of human TLE1.

**Dilution**

WB~~1:1000

**Format**

Purified polyclonal antibody supplied in PBS with 0.09% (W/V) sodium azide. This antibody is purified through a protein A column, followed by peptide affinity purification.

**Storage**

Maintain refrigerated at 2-8°C for up to 2 weeks. For long term storage store at -20°C in small aliquots to prevent freeze-thaw cycles.

**Precautions**

TLE1 Antibody (Center) is for research use only and not for use in diagnostic or therapeutic procedures.

**TLE1 Antibody (Center) - Protein Information**

**Name** TLE1

**Function** Transcriptional corepressor that binds to a number of transcription factors. Inhibits NF-kappa-B-regulated gene expression. Inhibits the transcriptional activation mediated by FOXA2,

and by CTNNB1 and TCF family members in Wnt signaling. Enhances FOXG1/BF- 1- and HES1-mediated transcriptional repression (By similarity). The effects of full-length TLE family members may be modulated by association with dominant-negative AES. Unusual function as coactivator for ESRRG.

#### Cellular Location

Nucleus. Note=Nuclear and chromatin-associated, depending on isoforms and phosphorylation status. Hyperphosphorylation decreases the affinity for nuclear components

#### Tissue Location

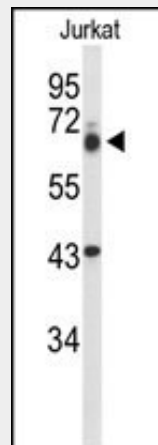
In all tissues examined, mostly in brain, liver and muscle

### TLE1 Antibody (Center) - Protocols

Provided below are standard protocols that you may find useful for product applications.

- [Western Blot](#)
- [Blocking Peptides](#)
- [Dot Blot](#)
- [Immunohistochemistry](#)
- [Immunofluorescence](#)
- [Immunoprecipitation](#)
- [Flow Cytometry](#)
- [Cell Culture](#)

### TLE1 Antibody (Center) - Images



Western blot analysis of TLE1 Antibody (Center) (Cat. #AP9614c) in Jurkat cell line lysates (35ug/lane). TLE1 (arrow) was detected using the purified Pab.

### TLE1 Antibody (Center) - Background

Transcriptional corepressor that binds to a number of transcription factors. Inhibits NF-kappa-B-regulated gene expression. Inhibits the transcriptional activation mediated by FOXA2, and by CTNNB1 and TCF family members in Wnt signaling. The effects of full-length TLE family members may be modulated by association with dominant-negative AES. Unusual function as coactivator for ESRRG.

### TLE1 Antibody (Center) - References

Ali, S.A., et al. Proc. Natl. Acad. Sci. U.S.A. 107(9):4165-4169(2010)  
Jagdis, A., et al. Am. J. Surg. Pathol. 33(12):1743-1751(2009)  
Kosemehmetoglu, K., et al. Mod. Pathol. 22(7):872-878(2009)