

NUPL2 Antibody (N-term)
Affinity Purified Rabbit Polyclonal Antibody (Pab)
Catalog # AP9566c

Specification

NUPL2 Antibody (N-term) - Product Information

Application	WB,E
Primary Accession	O15504
Reactivity	Human
Host	Rabbit
Clonality	Polyclonal
Isotype	Rabbit IgG
Calculated MW	44872
Antigen Region	88-115

NUPL2 Antibody (N-term) - Additional Information

Gene ID 11097

Other Names

Nucleoporin-like protein 2, NLP-1, NUP42 homolog, Nucleoporin hCG1, NUPL2, CG1

Target/Specificity

This NUPL2 antibody is generated from rabbits immunized with a KLH conjugated synthetic peptide between 88-115 amino acids from the N-terminal region of human NUPL2.

Dilution

WB~~1:1000

Format

Purified polyclonal antibody supplied in PBS with 0.09% (W/V) sodium azide. This antibody is purified through a protein A column, followed by peptide affinity purification.

Storage

Maintain refrigerated at 2-8°C for up to 2 weeks. For long term storage store at -20°C in small aliquots to prevent freeze-thaw cycles.

Precautions

NUPL2 Antibody (N-term) is for research use only and not for use in diagnostic or therapeutic procedures.

NUPL2 Antibody (N-term) - Protein Information

Name NUP42 ([HGNC:17010](#))

Synonyms CG1, NUPL2

Function Required for the export of mRNAs containing poly(A) tails from the nucleus into the

cytoplasm.

Cellular Location

Nucleus, nuclear pore complex. Nucleus membrane; Peripheral membrane protein; Cytoplasmic side. Note=Excluded from the nucleolus

Tissue Location

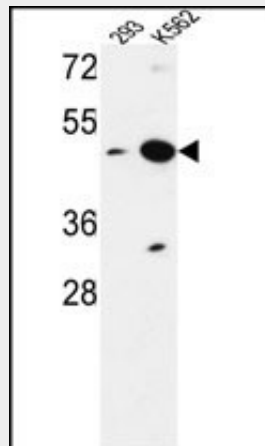
Ubiquitously expressed.

NUPL2 Antibody (N-term) - Protocols

Provided below are standard protocols that you may find useful for product applications.

- [Western Blot](#)
- [Blocking Peptides](#)
- [Dot Blot](#)
- [Immunohistochemistry](#)
- [Immunofluorescence](#)
- [Immunoprecipitation](#)
- [Flow Cytometry](#)
- [Cell Culture](#)

NUPL2 Antibody (N-term) - Images



NUPL2 Antibody (N-term) (Cat. #AP9566c) western blot analysis in 293, K562 cell line lysates (35ug/lane). This demonstrates the NUPL2 antibody detected the NUPL2 protein (arrow).

NUPL2 Antibody (N-term) - Background

Required for the export of mRNAs containing poly(A) tails from the nucleus into the cytoplasm. In case of infection by HIV-1, it may participate in the docking of viral Vpr at the nuclear envelope.

NUPL2 Antibody (N-term) - References

- ?Kendirgi, F., et al. Mol. Biol. Cell 16(9):4304-4315(2005)
- ?Sasaki, M., et al. Genomics 85(5):641-653(2005)
- ?Le Rouzic, E., et al. J. Biol. Chem. 277(47):45091-45098(2002)
- ?de Noronha, C.M., et al. Science 294(5544):1105-1108(2001)

NUPL2 Antibody (N-term) - Citations

- [Nesfatin-1 and nesfatin-1-like peptide suppress growth hormone synthesis via the](#)

[AC/PKA/CREB pathway in mammalian somatotrophs](#)