

SPRR1A Antibody (C-term)
Affinity Purified Rabbit Polyclonal Antibody (Pab)
Catalog # AP9563a

Specification

SPRR1A Antibody (C-term) - Product Information

Application	WB,E
Primary Accession	P35321
Reactivity	Human
Host	Rabbit
Clonality	Polyclonal
Isotype	Rabbit IgG
Calculated MW	9877
Antigen Region	61-89

SPRR1A Antibody (C-term) - Additional Information

Gene ID 6698

Other Names

Cornifin-A, 19 kDa pancornulin, SPRK, Small proline-rich protein IA, SPR-IA, SPRR1A

Target/Specificity

This SPRR1A antibody is generated from rabbits immunized with a KLH conjugated synthetic peptide between 61-89 amino acids from the C-terminal region of human SPRR1A.

Dilution

WB~~1:1000

Format

Purified polyclonal antibody supplied in PBS with 0.09% (W/V) sodium azide. This antibody is purified through a protein A column, followed by peptide affinity purification.

Storage

Maintain refrigerated at 2-8°C for up to 2 weeks. For long term storage store at -20°C in small aliquots to prevent freeze-thaw cycles.

Precautions

SPRR1A Antibody (C-term) is for research use only and not for use in diagnostic or therapeutic procedures.

SPRR1A Antibody (C-term) - Protein Information

Name SPRR1A

Function Cross-linked envelope protein of keratinocytes. It is a keratinocyte protein that first appears in the cell cytosol, but ultimately becomes cross-linked to membrane proteins by transglutaminase. All that results in the formation of an insoluble envelope beneath the plasma

membrane.

Cellular Location

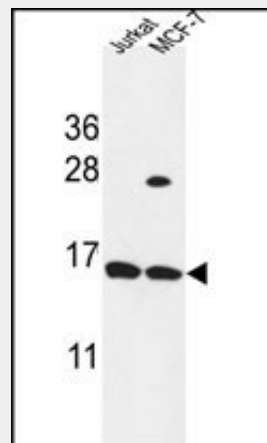
Cytoplasm.

SPRR1A Antibody (C-term) - Protocols

Provided below are standard protocols that you may find useful for product applications.

- [Western Blot](#)
- [Blocking Peptides](#)
- [Dot Blot](#)
- [Immunohistochemistry](#)
- [Immunofluorescence](#)
- [Immunoprecipitation](#)
- [Flow Cytometry](#)
- [Cell Culture](#)

SPRR1A Antibody (C-term) - Images



SPRR1A Antibody (C-term) (Cat. #AP9563a) western blot analysis in Jurkat, MCF-7 cell line lysates (35ug/lane). This demonstrates the SPRR1A antibody detected the SPRR1A protein (arrow).

SPRR1A Antibody (C-term) - Background

Cross-linked envelope protein of keratinocytes. It is a keratinocyte protein that first appears in the cell cytosol, but ultimately becomes cross-linked to membrane proteins by transglutaminase. All that results in the formation of an insoluble envelope beneath the plasma membrane.

SPRR1A Antibody (C-term) - References

- ?Jarzab, J., et al. *Int. Arch. Allergy Immunol.* 151(1):28-37(2010)
- ?Stemmler, S., et al. *Int. J. Immunogenet.* 36(4):217-222(2009)
- ?Kainu, K., et al. *Exp. Dermatol.* 18(2):109-115(2009)
- ?Bonilla, I.E., et al. *J. Neurosci.* 22(4):1303-1315(2002)