

**SGIP1 Antibody (N-term)**  
**Affinity Purified Rabbit Polyclonal Antibody (Pab)**  
**Catalog # AP9556b**

**Specification**

---

**SGIP1 Antibody (N-term) - Product Information**

Application	WB,E
Primary Accession	<a href="#">O9BQI5</a>
Other Accession	<a href="#">P0DJJ3</a> , <a href="#">Q8VD37</a>
Reactivity	Human, Mouse
Predicted	Rat
Host	Rabbit
Clonality	Polyclonal
Isotype	Rabbit IgG
Calculated MW	89109
Antigen Region	1-30

**SGIP1 Antibody (N-term) - Additional Information**

**Gene ID** 84251

**Other Names**

SH3-containing GRB2-like protein 3-interacting protein 1, Endophilin-3-interacting protein, SGIP1

**Target/Specificity**

This SGIP1 antibody is generated from rabbits immunized with a KLH conjugated synthetic peptide between 1-30 amino acids from the N-terminal region of human SGIP1.

**Dilution**

WB~~1:1000

**Format**

Purified polyclonal antibody supplied in PBS with 0.09% (W/V) sodium azide. This antibody is purified through a protein A column, followed by peptide affinity purification.

**Storage**

Maintain refrigerated at 2-8°C for up to 2 weeks. For long term storage store at -20°C in small aliquots to prevent freeze-thaw cycles.

**Precautions**

SGIP1 Antibody (N-term) is for research use only and not for use in diagnostic or therapeutic procedures.

**SGIP1 Antibody (N-term) - Protein Information**

**Name** SGIP1

**Function** May function in clathrin-mediated endocytosis. Has both a membrane binding/tubulating

activity and the ability to recruit proteins essential to the formation of functional clathrin-coated pits. Has a preference for membranes enriched in phosphatidylserine and phosphoinositides and is required for the endocytosis of the transferrin receptor. May also bind tubulin. May play a role in the regulation of energy homeostasis.

#### Cellular Location

Membrane, clathrin-coated pit; Peripheral membrane protein; Cytoplasmic side

#### Tissue Location

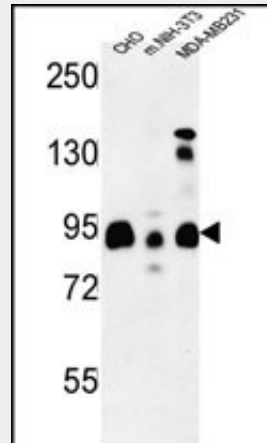
Specifically expressed in brain.

### SGIP1 Antibody (N-term) - Protocols

Provided below are standard protocols that you may find useful for product applications.

- [Western Blot](#)
- [Blocking Peptides](#)
- [Dot Blot](#)
- [Immunohistochemistry](#)
- [Immunofluorescence](#)
- [Immunoprecipitation](#)
- [Flow Cytometry](#)
- [Cell Culture](#)

### SGIP1 Antibody (N-term) - Images



SGIP1 Antibody (N-term) (Cat. #AP9556b) western blot analysis in CHO,MDA-MB231, mouse NIH-3T3 cell line lysates (35ug/lane).This demonstrates the SGIP1 antibody detected the SGIP1 protein (arrow).

### SGIP1 Antibody (N-term) - Background

SGIP1 functions as an endocytic protein that affects signaling by receptors in neuronal systems involved in energy homeostasis via its interaction with endophilins (see SH3GL3; MIM 603362) (Trevaskis et al., 2005 [PubMed 15919751] and Uezu et al., 2007 [PubMed 17626015]).

### SGIP1 Antibody (N-term) - References

Luke, M.M., et al. Stroke 40(2):363-368(2009)  
Shiffman, D., et al. Arterioscler. Thromb. Vasc. Biol. 28(1):173-179(2008)

Uezu, A., et al. J. Biol. Chem. 282(36):26481-26489(2007)  
Trevaskis, J., et al. Endocrinology 146(9):3757-3764(2005)  
Simpson, J.C., et al. EMBO Rep. 1(3):287-292(2000)