

**GPR160 Antibody (C-term)**  
**Affinity Purified Rabbit Polyclonal Antibody (Pab)**  
**Catalog # AP9500b**

**Specification**

---

**GPR160 Antibody (C-term) - Product Information**

|                   |                        |
|-------------------|------------------------|
| Application       | WB,E                   |
| Primary Accession | <a href="#">O9UJ42</a> |
| Reactivity        | Human, Mouse           |
| Host              | Rabbit                 |
| Clonality         | Polyclonal             |
| Isotype           | Rabbit IgG             |
| Calculated MW     | 39787                  |
| Antigen Region    | 305-332                |

**GPR160 Antibody (C-term) - Additional Information**

**Gene ID** 26996

**Other Names**

Probable G-protein coupled receptor 160, G-protein coupled receptor GPCR1, hGPCR1, GPR160, GPCR150

**Target/Specificity**

This GPR160 antibody is generated from rabbits immunized with a KLH conjugated synthetic peptide between 305-332 amino acids from the C-terminal region of human GPR160.

**Dilution**

WB~~1:1000

**Format**

Purified polyclonal antibody supplied in PBS with 0.09% (W/V) sodium azide. This antibody is purified through a protein A column, followed by peptide affinity purification.

**Storage**

Maintain refrigerated at 2-8°C for up to 2 weeks. For long term storage store at -20°C in small aliquots to prevent freeze-thaw cycles.

**Precautions**

GPR160 Antibody (C-term) is for research use only and not for use in diagnostic or therapeutic procedures.

**GPR160 Antibody (C-term) - Protein Information**

**Name** GPR160

**Synonyms** GPCR150

**Function** Orphan receptor.

**Cellular Location**

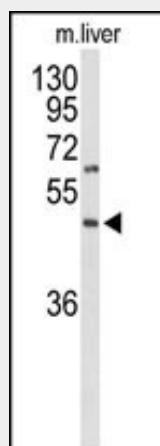
Cell membrane; Multi-pass membrane protein.

**GPR160 Antibody (C-term) - Protocols**

Provided below are standard protocols that you may find useful for product applications.

- [Western Blot](#)
- [Blocking Peptides](#)
- [Dot Blot](#)
- [Immunohistochemistry](#)
- [Immunofluorescence](#)
- [Immunoprecipitation](#)
- [Flow Cytometry](#)
- [Cell Culture](#)

**GPR160 Antibody (C-term) - Images**



Western blot analysis of GPR160 Antibody (C-term) (Cat. #AP9500b) in mouse liver tissue lysates (35ug/lane). GPR160 (arrow) was detected using the purified Pab.

**GPR160 Antibody (C-term) - Background**

GPR160 is an orphan receptor.

**GPR160 Antibody (C-term) - References**

- Yoshida, T., et al. Int. J. Mol. Med. 25(4):649-656(2010)  
Oguri, M., et al. Am. J. Hypertens. 23(1):70-77(2010)