

**Collagen IV Rabbit pAb**  
**Collagen IV Rabbit pAb**  
**Catalog # AP94831**

**Specification**

---

**Collagen IV Rabbit pAb - Product Information**

Application	<b>WB, IHC-P, IHC-F, IF, E</b>
Primary Accession	<a href="#">P02463</a>
Reactivity	<b>Rat, Human</b>
Host	<b>Rabbit</b>
Clonality	<b>Polyclonal</b>
Calculated MW	<b>160679</b>

**Collagen IV Rabbit pAb - Additional Information**

**Gene ID** 12826

**Other Names**

Collagen alpha-1(IV) chain, Arresten, Col4a1 {ECO:0000312|MGI:MGI:88454}

**Format**

0.01M TBS(pH7.4), 0.09% (W/V) sodium azide and 50% Glyce

**Storage**

Store at -20 °C for one year. Avoid repeated freeze/thaw cycles. When reconstituted in sterile pH 7.4 0.01M PBS or diluent of antibody the antibody is stable for at least two weeks at 2-4 °C.

**Collagen IV Rabbit pAb - Protein Information**

**Name** Col4a1 {ECO:0000312|MGI:MGI:88454}

**Function**

Type IV collagen is the major structural component of glomerular basement membranes (GBM), forming a 'chicken-wire' meshwork together with laminins, proteoglycans and entactin/nidogen.

**Cellular Location**

Secreted, extracellular space, extracellular matrix, basement membrane

**Tissue Location**

Detected in the basement membrane of the cornea (at protein level).

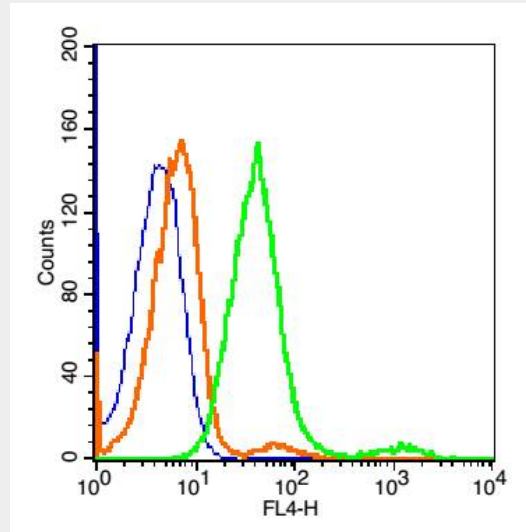
**Collagen IV Rabbit pAb - Protocols**

Provided below are standard protocols that you may find useful for product applications.

- [Western Blot](#)

- [Blocking Peptides](#)
- [Dot Blot](#)
- [Immunohistochemistry](#)
- [Immunofluorescence](#)
- [Immunoprecipitation](#)
- [Flow Cytometry](#)
- [Cell Culture](#)

### Collagen IV Rabbit pAb - Images



Blank control: Hepg2 Cells(blue). Primary Antibody: Rabbit Anti-Collagen IV/AF647 Conjugated antibody (AP94831), Dilution: 1  $\mu$ g in 100  $\mu$ L 1X PBS containing 0.5% BSA; Isotype Control Antibody: Rabbit IgG/AF647(orange), used under the same conditions.

### Collagen IV Rabbit pAb - Background

This product as supplied is intended for research use only, not for use in human, therapeutic or diagnostic applications.