

**BRS3 Antibody (Center)**  
**Affinity Purified Rabbit Polyclonal Antibody (Pab)**  
**Catalog # AP9474C**

**Specification**

---

**BRS3 Antibody (Center) - Product Information**

Application	WB,E
Primary Accession	<a href="#">P32247</a>
Other Accession	<a href="#">O8K418</a> , <a href="#">O54798</a>
Reactivity	Human, Mouse
Predicted	Rat
Host	Rabbit
Clonality	Polyclonal
Isotype	Rabbit IgG
Calculated MW	44411
Antigen Region	239-268

**BRS3 Antibody (Center) - Additional Information**

**Gene ID** 680

**Other Names**

Bombesin receptor subtype-3, BRS-3, BRS3

**Target/Specificity**

This BRS3 antibody is generated from rabbits immunized with a KLH conjugated synthetic peptide between 239-268 amino acids from the Central region of human BRS3.

**Dilution**

WB~~1:1000

**Format**

Purified polyclonal antibody supplied in PBS with 0.09% (W/V) sodium azide. This antibody is purified through a protein A column, followed by peptide affinity purification.

**Storage**

Maintain refrigerated at 2-8°C for up to 2 weeks. For long term storage store at -20°C in small aliquots to prevent freeze-thaw cycles.

**Precautions**

BRS3 Antibody (Center) is for research use only and not for use in diagnostic or therapeutic procedures.

**BRS3 Antibody (Center) - Protein Information**

**Name** BRS3

**Function** Role in sperm cell division, maturation, or function. This receptor mediates its action by

association with G proteins that activate a phosphatidylinositol-calcium second messenger system.

#### Cellular Location

Cell membrane; Multi-pass membrane protein.

#### Tissue Location

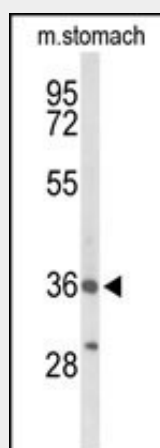
In germ cells in testis. Lung carcinoma cells.

### BRS3 Antibody (Center) - Protocols

Provided below are standard protocols that you may find useful for product applications.

- [Western Blot](#)
- [Blocking Peptides](#)
- [Dot Blot](#)
- [Immunohistochemistry](#)
- [Immunofluorescence](#)
- [Immunoprecipitation](#)
- [Flow Cytometry](#)
- [Cell Culture](#)

### BRS3 Antibody (Center) - Images



Western blot analysis of BRS3 Antibody (Center) (Cat. #AP9474c) in mouse stomach tissue lysates (35ug/lane). BRS3 (arrow) was detected using the purified Pab.

### BRS3 Antibody (Center) - Background

Mammalian bombesin-like peptides (see MIM 137260) are widely distributed in the central nervous system as well as in the gastrointestinal tract, where they modulate smooth-muscle contraction, exocrine and endocrine processes, metabolism, and behavior. They bind to G protein-coupled receptors on the cell surface to elicit their effects. Bombesin-like peptide receptors include gastrin-releasing peptide receptor (MIM 305670), neuromedin B receptor (MIM 162341), and bombesin-like receptor-3 (BRS3) (Ohki-Hamazaki et al., 1997).

### BRS3 Antibody (Center) - References

- ?Wang, Y., et al. Cell Biol. Int. 31(12):1495-1500(2007)
- ?Tan, Y.R., et al. Biochem. J. 405(1):131-137(2007)
- ?Hou, X., et al. Lung Cancer 54(2):143-148(2006)

?Ross, M.T., et al. Nature 434(7031):325-337(2005)

?Liu, J., et al. Biochemistry 41(28):8954-8960(2002)