

**CARD9 Mouse mAb**  
CARD9 Mouse mAb  
Catalog # AP94713

## Specification

---

### CARD9 Mouse mAb - Product Information

Application	<b>WB</b>
Reactivity	<b>Human</b>
Host	<b>Rabbit</b>
Clonality	<b>Monoclonal</b>

### CARD9 Mouse mAb - Additional Information

#### Format

0.01M TBS(pH7.4), 0.09% (W/V) sodium azide and 50% Glyce

#### Storage

Store at -20 °C for one year. Avoid repeated freeze/thaw cycles. When reconstituted in sterile pH 7.4 0.01M PBS or diluent of antibody the antibody is stable for at least two weeks at 2-4 °C.

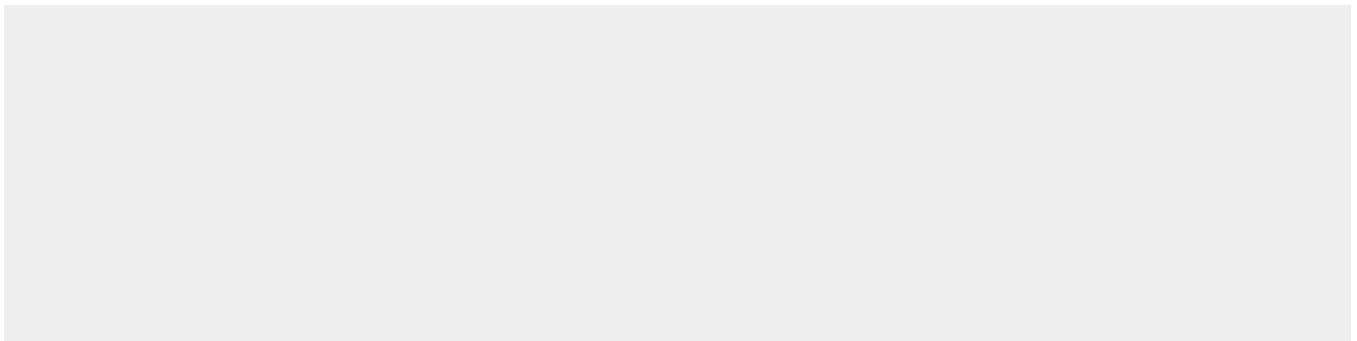
### CARD9 Mouse mAb - Protein Information

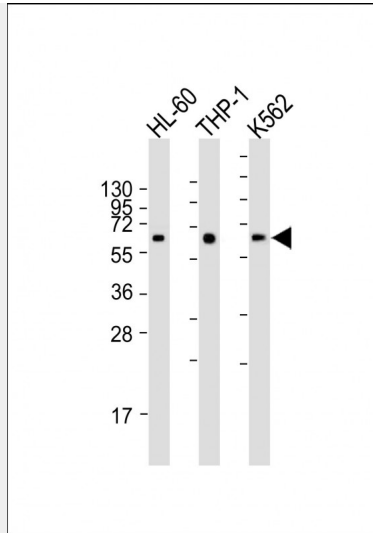
### CARD9 Mouse mAb - Protocols

Provided below are standard protocols that you may find useful for product applications.

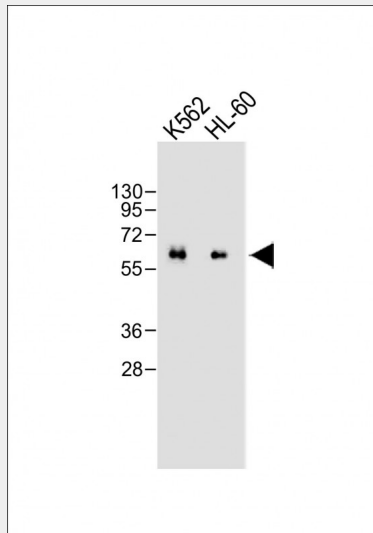
- [Western Blot](#)
- [Blocking Peptides](#)
- [Dot Blot](#)
- [Immunohistochemistry](#)
- [Immunofluorescence](#)
- [Immunoprecipitation](#)
- [Flow Cytometry](#)
- [Cell Culture](#)

### CARD9 Mouse mAb - Images





Sample: Lane 1: HL-60 cell lysates Lane 2: THP-1 cell lysates Lane 3: K562 cell lysates Primary: Anti-CARD9 (AP94713) at 1/2000 dilution Secondary: IRDye800CW Goat Anti-Mouse IgG at 1/20000 dilution Predicted band size: 62 kD Observed band size: 62 kD



Sample: Lane 1: K562 cell lysates Lane 2: HL-60 cell lysates Primary: Anti-CARD9 (AP94713) at 1/2000 dilution Secondary: IRDye800CW Goat Anti-Mouse IgG at 1/20000 dilution Predicted band size: 62 kD Observed band size: 62 kD

### **CARD9 Mouse mAb - Background**

This product as supplied is intended for research use only, not for use in human, therapeutic or diagnostic applications.