

**Lpin1 protein Rabbit pAb**  
**Lpin1 protein Rabbit pAb**  
**Catalog # AP94700**

## Specification

---

### Lpin1 protein Rabbit pAb - Product Information

Application	IHC-P
Primary Accession	<a href="#">O91ZP3</a>
Reactivity	Mouse
Host	Rabbit
Clonality	Polyclonal
Calculated MW	102002

### Lpin1 protein Rabbit pAb - Additional Information

**Gene ID** 14245

#### Other Names

Phosphatidate phosphatase LPIN1, 3.1.3.4, Fatty liver dystrophy protein, Lipin-1, Lpin1, Flde {ECO:0000303|PubMed:11138012}

#### Format

0.01M TBS(pH7.4), 0.09% (W/V) sodium azide and 50% Glyce

#### Storage

Store at -20 °C for one year. Avoid repeated freeze/thaw cycles. When reconstituted in sterile pH 7.4 0.01M PBS or diluent of antibody the antibody is stable for at least two weeks at 2-4 °C.

### Lpin1 protein Rabbit pAb - Protein Information

**Name** Lpin1

**Synonyms** Flde {ECO:0000303|PubMed:11138012}

#### Function

Acts as a magnesium-dependent phosphatidate phosphatase enzyme which catalyzes the conversion of phosphatidic acid to diacylglycerol during triglyceride, phosphatidylcholine and phosphatidylethanolamine biosynthesis and therefore controls the metabolism of fatty acids at different levels (PubMed:<a href="http://www.uniprot.org/citations/17158099" target="\_blank">17158099</a>). Is involved in adipocyte differentiation (PubMed:<a href="http://www.uniprot.org/citations/16049017" target="\_blank">16049017</a>). Acts also as nuclear transcriptional coactivator for PPARGC1A/PPARA regulatory pathway to modulate lipid metabolism gene expression (PubMed:<a href="http://www.uniprot.org/citations/16950137" target="\_blank">16950137</a>).

#### Cellular Location

[Isoform 1]: Mitochondrion outer membrane. Cytoplasm. Nucleus membrane. Note=Recruited at the mitochondrion outer membrane following phosphatidic acid formation mediated by PLD6 In

neuronal cells, isoform 1 is exclusively cytoplasmic (PubMed:21397848). In 3T3-L1 pre-adipocytes, it primarily located in the cytoplasm (PubMed:16049017).

#### Tissue Location

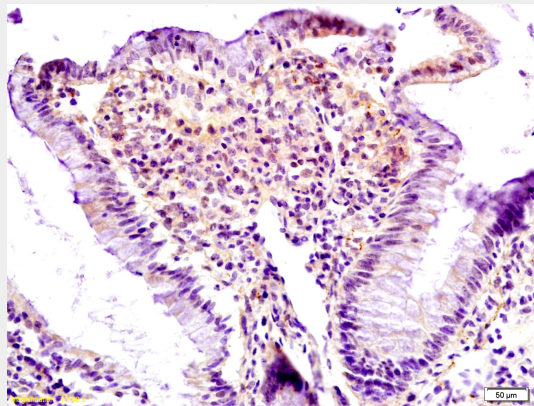
Specifically expressed in skeletal muscle. Also expressed prominently in adipose tissue, and testis. Lower expression also detected in kidney, lung, brain and liver [Isoform 2]: Predominant isoform in the brain.

#### Lpin1 protein Rabbit pAb - Protocols

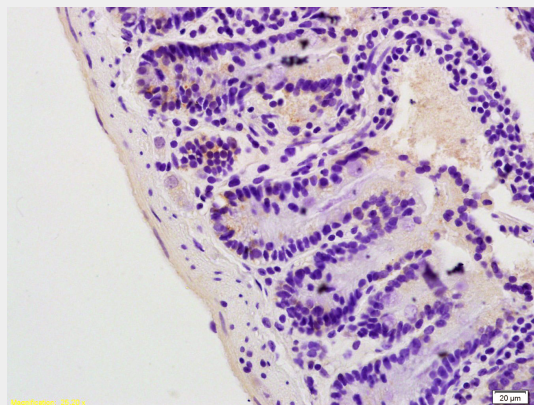
Provided below are standard protocols that you may find useful for product applications.

- [Western Blot](#)
- [Blocking Peptides](#)
- [Dot Blot](#)
- [Immunohistochemistry](#)
- [Immunofluorescence](#)
- [Immunoprecipitation](#)
- [Flow Cytometry](#)
- [Cell Culture](#)

#### Lpin1 protein Rabbit pAb - Images



Tissue/cell: rat colon tissue; 4% Paraformaldehyde-fixed and paraffin-embedded; Antigen retrieval: citrate buffer ( 0.01M, pH 6.0 ), Boiling bathing for 15min; Block endogenous peroxidase by 3% Hydrogen peroxide for 30min; Blocking buffer (normal goat serum,C-0005) at 37°C for 20 min; Incubation: Anti-Lpin1 Polyclonal Antibody, Unconjugated(AP94700) 1:200, overnight at 4°C, followed by conjugation to the secondary antibody(SP-0023) and DAB(C-0010) staining



Tissue/cell: mouse colon tissue; 4% Paraformaldehyde-fixed and paraffin-embedded; Antigen retrieval: citrate buffer ( 0.01M, pH 6.0 ), Boiling bathing for 15min; Block endogenous peroxidase by 3% Hydrogen peroxide for 30min; Blocking buffer (normal goat serum,C-0005) at 37°C for 20 min; Incubation: Anti-Lpin1 Polyclonal Antibody, Unconjugated(AP94700) 1:200, overnight at 4°C, followed by conjugation to the secondary antibody(SP-0023) and DAB(C-0010) staining

**Lpin1 protein Rabbit pAb - Background**

This product as supplied is intended for research use only, not for use in human, therapeutic or diagnostic applications.