

**PI3-kinase p110 subunit beta Recombinant Rabbit mAb**  
**PI3-kinase p110 subunit beta Recombinant Rabbit mAb**  
**Catalog # AP94694**

**Specification**

---

**PI3-kinase p110 subunit beta Recombinant Rabbit mAb - Product Information**

Application	<b>WB, IHC-P</b>
Primary Accession	<a href="#">Q24JU2</a>
Reactivity	<b>Human</b>
Host	<b>Rabbit</b>
Clonality	<b>Recombinant</b>

**PI3-kinase p110 subunit beta Recombinant Rabbit mAb - Additional Information**

**Format**

0.01M TBS(pH7.4), 0.09% (W/V) sodium azide and 50% Glyce

**Storage**

Store at -20 °C for one year. Avoid repeated freeze/thaw cycles. When reconstituted in sterile pH 7.4 0.01M PBS or diluent of antibody the antibody is stable for at least two weeks at 2-4 °C.

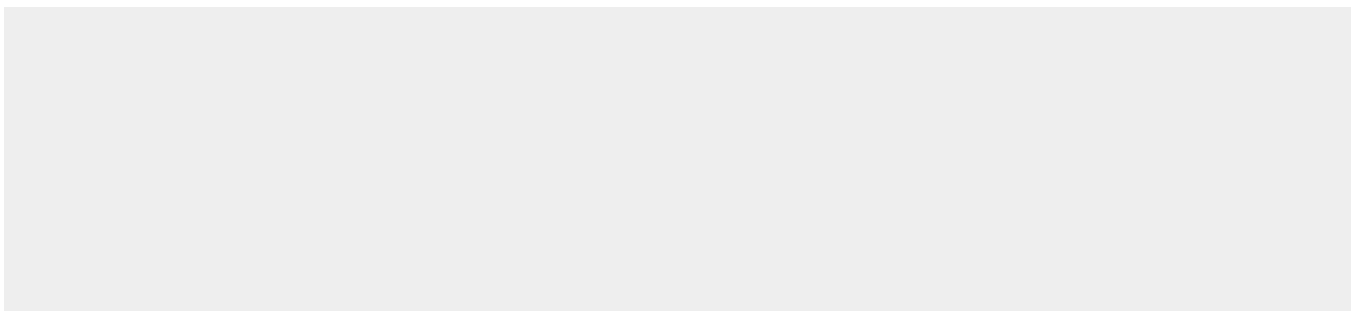
**PI3-kinase p110 subunit beta Recombinant Rabbit mAb - Protein Information**

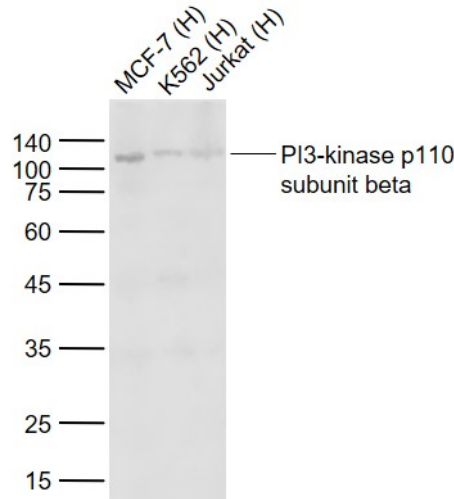
**PI3-kinase p110 subunit beta Recombinant Rabbit mAb - Protocols**

Provided below are standard protocols that you may find useful for product applications.

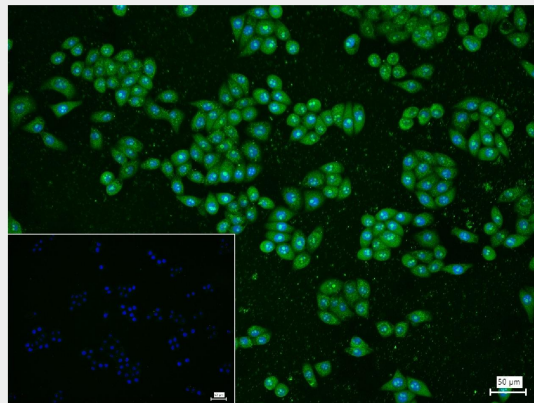
- [Western Blot](#)
- [Blocking Peptides](#)
- [Dot Blot](#)
- [Immunohistochemistry](#)
- [Immunofluorescence](#)
- [Immunoprecipitation](#)
- [Flow Cytometry](#)
- [Cell Culture](#)

**PI3-kinase p110 subunit beta Recombinant Rabbit mAb - Images**

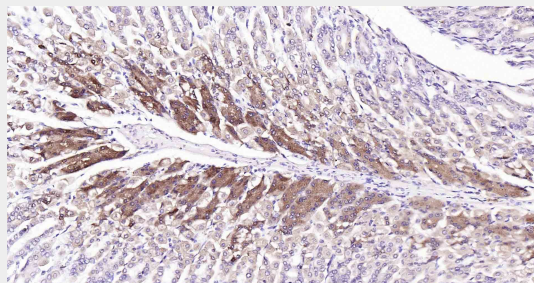




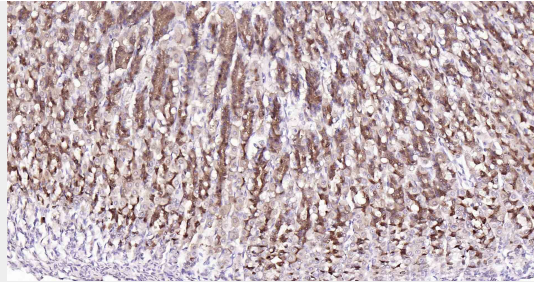
Sample: Lane 1: Human MCF-7 cell lysates Lane 2: Human K562 cell lysates Lane 3: Human Jurkat cell lysates Primary: Anti-PI3-kinase p110 subunit beta (AP94694) at 1/1000 dilution Secondary: IRDye800CW Goat Anti-Rabbit IgG at 1/20000 dilution Predicted band size: 123 kD Observed band size: 110 kD



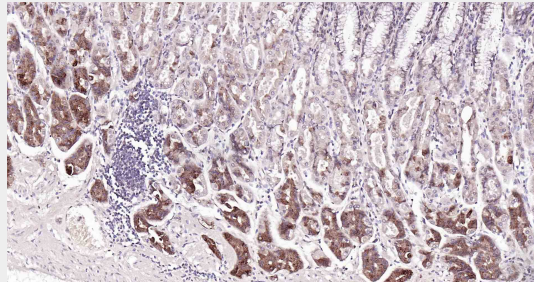
4% Paraformaldehyde-fixed MCF-7 (H) cell; Triton X-100 at r.t. for 20 min; Antibody incubation with (PI3-kinase p110 subunit beta) monoclonal Antibody, unconjugated (AP94694) 1:200, 90 min at 37°C; followed by conjugated Goat Anti-Rabbit IgG antibody (green, bs-0295G-FITC) at 37°C for 90 min, DAPI (blue, C02-04002) was used to stain the cell nuclei. PBS instead of the primary antibody was used as the blank control.



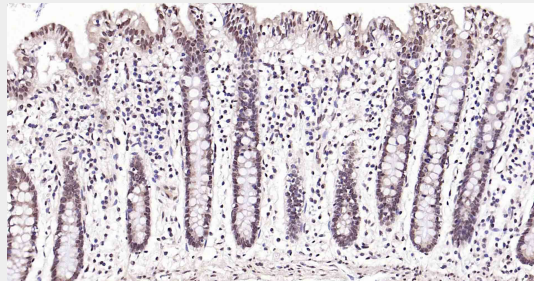
Paraformaldehyde-fixed, paraffin embedded Mouse Stomach; Antigen retrieval by boiling in sodium citrate buffer (pH6.0) for 15 min; Antibody incubation with PI3-kinase p110 subunit beta Monoclonal Antibody, Unconjugated(AP94694) at 1:100 overnight at 4°C, followed by conjugation to the SP Kit (Rabbit, SP-0023) and DAB (C-0010) staining.



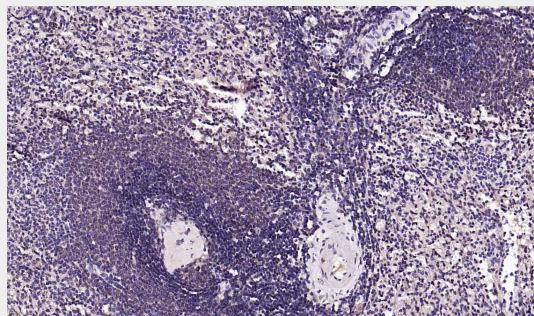
Paraformaldehyde-fixed, paraffin embedded Rat Stomach; Antigen retrieval by boiling in sodium citrate buffer (pH6.0) for 15 min; Antibody incubation with PI3-kinase p110 subunit beta Monoclonal Antibody, Unconjugated(AP94694) at 1:100 overnight at 4°C, followed by conjugation to the SP Kit (Rabbit, SP-0023) and DAB (C-0010) staining.



Paraformaldehyde-fixed, paraffin embedded Human Fundus; Antigen retrieval by boiling in sodium citrate buffer (pH6.0) for 15 min; Antibody incubation with PI3-kinase p110 subunit beta Monoclonal Antibody, Unconjugated(AP94694) at 1:100 overnight at 4°C, followed by conjugation to the SP Kit (Rabbit, SP-0023) and DAB (C-0010) staining.



Paraformaldehyde-fixed, paraffin embedded Human Colon; Antigen retrieval by boiling in sodium citrate buffer (pH6.0) for 15 min; Antibody incubation with PI3-kinase p110 subunit beta Monoclonal Antibody, Unconjugated(AP94694) at 1:100 overnight at 4°C, followed by conjugation to the SP Kit (Rabbit, SP-0023) and DAB (C-0010) staining.



Paraformaldehyde-fixed, paraffin embedded Human Spleen; Antigen retrieval by boiling in sodium citrate buffer (pH6.0) for 15 min; Antibody incubation with PI3-kinase p110 subunit beta Monoclonal Antibody, Unconjugated(AP94694) at 1:100 overnight at 4°C, followed by conjugation

to the SP Kit (Rabbit, SP-0023) and DAB (C-0010) staining.

**PI3-kinase p110 subunit beta Recombinant Rabbit mAb - Background**

This product as supplied is intended for research use only, not for use in human, therapeutic or diagnostic applications.