

NPY2R Antibody (N-term)
Affinity Purified Rabbit Polyclonal Antibody (Pab)
Catalog # AP9466a

Specification

NPY2R Antibody (N-term) - Product Information

Application	WB,E
Primary Accession	P49146
Other Accession	P97295
Reactivity	Human, Mouse
Host	Rabbit
Clonality	Polyclonal
Isotype	Rabbit IgG
Antigen Region	19-45

NPY2R Antibody (N-term) - Additional Information

Gene ID 4887

Other Names

Neuropeptide Y receptor type 2, NPY2-R, NPY-Y2 receptor, Y2 receptor, NPY2R

Target/Specificity

This NPY2R antibody is generated from rabbits immunized with a KLH conjugated synthetic peptide between 19-45 amino acids from the N-terminal region of human NPY2R.

Dilution

WB~~1:1000

Format

Purified polyclonal antibody supplied in PBS with 0.09% (W/V) sodium azide. This antibody is purified through a protein A column, followed by peptide affinity purification.

Storage

Maintain refrigerated at 2-8°C for up to 2 weeks. For long term storage store at -20°C in small aliquots to prevent freeze-thaw cycles.

Precautions

NPY2R Antibody (N-term) is for research use only and not for use in diagnostic or therapeutic procedures.

NPY2R Antibody (N-term) - Protein Information

Name NPY2R

Function Receptor for neuropeptide Y and peptide YY. The rank order of affinity of this receptor for pancreatic polypeptides is PYY > NPY > PYY (3-36) > NPY (2-36) > [Ile-31, Gln-34] PP > [Leu-31, Pro-34] NPY > PP, [Pro-34] PYY and NPY free acid.

Cellular Location

Cell membrane; Multi-pass membrane protein.

Tissue Location

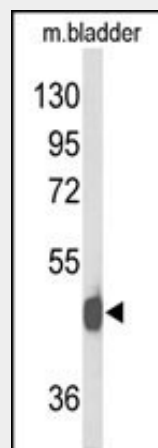
High levels in amygdala, corpus callosum, hippocampus and subthalamic nucleus. Also detectable in caudate nucleus, hypothalamus and substantia nigra

NPY2R Antibody (N-term) - Protocols

Provided below are standard protocols that you may find useful for product applications.

- [Western Blot](#)
- [Blocking Peptides](#)
- [Dot Blot](#)
- [Immunohistochemistry](#)
- [Immunofluorescence](#)
- [Immunoprecipitation](#)
- [Flow Cytometry](#)
- [Cell Culture](#)

NPY2R Antibody (N-term) - Images



Western blot analysis of NPY2R Antibody (N-term) (Cat. #AP9466a) in mouse bladder tissue lysates (35ug/lane). NPY2R (arrow) was detected using the purified Pab.

NPY2R Antibody (N-term) - Background

Receptor for neuropeptide Y and peptide YY. The rank order of affinity of this receptor for pancreatic polypeptides is PYY > NPY > PYY (3-36) > NPY (2-36) > [Ile-31, Gln-34] PP > [Leu-31, Pro-34] NPY > PP, [Pro-34] PYY and NPY free acid.

NPY2R Antibody (N-term) - References

- ?Shoblock, J.R., et al. Psychopharmacology (Berl.) 208(2):265-277(2010)
- ?Arnett, D.K., et al. J. Hypertens. 27(8):1585-1593(2009)
- ?Zhang, J., et al. Zhonghua Liu Xing Bing Xue Za Zhi 30(7):695-698(2009)