

DBC1 Antibody (N-term)
Affinity Purified Rabbit Polyclonal Antibody (Pab)
Catalog # AP9464a

Specification

DBC1 Antibody (N-term) - Product Information

Application	WB,E
Primary Accession	O60477
Other Accession	O925T8 , O920P3 , Q7ZZR3 , Q5E9L2
Reactivity	Human, Mouse
Predicted	Bovine, Chicken, Rat
Host	Rabbit
Clonality	Polyclonal
Isotype	Rabbit IgG
Calculated MW	88760
Antigen Region	85-111

DBC1 Antibody (N-term) - Additional Information

Gene ID 1620

Other Names

BMP/retinoic acid-inducible neural-specific protein 1, Deleted in bladder cancer protein 1, BRINP1, DBC1, DBCCR1, FAM5A

Target/Specificity

This DBC1 antibody is generated from rabbits immunized with a KLH conjugated synthetic peptide between 85-111 amino acids from the N-terminal region of human DBC1.

Dilution

WB~~1:1000

Format

Purified polyclonal antibody supplied in PBS with 0.09% (W/V) sodium azide. This antibody is purified through a protein A column, followed by peptide affinity purification.

Storage

Maintain refrigerated at 2-8°C for up to 2 weeks. For long term storage store at -20°C in small aliquots to prevent freeze-thaw cycles.

Precautions

DBC1 Antibody (N-term) is for research use only and not for use in diagnostic or therapeutic procedures.

DBC1 Antibody (N-term) - Protein Information

Name BRINP1

Synonyms DBC1, DBCCR1, FAM5A

Function Plays a role in neurogenesis and brain development (By similarity). May suppress cell cycle progression in postmitotic neurons by inhibiting G1/S transition (PubMed:[11420708](#)).

Cellular Location

Cytoplasm

Tissue Location

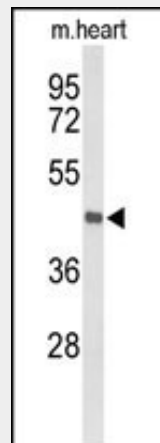
Highly expressed in brain. Weakly expressed in heart, lung, skeletal muscle, kidney, thymus, prostate, testis and small intestine.

DBC1 Antibody (N-term) - Protocols

Provided below are standard protocols that you may find useful for product applications.

- [Western Blot](#)
- [Blocking Peptides](#)
- [Dot Blot](#)
- [Immunohistochemistry](#)
- [Immunofluorescence](#)
- [Immunoprecipitation](#)
- [Flow Cytometry](#)
- [Cell Culture](#)

DBC1 Antibody (N-term) - Images



Western blot analysis of DBC1 Antibody (N-term) (Cat. #AP9464a) in mouse heart tissue lysates (35ug/lane). DBC1 (arrow) was detected using the purified Pab.

DBC1 Antibody (N-term) - Background

DBC1 is located within a chromosomal region that shows loss of heterozygosity in some bladder cancers. It contains a 5' CpG island that may be a frequent target of hypermethylation, and it may undergo hypermethylation-based silencing in some bladder cancers.

DBC1 Antibody (N-term) - References

Koyama, S., et al. Biochem. Biophys. Res. Commun. 392(3):357-362(2010)
Gronbaek, K., et al. Mod. Pathol. 21(5):632-638(2008)

Louhelainen, J.P., et al. *Oncogene* 25(16):2409-2419(2006)
Izumi, H., et al. *Hum. Mol. Genet.* 14(8):997-1007(2005)
Beetz, C., et al. *Oncol. Rep.* 13(2):335-340(2005)
Nishiyama, H., et al. *Oncogene* 20(23):2956-2964(2001)