

Mafa Rabbit pAb
Mafa Rabbit pAb
Catalog # AP94622

Specification

Mafa Rabbit pAb - Product Information

Application	IHC-P, WB
Primary Accession	Q8CF90
Reactivity	Mouse
Host	Rabbit
Clonality	Polyclonal
Calculated MW	37576

Mafa Rabbit pAb - Additional Information

Gene ID 378435

Other Names

Transcription factor MafA, Pancreatic beta-cell-specific transcriptional activator, V-maf musculoaponeurotic fibrosarcoma oncogene homolog A, Mafa

Format

0.01M TBS(pH7.4), 0.09% (W/V) sodium azide and 50% Glycerol

Storage

Store at -20 °C for one year. Avoid repeated freeze/thaw cycles. When reconstituted in sterile pH 7.4 0.01M PBS or diluent of antibody the antibody is stable for at least two weeks at 2-4 °C.

Mafa Rabbit pAb - Protein Information

Name Mafa

Function

Transcriptional factor that activates insulin gene expression (PubMed:[12368292](http://www.uniprot.org/citations/12368292), PubMed:[15665000](http://www.uniprot.org/citations/15665000)). Acts synergistically with NEUROD1/BETA2 and PDX1 (PubMed:[15665000](http://www.uniprot.org/citations/15665000)). Binds the insulin enhancer C1/RIPE3b element (PubMed:[12917329](http://www.uniprot.org/citations/12917329), PubMed:[14680841](http://www.uniprot.org/citations/14680841), PubMed:[14973194](http://www.uniprot.org/citations/14973194), PubMed:[15665000](http://www.uniprot.org/citations/15665000)). Binds to consensus TRE-type MARE 5'-TGCTGACTCAGCA-3' DNA sequence (By similarity).

Cellular Location

Nucleus

Tissue Location

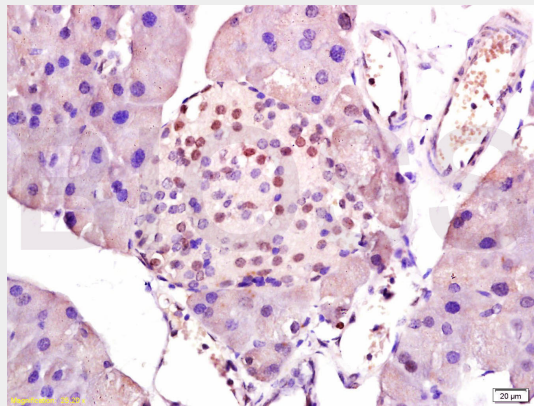
Expressed in brain, lung, spleen, pancreas and kidney (PubMed:12368292, PubMed:14680841). In the pancreas, expressed in the insulin-producing beta-cells of the islets of Langerhans (at protein level) (PubMed:12917329, PubMed:15923615). Also expressed in the eye (PubMed:12368292, PubMed:15923615)

Mafa Rabbit pAb - Protocols

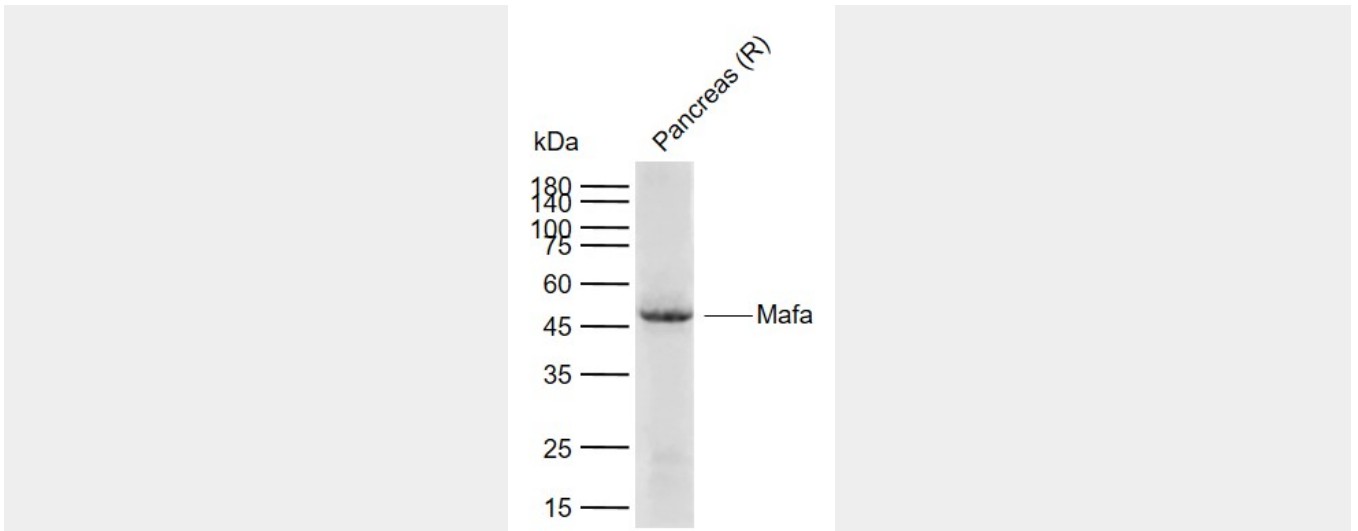
Provided below are standard protocols that you may find useful for product applications.

- [Western Blot](#)
- [Blocking Peptides](#)
- [Dot Blot](#)
- [Immunohistochemistry](#)
- [Immunofluorescence](#)
- [Immunoprecipitation](#)
- [Flow Cytometry](#)
- [Cell Culture](#)

Mafa Rabbit pAb - Images



Tissue/cell: rat pancreas tissue; 4% Paraformaldehyde-fixed and paraffin-embedded; Antigen retrieval: citrate buffer (0.01M, pH 6.0), Boiling bathing for 15min; Block endogenous peroxidase by 3% Hydrogen peroxide for 30min; Blocking buffer (normal goat serum,C-0005) at 37°C for 20 min; Incubation: Anti-Mafa Polyclonal Antibody, Unconjugated(AP94622) 1:400, overnight at 4°C, followed by conjugation to the secondary antibody(SP-0023) and DAB(C-0010) staining



Sample: Lane 1: Rat Pancreas tissue lysates Primary: Anti- Mafa (AP94622) at 1/1000 dilution
Secondary: IRDye800CW Goat Anti-Rabbit IgG at 1/20000 dilution Predicted band size: 37 kDa
Observed band size: 47 kDa

Mafa Rabbit pAb - Background

This product as supplied is intended for research use only, not for use in human, therapeutic or diagnostic applications.