

STOML2 Recombinant Mouse mAb
STOML2 Recombinant Mouse mAb
Catalog # AP94491

Specification

STOML2 Recombinant Mouse mAb - Product Information

Application	WB
Host	Rabbit
Clonality	Recombinant

STOML2 Recombinant Mouse mAb - Additional Information

Format

0.01M TBS(pH7.4), 0.09% (W/V) sodium azide and 50% Glycerol

Storage

Store at -20 °C for one year. Avoid repeated freeze/thaw cycles. When reconstituted in sterile pH 7.4 0.01M PBS or diluent of antibody the antibody is stable for at least two weeks at 2-4 °C.

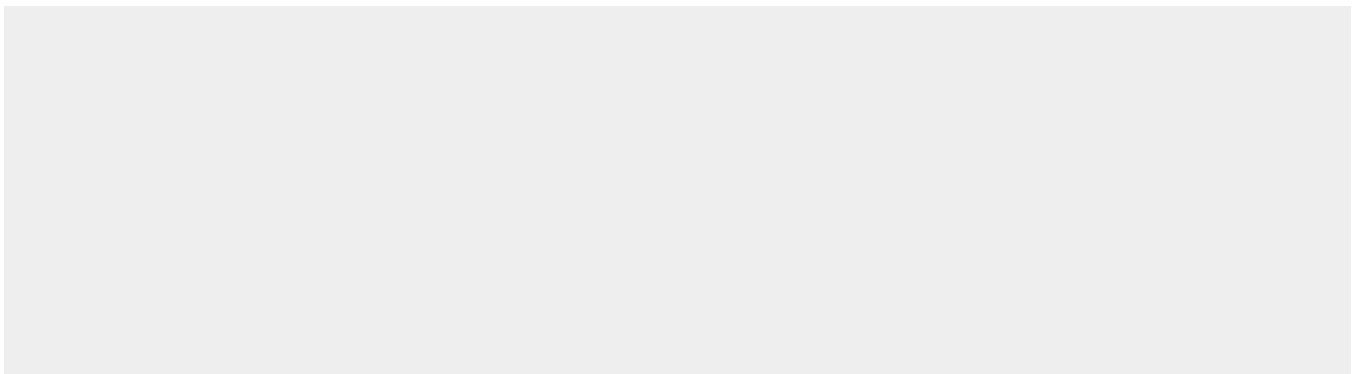
STOML2 Recombinant Mouse mAb - Protein Information

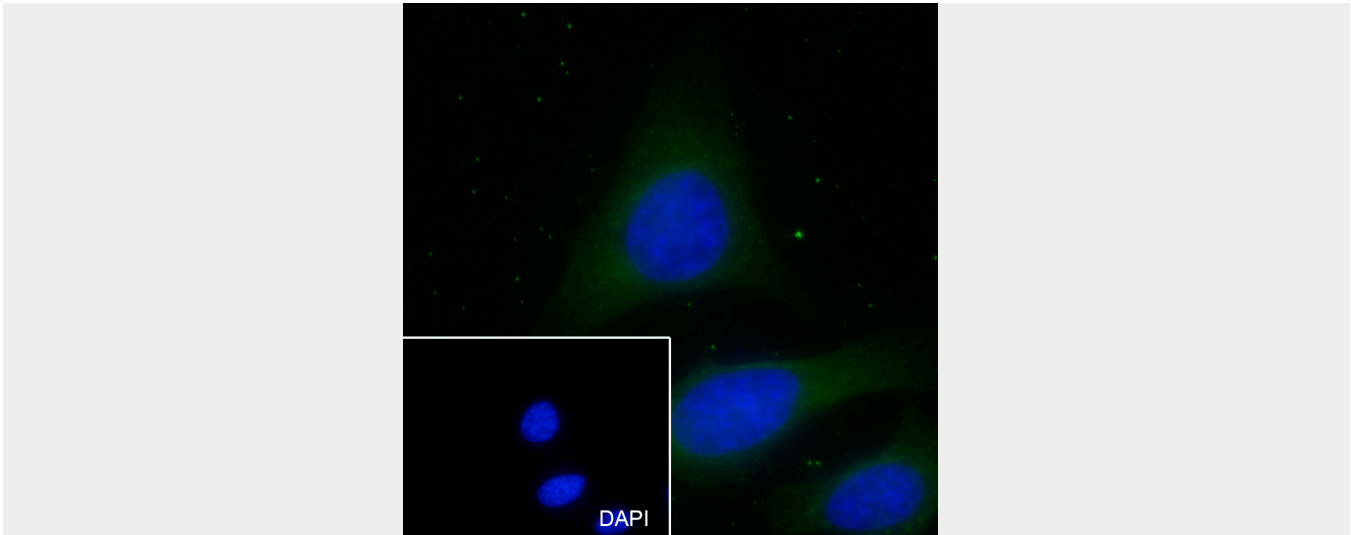
STOML2 Recombinant Mouse mAb - Protocols

Provided below are standard protocols that you may find useful for product applications.

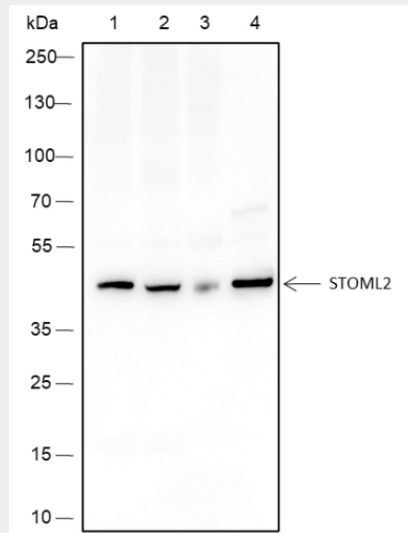
- [Western Blot](#)
- [Blocking Peptides](#)
- [Dot Blot](#)
- [Immunohistochemistry](#)
- [Immunofluorescence](#)
- [Immunoprecipitation](#)
- [Flow Cytometry](#)
- [Cell Culture](#)

STOML2 Recombinant Mouse mAb - Images





Cell line: HeLa Fixative: 100% Ice-cold methanol Permeabilization: 0.1% TritonX-100 Primary Ab dilution: 1:50 Primary incubation condition: 4°C overnight Secondary Ab: Goat Anti-Mouse IgG Nuclear counter stain: DAPI (Blue) Comment: Color green is the positive signal for AP94491



Blocking buffer: 5% NFDM/TBST Primary Ab dilution: 1:10000 Primary Ab incubation condition: 2 hours at room temperature Secondary Ab: Goat Anti-Mouse IgG H&L (HRP) Lysate: 1: JK, 2: MCF-7, 3: Rat Brain, 4: N2a Protein loading quantity: 20 µg Exposure time: 3 s Predicted MW: 39 kDa Observed MW: 39 kDa

STOML2 Recombinant Mouse mAb - Background

This product as supplied is intended for research use only, not for use in human, therapeutic or diagnostic applications.