

PDP1 Recombinant Rabbit mAb
PDP1 Recombinant Rabbit mAb
Catalog # AP94486

Specification

PDP1 Recombinant Rabbit mAb - Product Information

Application	WB
Host	Rabbit
Clonality	Recombinant

PDP1 Recombinant Rabbit mAb - Additional Information

Format

0.01M TBS(pH7.4), 0.09% (W/V) sodium azide and 50% Glycerol

Storage

Store at -20 °C for one year. Avoid repeated freeze/thaw cycles. When reconstituted in sterile pH 7.4 0.01M PBS or diluent of antibody the antibody is stable for at least two weeks at 2-4 °C.

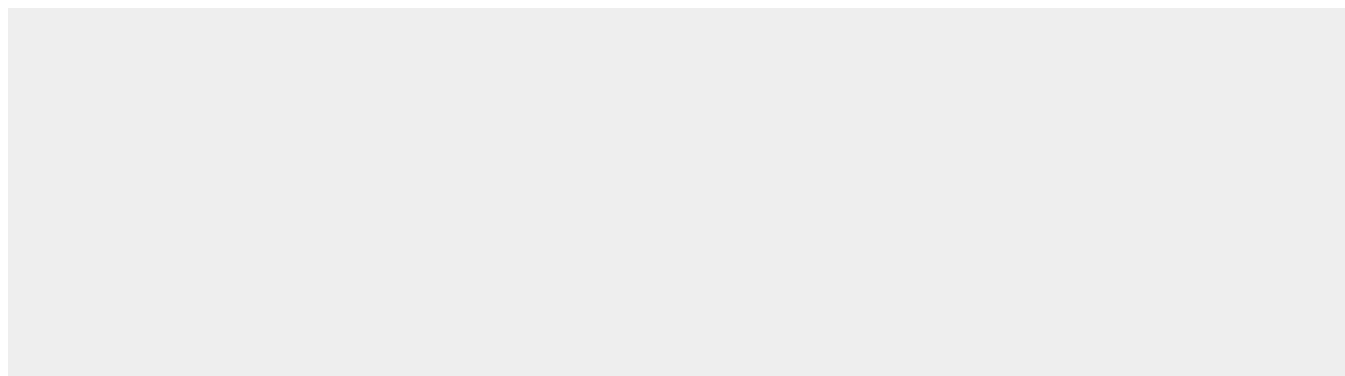
PDP1 Recombinant Rabbit mAb - Protein Information

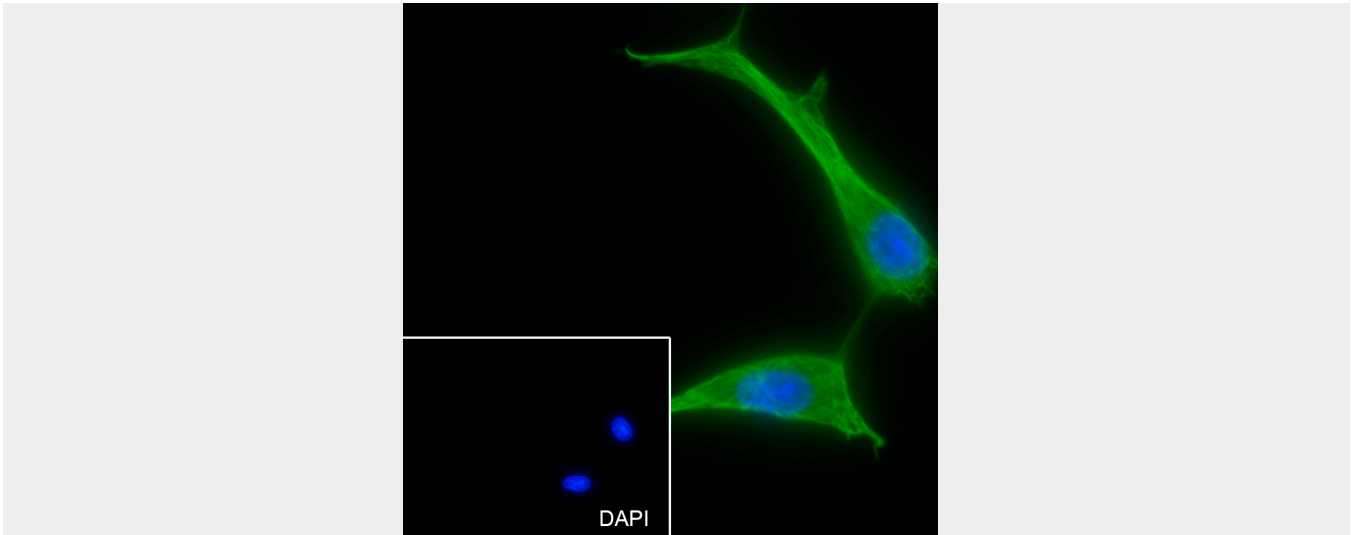
PDP1 Recombinant Rabbit mAb - Protocols

Provided below are standard protocols that you may find useful for product applications.

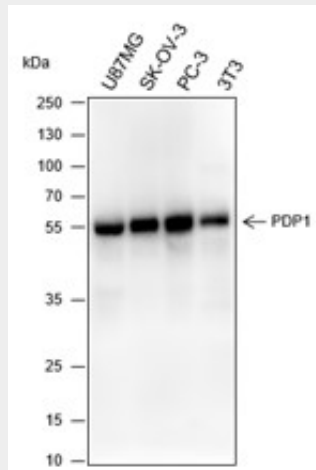
- [Western Blot](#)
- [Blocking Peptides](#)
- [Dot Blot](#)
- [Immunohistochemistry](#)
- [Immunofluorescence](#)
- [Immunoprecipitation](#)
- [Flow Cytometry](#)
- [Cell Culture](#)

PDP1 Recombinant Rabbit mAb - Images





Cell line: U87-MG Fixative: 100% Ice-cold methanol Permeabilization: 0.1% TritonX-100 Primary ab dilution: 1:50 Primary incubation condition: 4°C overnight Secondary ab: Goat Anti-Rabbit IgG Nuclear counter stain: DAPI (Blue) Comment: Color green is the positive signal for AP94486



Blocking buffer: 5% NFDM/TBST Primary ab dilution: 1:1000 Primary ab incubation condition: 2 hours at room temperature Secondary ab: Goat Anti-Rabbit IgG H&L (HRP) Lysate: U87MG, SK-OV-3, PC-3, 3T3 Protein loading quantity: 20 µg Exposure time: 60 s Predicted MW: 55 kDa Observed MW: 55 kDa

PDP1 Recombinant Rabbit mAb - Background

This product as supplied is intended for research use only, not for use in human, therapeutic or diagnostic applications.