

**CTSD Antibody (C-term)**  
**Purified Rabbit Polyclonal Antibody (Pab)**  
**Catalog # AP9447b**

**Specification**

---

**CTSD Antibody (C-term) - Product Information**

Application	<b>WB,E</b>
Primary Accession	<a href="#">P07339</a>
Reactivity	<b>Human</b>
Host	<b>Rabbit</b>
Clonality	<b>Polyclonal</b>
Isotype	<b>Rabbit IgG</b>
Calculated MW	<b>44552</b>
Antigen Region	<b>377-408</b>

**CTSD Antibody (C-term) - Additional Information**

**Gene ID** 1509

**Other Names**

Cathepsin D, Cathepsin D light chain, Cathepsin D heavy chain, CTSD, CPSD

**Target/Specificity**

This CTSD antibody is generated from rabbits immunized with a KLH conjugated synthetic peptide between 377-408 amino acids from the C-terminal region of human CTSD.

**Dilution**

WB~~1:1000

**Format**

Purified polyclonal antibody supplied in PBS with 0.09% (W/V) sodium azide. This antibody is prepared by Saturated Ammonium Sulfate (SAS) precipitation followed by dialysis against PBS.

**Storage**

Maintain refrigerated at 2-8°C for up to 2 weeks. For long term storage store at -20°C in small aliquots to prevent freeze-thaw cycles.

**Precautions**

CTSD Antibody (C-term) is for research use only and not for use in diagnostic or therapeutic procedures.

**CTSD Antibody (C-term) - Protein Information**

**Name** CTSD

**Synonyms** CPSD

**Function** Acid protease active in intracellular protein breakdown. Plays a role in APP processing

following cleavage and activation by ADAM30 which leads to APP degradation (PubMed:[27333034](#)). Involved in the pathogenesis of several diseases such as breast cancer and possibly Alzheimer disease.

#### Cellular Location

Lysosome. Melanosome. Secreted, extracellular space. Note=Identified by mass spectrometry in melanosome fractions from stage I to stage IV. In aortic samples, detected as an extracellular protein loosely bound to the matrix (PubMed:20551380)

#### Tissue Location

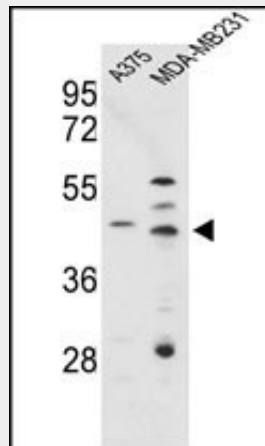
Expressed in the aorta extracellular space (at protein level) (PubMed:20551380). Expressed in liver (at protein level) (PubMed:1426530).

### CTSD Antibody (C-term) - Protocols

Provided below are standard protocols that you may find useful for product applications.

- [Western Blot](#)
- [Blocking Peptides](#)
- [Dot Blot](#)
- [Immunohistochemistry](#)
- [Immunofluorescence](#)
- [Immunoprecipitation](#)
- [Flow Cytometry](#)
- [Cell Culture](#)

### CTSD Antibody (C-term) - Images



Western blot analysis of CTSD Antibody (C-term) (Cat. #AP9447b) in A375, MDA-MB231 cell line lysates (35ug/lane). CTSD (arrow) was detected using the purified Pab.

### CTSD Antibody (C-term) - Background

CTSD encodes a lysosomal aspartyl protease composed of a dimer of disulfide-linked heavy and light chains, both produced from a single protein precursor. This proteinase, which is a member of the peptidase C1 family, has a specificity similar to but narrower than that of pepsin A. Transcription of this gene is initiated from several sites, including one which is a start site for an estrogen-regulated transcript.

### CTSD Antibody (C-term) - References

Christensen, B., et al. J. Biol. Chem. 285(11):7929-7937(2010)  
Albayrak, O., et al. J. Gerontol. A Biol. Sci. Med. Sci. 65(3):219-224(2010)  
Heinrich, M., et al. EMBO J. 18(19):5252-5263(1999)