

MAFA Antibody (C-term)
Purified Rabbit Polyclonal Antibody (Pab)
Catalog # AP9440b**Specification**

MAFA Antibody (C-term) - Product Information

Application	WB,E
Primary Accession	Q8NHW3
Other Accession	Q8CF90 , D3ZNT6
Reactivity	Human
Predicted	Mouse, Rat
Host	Rabbit
Clonality	Polyclonal
Isotype	Rabbit IgG
Calculated MW	36982
Antigen Region	282-311

MAFA Antibody (C-term) - Additional Information**Gene ID** 389692**Other Names**

Transcription factor MafA, Pancreatic beta-cell-specific transcriptional activator, Transcription factor RIPE3b1, V-maf musculoaponeurotic fibrosarcoma oncogene homolog A, MAFA

Target/Specificity

This MAFA antibody is generated from rabbits immunized with a KLH conjugated synthetic peptide between 282-311 amino acids from the C-terminal region of human MAFA.

Dilution

WB~~1:1000

Format

Purified polyclonal antibody supplied in PBS with 0.09% (W/V) sodium azide. This antibody is prepared by Saturated Ammonium Sulfate (SAS) precipitation followed by dialysis against PBS.

Storage

Maintain refrigerated at 2-8°C for up to 2 weeks. For long term storage store at -20°C in small aliquots to prevent freeze-thaw cycles.

Precautions

MAFA Antibody (C-term) is for research use only and not for use in diagnostic or therapeutic procedures.

MAFA Antibody (C-term) - Protein Information**Name** MAFA

Function Transcription factor that activates insulin gene expression (PubMed:[12011435](#), PubMed:[15993959](#)). Acts synergistically with NEUROD1/BETA2 and PDX1 (PubMed:[15993959](#)). Binds the insulin enhancer C1/RIPE3b element (PubMed:[12011435](#)). Binds to consensus TRE-type MARE 5'-TGCTGACTCAGCA-3' DNA sequence (PubMed:[23148532](#), PubMed:[29339498](#)).

Cellular Location

Nucleus {ECO:0000255|PROSITE-ProRule:PRU00978, ECO:0000269|PubMed:12011435, ECO:0000269|PubMed:12917329}

Tissue Location

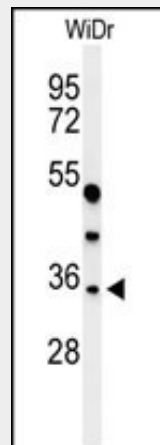
Expressed in the islets of Langerhans (at protein level).

MAFA Antibody (C-term) - Protocols

Provided below are standard protocols that you may find useful for product applications.

- [Western Blot](#)
- [Blocking Peptides](#)
- [Dot Blot](#)
- [Immunohistochemistry](#)
- [Immunofluorescence](#)
- [Immunoprecipitation](#)
- [Flow Cytometry](#)
- [Cell Culture](#)

MAFA Antibody (C-term) - Images



Western blot analysis of MAFA Antibody (C-term) (Cat. #AP9440b) in WiDr cell line lysates (35ug/lane). MAFA (arrow) was detected using the purified Pab.

MAFA Antibody (C-term) - Background

MAFA is a transcription factor that binds RIPE3b, a conserved enhancer element that regulates pancreatic beta cell-specific expression of the insulin gene.

MAFA Antibody (C-term) - References

- Kondo, T., et al. Mol. Endocrinol. 23(8):1281-1290(2009)
Kaneto, H., et al. Adv. Drug Deliv. Rev. 61 (7-8), 489-496 (2009)
Garin, I., et al. Diabet. Med. 26(7):746-748(2009)

Vanderford, N.L., et al. Arch. Biochem. Biophys. 480(2):138-142(2008)
Martin, C.C., et al. J. Mol. Endocrinol. 41(5):315-328(2008)