

CAPG Recombinant Mouse mAb
CAPG Recombinant Mouse mAb
Catalog # AP94396

Specification

CAPG Recombinant Mouse mAb - Product Information

Application	WB
Host	Rabbit
Clonality	Recombinant

CAPG Recombinant Mouse mAb - Additional Information

Format

0.01M TBS(pH7.4), 0.09% (W/V) sodium azide and 50% Glycerol

Storage

Store at -20 °C for one year. Avoid repeated freeze/thaw cycles. When reconstituted in sterile pH 7.4 0.01M PBS or diluent of antibody the antibody is stable for at least two weeks at 2-4 °C.

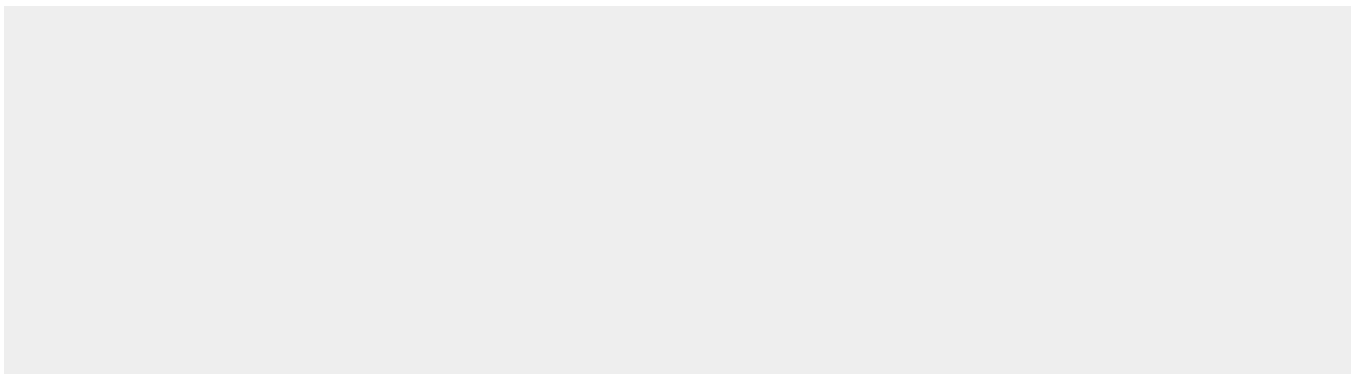
CAPG Recombinant Mouse mAb - Protein Information

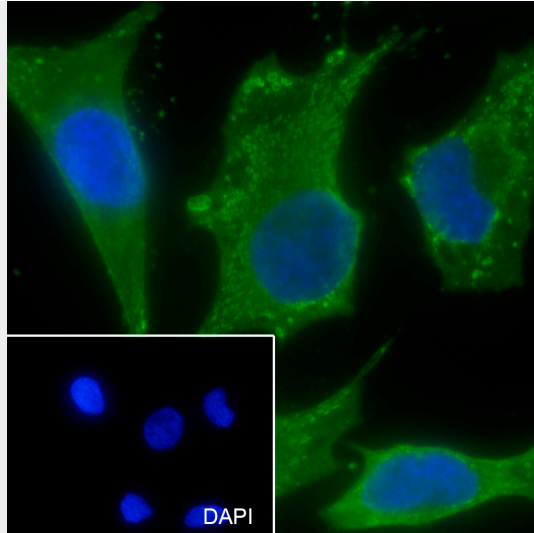
CAPG Recombinant Mouse mAb - Protocols

Provided below are standard protocols that you may find useful for product applications.

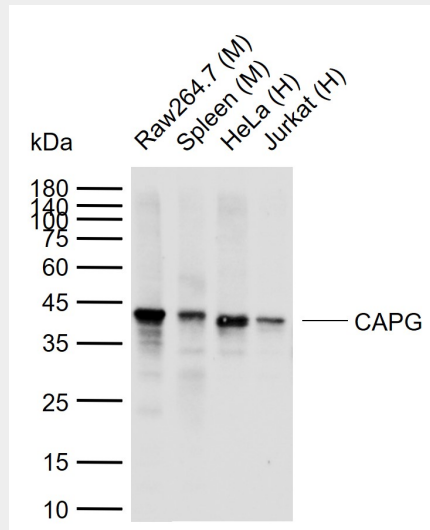
- [Western Blot](#)
- [Blocking Peptides](#)
- [Dot Blot](#)
- [Immunohistochemistry](#)
- [Immunofluorescence](#)
- [Immunoprecipitation](#)
- [Flow Cytometry](#)
- [Cell Culture](#)

CAPG Recombinant Mouse mAb - Images





Cell line: HeLa Fixative: 4% Paraformaldehyde Permeabilization: 0.1% TritonX-100 Primary Ab dilution: 1:50 Primary incubation condition: 4°C overnight Secondary Ab: Goat Anti-Rabbit IgG Nuclear counter stain: DAPI (Blue) Comment: Color green is the positive signal for AP94396



Sample: Lane 1: Mouse Raw264.7 cell lysates Lane 2: Mouse Spleen tissue lysates Lane 3: Human HeLa cell lysates Lane 4: Human Jurkat cell lysates Primary: Anti-CAPG (AP94396) at 1/1000 dilution Secondary: IRDye800CW Goat Anti-Mouse IgG at 1/20000 dilution Predicted band size: kDa Observed band size: 40 kDa

CAPG Recombinant Mouse mAb - Background

This product as supplied is intended for research use only, not for use in human, therapeutic or diagnostic applications.