

RPA2 Recombinant Rabbit mAb
RPA2 Recombinant Rabbit mAb
Catalog # AP94262**Specification**

RPA2 Recombinant Rabbit mAb - Product Information

Application	WB, IHC-P
Host	Rabbit
Clonality	Recombinant

RPA2 Recombinant Rabbit mAb - Additional Information**Format**

0.01M TBS(pH7.4), 0.09% (W/V) sodium azide and 50% Glycerol

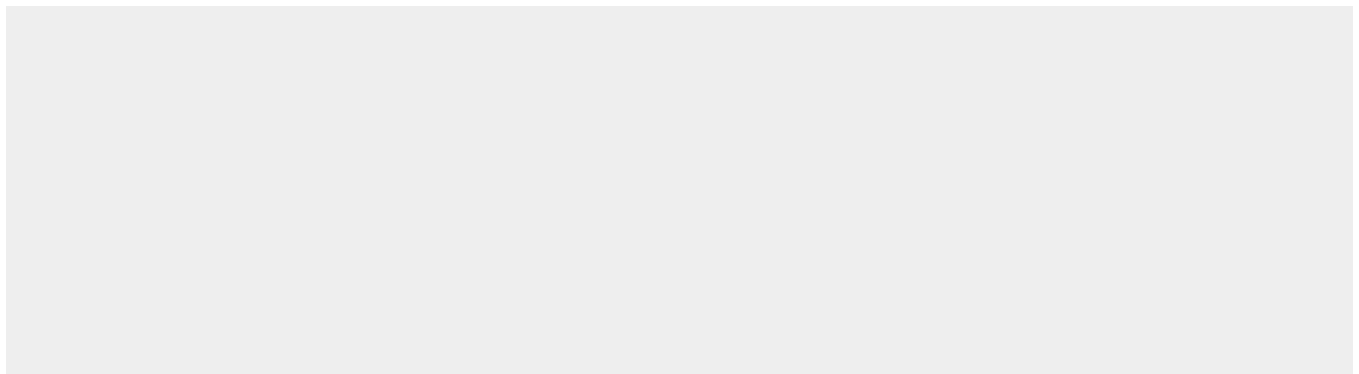
Storage

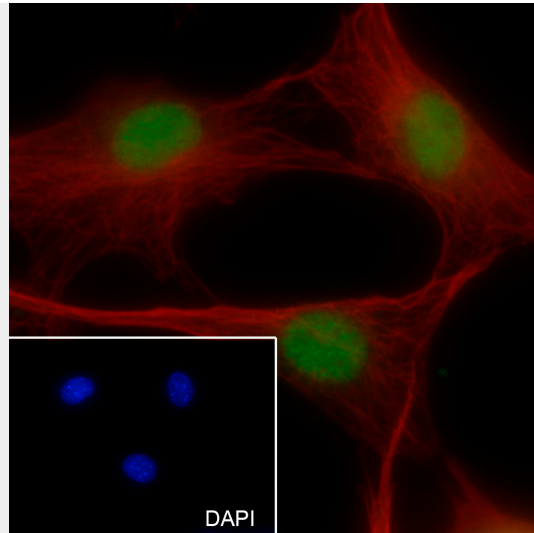
Store at -20 °C for one year. Avoid repeated freeze/thaw cycles. When reconstituted in sterile pH 7.4 0.01M PBS or diluent of antibody the antibody is stable for at least two weeks at 2-4 °C.

RPA2 Recombinant Rabbit mAb - Protein Information**RPA2 Recombinant Rabbit mAb - Protocols**

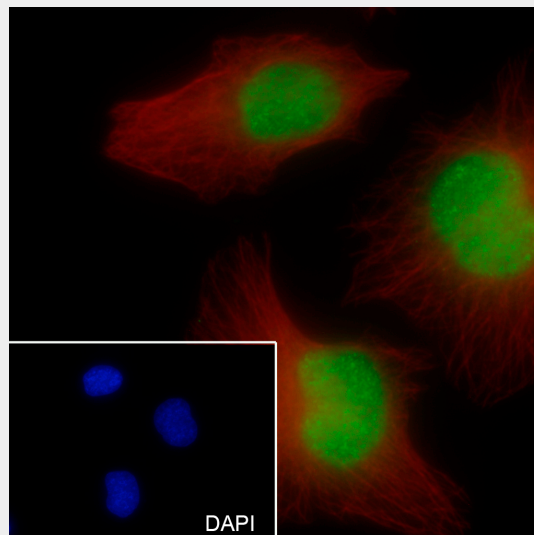
Provided below are standard protocols that you may find useful for product applications.

- [Western Blot](#)
- [Blocking Peptides](#)
- [Dot Blot](#)
- [Immunohistochemistry](#)
- [Immunofluorescence](#)
- [Immunoprecipitation](#)
- [Flow Cytometry](#)
- [Cell Culture](#)

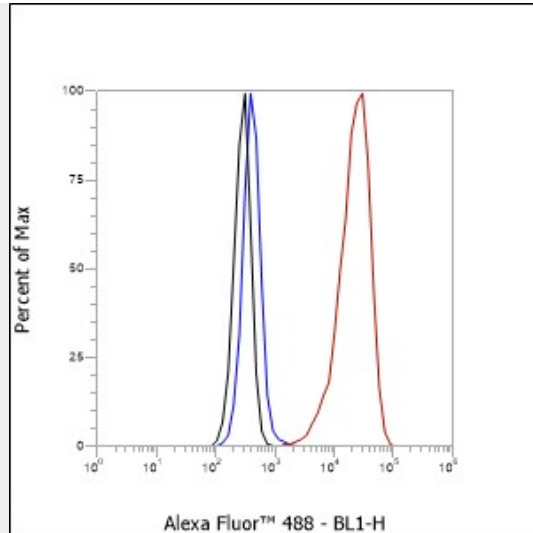
RPA2 Recombinant Rabbit mAb - Images



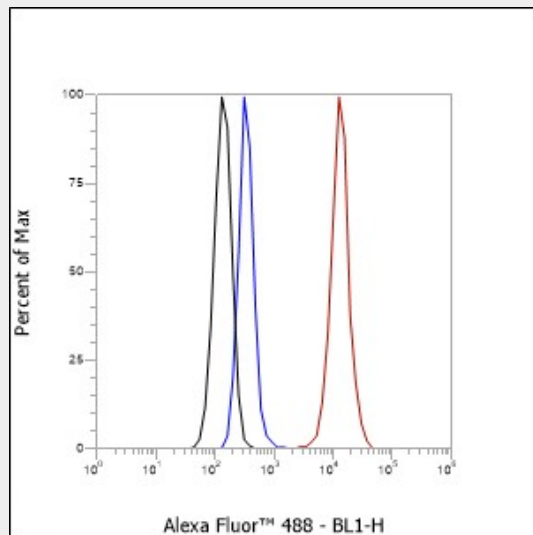
Cell line: NIH/3T3 Fixative: 100% Ice-cold methanol Permeabilization: 0.1% TritonX-100 Primary ab dilution: 1:50 Primary incubation condition: 4°C overnight Secondary ab: Goat Anti-Rabbit IgG Nuclear counter stain: DAPI (Blue) Counter stain: Tubulin (Red) Comment: Color green is the positive signal for AP94262



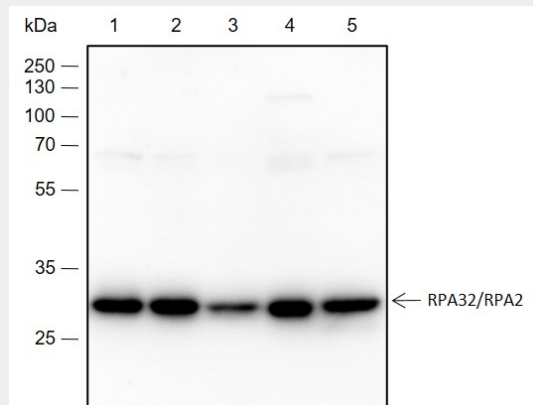
Cell line: HeLa Fixative: 100% Ice-cold methanol Permeabilization: 0.1% TritonX-100 Primary ab dilution: 1:50 Primary incubation condition: 4°C overnight Secondary ab: Goat Anti-Rabbit IgG Nuclear counter stain: DAPI (Blue) Counter stain: Tubulin (Red) Comment: Color green is the positive signal for AP94262



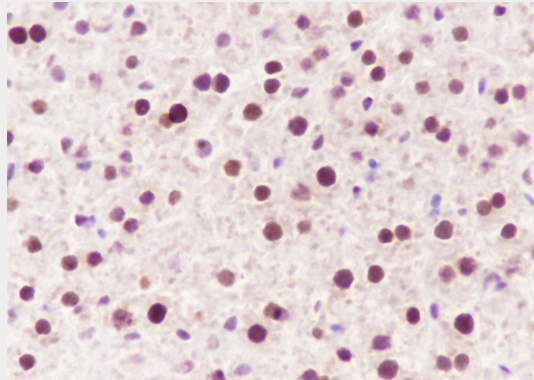
Cell line: HeLa Fixative: 4% Paraformaldehyde Permeabilization: 90% Methanol Primary ab dilution: 1:100 Secondary ab: Goat anti Rabbit IgG Unlabelled control: The cell without incubation with primary antibody and secondary antibody (Black line). Isotype control: Rabbit monoclonal IgG (Blue line). Comment: Line red is the positive signal for AP94262



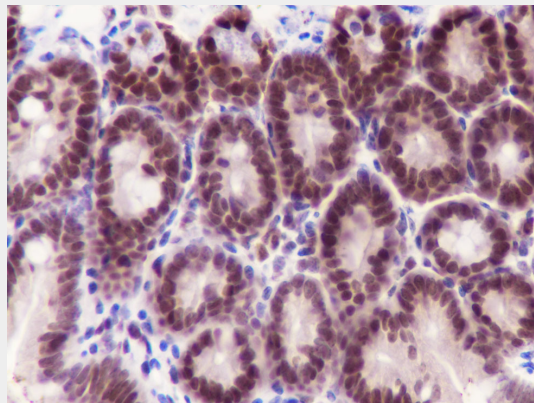
Cell line: NIH/3T3 Fixative: 4% Paraformaldehyde Permeabilization: 90% Methanol Primary ab dilution: 1:100 Secondary ab: Goat anti Rabbit IgG Unlabelled control: The cell without incubation with primary antibody and secondary antibody (Black line). Isotype control: Rabbit monoclonal IgG (Blue line). Comment: Line red is the positive signal for AP94262



Blocking buffer: 5% NFDM/TBST Primary ab dilution: 1:2000 Primary ab incubation condition: 2 hours at room temperature Secondary ab: Goat Anti-Rabbit IgG H&L (HRP) Lysate: 1: HeLa, 2: MCF-7, 3: HepG2, 4: C6, 5: NIH-3T3 Protein loading quantity: 20 µg Exposure time: 30 s Predicted MW: 29 kDa Observed MW: 29 kDa



Tissue: Rat liver Section type: Formalin fixed & Paraffin -embedded section Retrieval method: High temperature and high pressure Retrieval buffer: Tris/EDTA buffer, pH 9.0 Primary ab dilution: 1:1000 Primary ab incubation condition: 1 hour at room temperature Secondary ab: SP Kit(Rabbit) (sp-0023) Counter stain: Hematoxylin (Blue) Comment: Color brown is the positive signal for AP94262



Tissue: Mouse small intestine Section type: Formalin fixed & Paraffin -embedded section Retrieval method: High temperature and high pressure Retrieval buffer: Tris/EDTA buffer, pH 9.0 Primary ab dilution: 1:1000 Primary ab incubation condition: 1 hour at room temperature Secondary ab: SP Kit(Rabbit) (sp-0023) Counter stain: Hematoxylin (Blue) Comment: Color brown is the positive signal for AP94262

RPA2 Recombinant Rabbit mAb - Background

This product as supplied is intended for research use only, not for use in human, therapeutic or diagnostic applications.