

**SUV39H2 Recombinant Rabbit mAb**  
**SUV39H2 Recombinant Rabbit mAb**  
**Catalog # AP94254****Specification**

---

**SUV39H2 Recombinant Rabbit mAb - Product Information**

Application	<b>WB</b>
Host	<b>Rabbit</b>
Clonality	<b>Recombinant</b>

**SUV39H2 Recombinant Rabbit mAb - Additional Information****Format**

0.01M TBS(pH7.4), 0.09% (W/V) sodium azide and 50% Glycerol

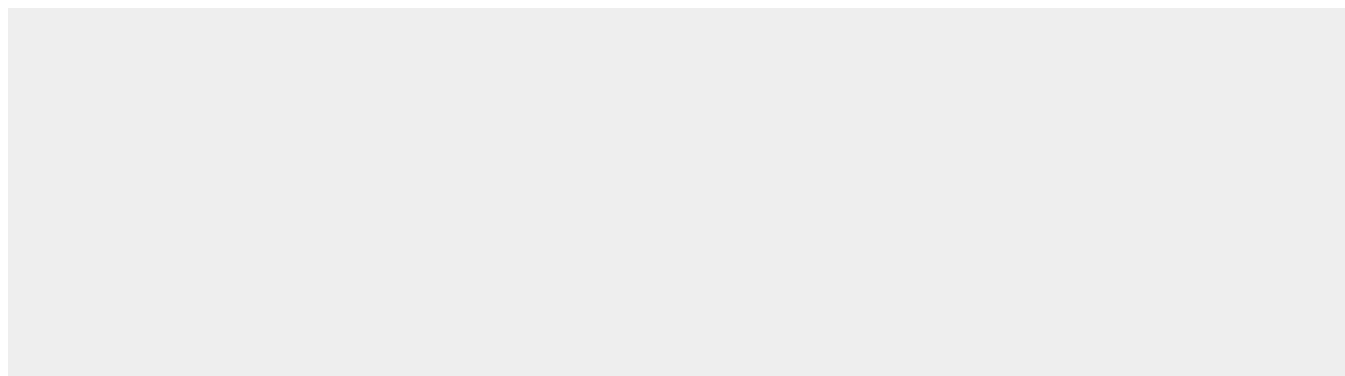
**Storage**

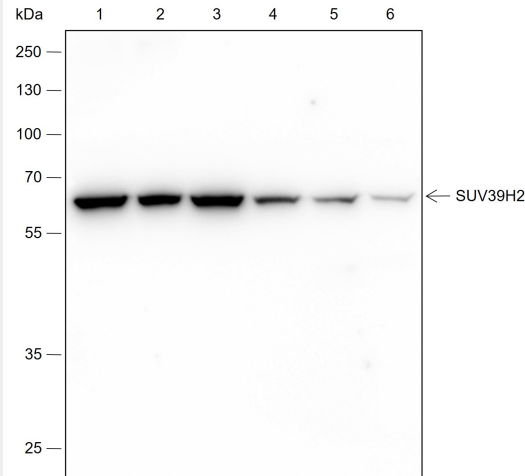
Store at -20 °C for one year. Avoid repeated freeze/thaw cycles. When reconstituted in sterile pH 7.4 0.01M PBS or diluent of antibody the antibody is stable for at least two weeks at 2-4 °C.

**SUV39H2 Recombinant Rabbit mAb - Protein Information****SUV39H2 Recombinant Rabbit mAb - Protocols**

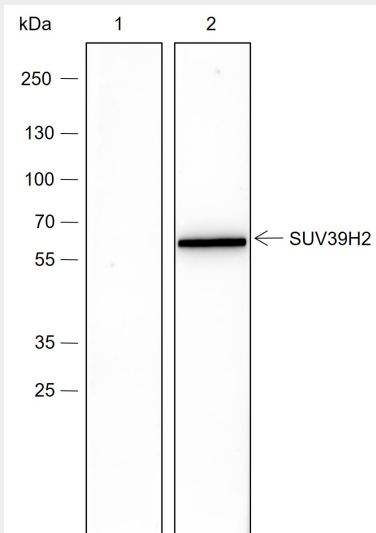
Provided below are standard protocols that you may find useful for product applications.

- [Western Blot](#)
- [Blocking Peptides](#)
- [Dot Blot](#)
- [Immunohistochemistry](#)
- [Immunofluorescence](#)
- [Immunoprecipitation](#)
- [Flow Cytometry](#)
- [Cell Culture](#)

**SUV39H2 Recombinant Rabbit mAb - Images**



Blocking buffer: 5% NFDM/TBST Primary ab dilution: 1:2000 Primary ab incubation condition: 2 hours at room temperature Secondary ab: Goat Anti-Rabbit IgG H&L (HRP) Lysate: 1: SHSY-5Y, 2: MOLT-4, 3: NIH-3T3, 4: C6, 5: Mouse testis, 6: Rat testis Protein loading quantity: 20 µg Exposure time: 60 s Predicted MW: 47 kDa Observed MW: 65 kDa



Blocking buffer: 5% NFDM/TBST Primary ab dilution: 1:1000 Primary ab incubation condition: 2 hours at room temperature Secondary ab: Goat Anti-Rabbit IgG H&L (HRP) Lysate: 1: SHSY-5Y cell lysate, the SUV39H2 Rabbit mAb pre-adsorbed with 3 µM of the synthetic peptides; 2: SHSY-5Y cell lysate, the SUV39H2 Rabbit mAb with no peptide blocking. Protein loading quantity: 20 µg Exposure time: 30 s Predicted MW: 47 kDa Observed MW: 65 kDa

### SUV39H2 Recombinant Rabbit mAb - Background

This product as supplied is intended for research use only, not for use in human, therapeutic or diagnostic applications.