

Neuropilin 1 Rabbit pAb
Neuropilin 1 Rabbit pAb
Catalog # AP94058

Specification

Neuropilin 1 Rabbit pAb - Product Information

Application	WB
Primary Accession	Q5T7F3
Reactivity	Human
Host	Rabbit
Clonality	Polyclonal

Neuropilin 1 Rabbit pAb - Additional Information

Format

0.01M TBS(pH7.4), 0.09% (W/V) sodium azide and 50% Glyce

Storage

Store at -20 °C for one year. Avoid repeated freeze/thaw cycles. When reconstituted in sterile pH 7.4 0.01M PBS or diluent of antibody the antibody is stable for at least two weeks at 2-4 °C.

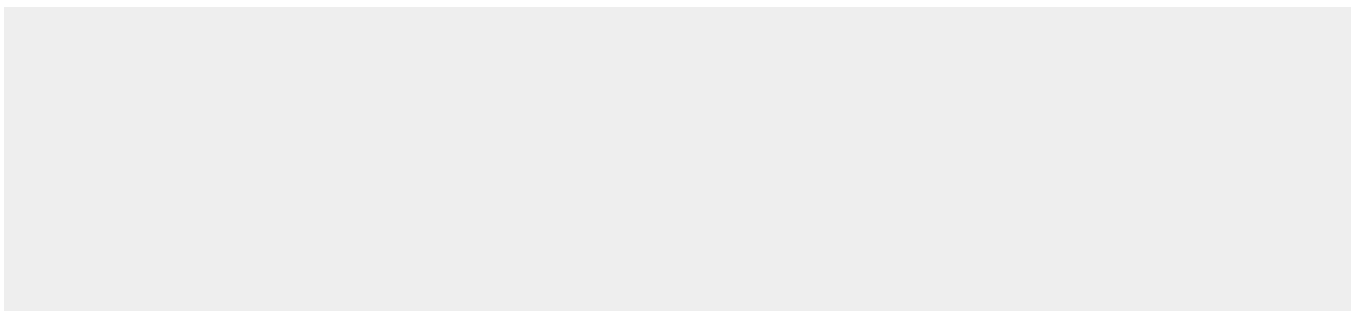
Neuropilin 1 Rabbit pAb - Protein Information

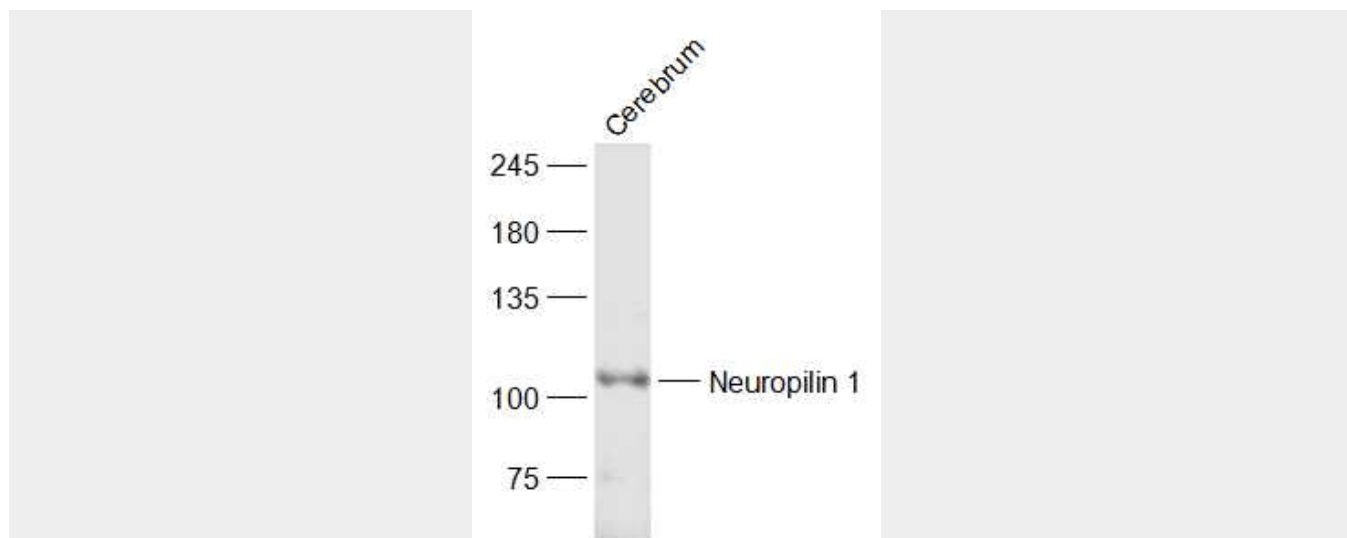
Neuropilin 1 Rabbit pAb - Protocols

Provided below are standard protocols that you may find useful for product applications.

- [Western Blot](#)
- [Blocking Peptides](#)
- [Dot Blot](#)
- [Immunohistochemistry](#)
- [Immunofluorescence](#)
- [Immunoprecipitation](#)
- [Flow Cytometry](#)
- [Cell Culture](#)

Neuropilin 1 Rabbit pAb - Images





Sample: Cerebrum (Rat) Lysate at 40 ug Primary: Anti-Neuropilin 1 (AP94058) at 1/1000 dilution
Secondary: IRDye800CW Goat Anti-Rabbit IgG at 1/20000 dilution Predicted band size: 100 kD
Observed band size: 110 kD

Neuropilin 1 Rabbit pAb - Background

This product as supplied is intended for research use only, not for use in human, therapeutic or diagnostic applications.