

**Neuropilin 1 Rabbit pAb**  
**Neuropilin 1 Rabbit pAb**  
**Catalog # AP94057**

**Specification**

---

**Neuropilin 1 Rabbit pAb - Product Information**

Application	<b>WB</b>
Primary Accession	<a href="#">Q5T7F3</a>
Reactivity	<b>Human</b>
Host	<b>Rabbit</b>
Clonality	<b>Polyclonal</b>

**Neuropilin 1 Rabbit pAb - Additional Information**

**Format**

0.01M TBS(pH7.4), 0.09% (W/V) sodium azide and 50% Glyce

**Storage**

Store at -20 °C for one year. Avoid repeated freeze/thaw cycles. When reconstituted in sterile pH 7.4 0.01M PBS or diluent of antibody the antibody is stable for at least two weeks at 2-4 °C.

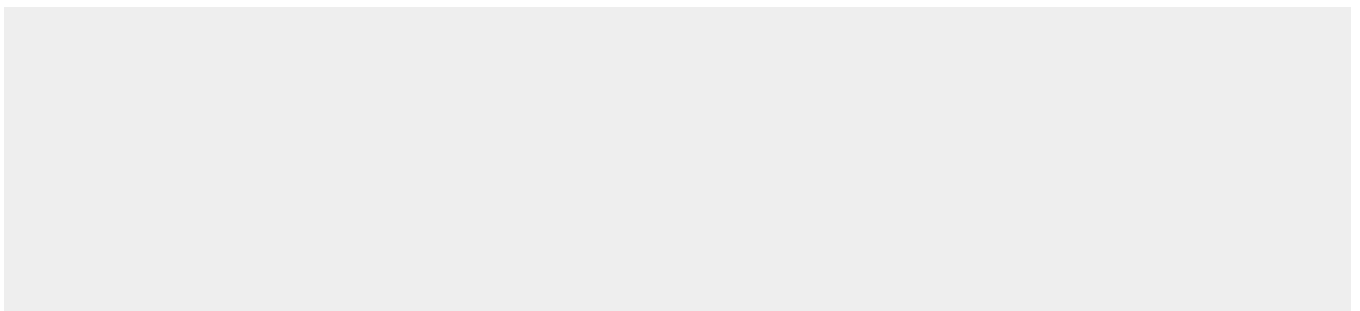
**Neuropilin 1 Rabbit pAb - Protein Information**

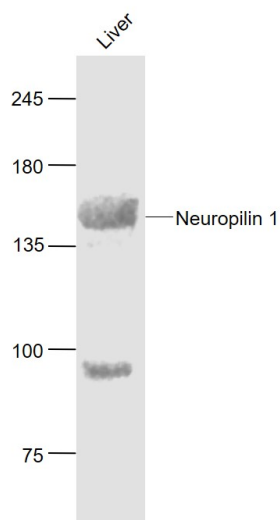
**Neuropilin 1 Rabbit pAb - Protocols**

Provided below are standard protocols that you may find useful for product applications.

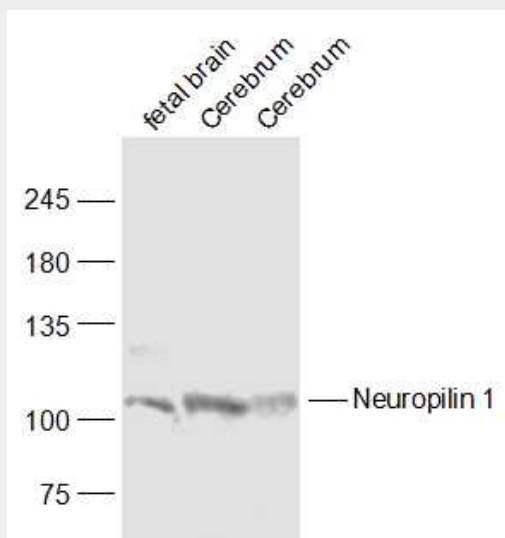
- [Western Blot](#)
- [Blocking Peptides](#)
- [Dot Blot](#)
- [Immunohistochemistry](#)
- [Immunofluorescence](#)
- [Immunoprecipitation](#)
- [Flow Cytometry](#)
- [Cell Culture](#)

**Neuropilin 1 Rabbit pAb - Images**





Sample: Liver (Mouse) Lysate at 40 ug Primary: Anti- Neuropilin 1 (AP94057) at 1/1000 dilution  
 Secondary: IRDye800CW Goat Anti-Rabbit IgG at 1/20000 dilution Predicted band size: 100 kD  
 Observed band size: 140 kD



Sample: Fatal brain (Mouse) Lysate at 40 ug Cerebrum (Mouse) Lysate at 40 ug Cerebrum (Rat)  
 Lysate at 40 ug Primary: Anti-Neuropilin 1 (AP94057) at 1/1000 dilution Secondary: IRDye800CW  
 Goat Anti-Rabbit IgG at 1/20000 dilution Predicted band size: 100 kD Observed band size: 110 kD

**Neuropilin 1 Rabbit pAb - Background**

This product as supplied is intended for research use only, not for use in human, therapeutic or diagnostic applications.