

**GlyR alpha 1 + 2 + 3 Rabbit pAb**  
**GlyR alpha 1 + 2 + 3 Rabbit pAb**  
**Catalog # AP94037****Specification**

---

**GlyR alpha 1 + 2 + 3 Rabbit pAb - Product Information**

Application	IHC-P, WB
Primary Accession	<a href="#">O6DJV9</a>
Reactivity	Human
Host	Rabbit
Clonality	Polyclonal

**GlyR alpha 1 + 2 + 3 Rabbit pAb - Additional Information****Format**

0.01M TBS(pH7.4), 0.09% (W/V) sodium azide and 50% Glyce

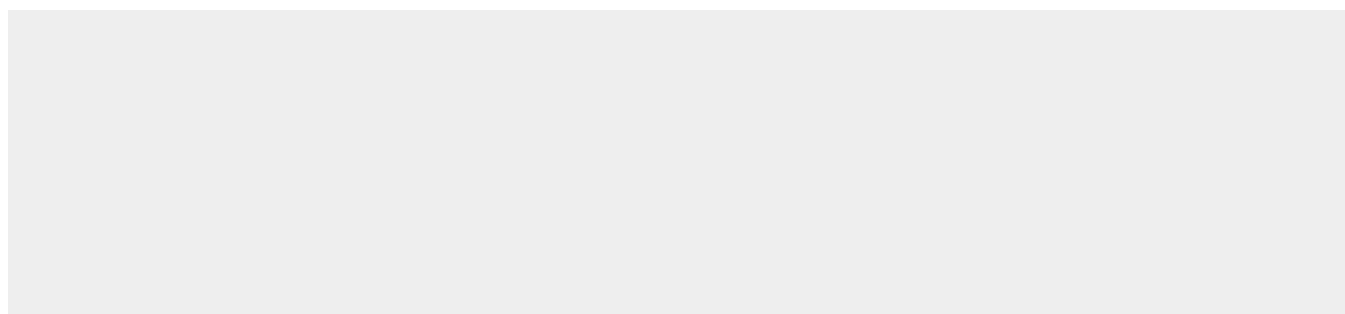
**Storage**

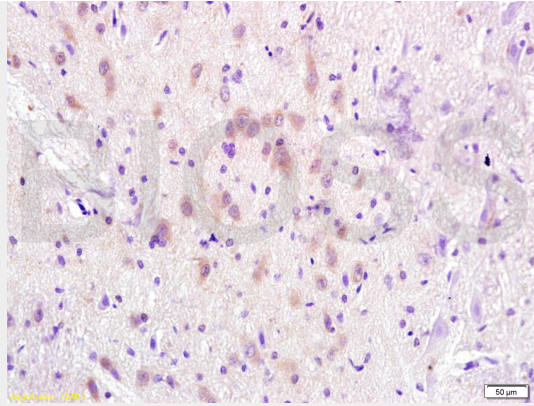
Store at -20 °C for one year. Avoid repeated freeze/thaw cycles. When reconstituted in sterile pH 7.4 0.01M PBS or diluent of antibody the antibody is stable for at least two weeks at 2-4 °C.

**GlyR alpha 1 + 2 + 3 Rabbit pAb - Protein Information****GlyR alpha 1 + 2 + 3 Rabbit pAb - Protocols**

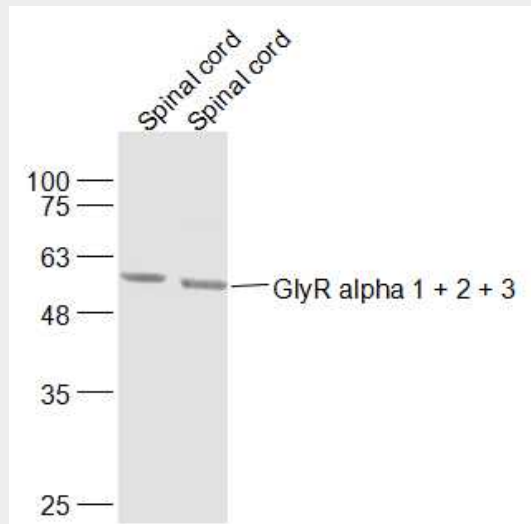
Provided below are standard protocols that you may find useful for product applications.

- [Western Blot](#)
- [Blocking Peptides](#)
- [Dot Blot](#)
- [Immunohistochemistry](#)
- [Immunofluorescence](#)
- [Immunoprecipitation](#)
- [Flow Cytometry](#)
- [Cell Culture](#)

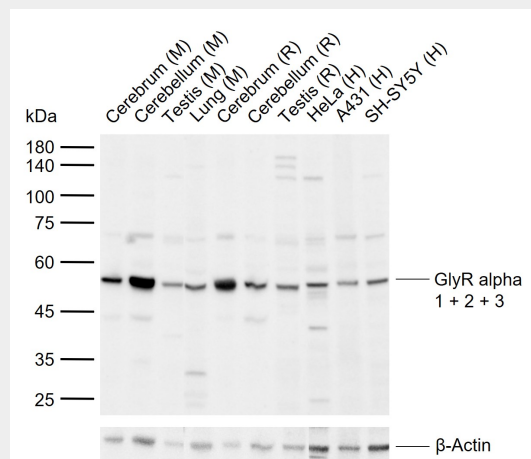
**GlyR alpha 1 + 2 + 3 Rabbit pAb - Images**



Tissue/cell: rat brain tissue; 4% Paraformaldehyde-fixed and paraffin-embedded; Antigen retrieval: citrate buffer ( 0.01M, pH 6.0 ), Boiling bathing for 15min; Block endogenous peroxidase by 3% Hydrogen peroxide for 30min; Blocking buffer (normal goat serum,C-0005) at 37°C for 20 min; Incubation: Anti-GlyR alpha 1/2/3 Polyclonal Antibody, Unconjugated(AP94037) 1:200, overnight at 4°C, followed by conjugation to the secondary antibody(SP-0023) and DAB(C-0010) staining



Sample: Spinal cord (Mouse) Lysate at 40 ug Spinal cord (Rat) Lysate at 40 ug Primary: Anti-GlyR alpha 1 + 2 + 3 (AP94037) at 1/1000 dilution Secondary: IRDye800CW Goat Anti-Rabbit IgG at 1/20000 dilution Predicted band size: 49 kD Observed band size: 54 kD



Sample: Lane 1: Mouse Cerebrum tissue lysates Lane 2: Mouse Cerebellum tissue lysates Lane 3:

Mouse Testis tissue lysates Lane 4: Mouse Lung tissue lysates Lane 5: Rat Cerebrum tissue lysates  
Lane 6: Rat Cerebellum tissue lysates Lane 7: Rat Testis tissue lysates Lane 8: Human HeLa cell  
lysates Lane 9: Human A431 cell lysates Lane 10: Human SH-SY5Y cell lysates Primary: Anti-GlyR  
alpha 1 + 2 + 3 (AP94037) at 1/1000 dilution Secondary: IRDye800CW Goat Anti-Rabbit IgG at  
1/20000 dilution Predicted band size: 49 kDa Observed band size: 53 kDa

### **GlyR alpha 1 + 2 + 3 Rabbit pAb - Background**

This product as supplied is intended for research use only, not for use in human, therapeutic or diagnostic applications.