

**DIRAS1 Antibody (Center)**  
**Affinity Purified Rabbit Polyclonal Antibody (Pab)**  
**Catalog # AP9402c**

**Specification**

---

**DIRAS1 Antibody (Center) - Product Information**

Application	WB, IHC-P, FC,E
Primary Accession	<a href="#">O95057</a>
Reactivity	Human
Host	Rabbit
Clonality	Polyclonal
Isotype	Rabbit IgG
Calculated MW	22329
Antigen Region	109-136

**DIRAS1 Antibody (Center) - Additional Information**

**Gene ID** 148252

**Other Names**

GTP-binding protein Di-Ras1, Distinct subgroup of the Ras family member 1, Ras-related inhibitor of cell growth, Rig, Small GTP-binding tumor suppressor 1, DIRAS1, GBTS1, RIG

**Target/Specificity**

This DIRAS1 antibody is generated from rabbits immunized with a KLH conjugated synthetic peptide between 109-136 amino acids from the Central region of human DIRAS1.

**Dilution**

WB~~1:1000  
IHC-P~~1:50~100  
FC~~1:10~50

**Format**

Purified polyclonal antibody supplied in PBS with 0.09% (W/V) sodium azide. This antibody is purified through a protein A column, followed by peptide affinity purification.

**Storage**

Maintain refrigerated at 2-8°C for up to 2 weeks. For long term storage store at -20°C in small aliquots to prevent freeze-thaw cycles.

**Precautions**

DIRAS1 Antibody (Center) is for research use only and not for use in diagnostic or therapeutic procedures.

**DIRAS1 Antibody (Center) - Protein Information**

**Name** DIRAS1

**Synonyms** GBTS1, RIG

**Function** Displays low GTPase activity and exists predominantly in the GTP-bound form.

**Cellular Location**

Cell membrane; Lipid-anchor; Cytoplasmic side

**Tissue Location**

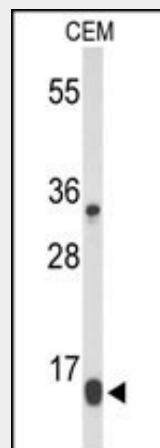
Highly expressed in heart and brain.

**DIRAS1 Antibody (Center) - Protocols**

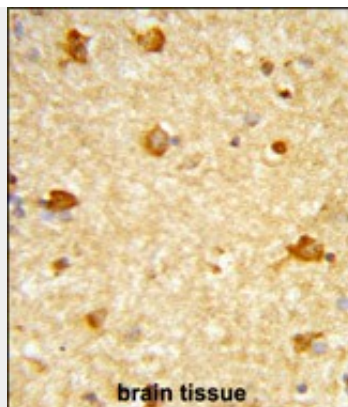
Provided below are standard protocols that you may find useful for product applications.

- [Western Blot](#)
- [Blocking Peptides](#)
- [Dot Blot](#)
- [Immunohistochemistry](#)
- [Immunofluorescence](#)
- [Immunoprecipitation](#)
- [Flow Cytometry](#)
- [Cell Culture](#)

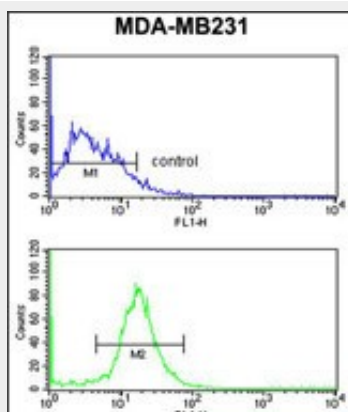
**DIRAS1 Antibody (Center) - Images**



Western blot analysis of DIRAS1 Antibody (Center) (Cat. #AP9402c) in CEM cell line lysates (35ug/lane). DIRAS1 (arrow) was detected using the purified Pab.



Formalin-fixed and paraffin-embedded human brain tissue reacted with DIRAS1 Antibody (Center), which was peroxidase-conjugated to the secondary antibody, followed by DAB staining. This data demonstrates the use of this antibody for immunohistochemistry; clinical relevance has not been evaluated.



DIRAS1 Antibody (Center) (Cat. #AP9402c) flow cytometry analysis of MDA-MB231 cells (bottom histogram) compared to a negative control cell (top histogram). FITC-conjugated goat-anti-rabbit secondary antibodies were used for the analysis.

#### **DIRAS1 Antibody (Center) - Background**

DIRAS1 belongs to a distinct branch of the functionally diverse Ras (see HRAS; MIM 190020) superfamily of monomeric GTPases.

#### **DIRAS1 Antibody (Center) - References**

- Kimura, K., et al. *Genome Res.* 16(1):55-65(2006)
- Kontani, K., et al. *J. Biol. Chem.* 277(43):41070-41078(2002)
- Ellis, C.A., et al. *Proc. Natl. Acad. Sci. U.S.A.* 99(15):9876-9881(2002)