

TUBA3E (Tubulin alpha 3e) (16K16) Mouse Monoclonal antibody
TUBA3E (Tubulin alpha 3e) (16K16) Mouse Monoclonal antibody
Catalog # AP93915**Specification**

TUBA3E (Tubulin alpha 3e) (16K16) Mouse Monoclonal antibody - Product Information

Application	WB, IF
Primary Accession	Q6PEY2
Reactivity	Rat, Human, Mouse
Clonality	Monoclonal
Calculated MW	49859

TUBA3E (Tubulin alpha 3e) (16K16) Mouse Monoclonal antibody - Additional Information

Gene ID 112714

Other Names

Tubulin alpha-3E chain, 3.6.5.-, Alpha-tubulin 3E, Detyrosinated tubulin alpha-3E chain, TUBA3E

Storage Conditions

-20°C

TUBA3E (Tubulin alpha 3e) (16K16) Mouse Monoclonal antibody - Protein Information

Name TUBA3E

Function

Tubulin is the major constituent of microtubules, a cylinder consisting of laterally associated linear protofilaments composed of alpha- and beta-tubulin heterodimers. Microtubules grow by the addition of GTP-tubulin dimers to the microtubule end, where a stabilizing cap forms. Below the cap, tubulin dimers are in GDP-bound state, owing to GTPase activity of alpha-tubulin.

Cellular Location

Cytoplasm, cytoskeleton.

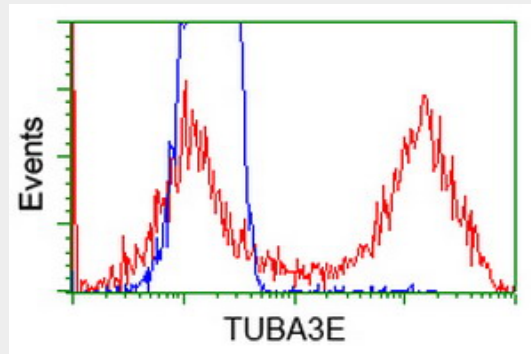
TUBA3E (Tubulin alpha 3e) (16K16) Mouse Monoclonal antibody - Protocols

Provided below are standard protocols that you may find useful for product applications.

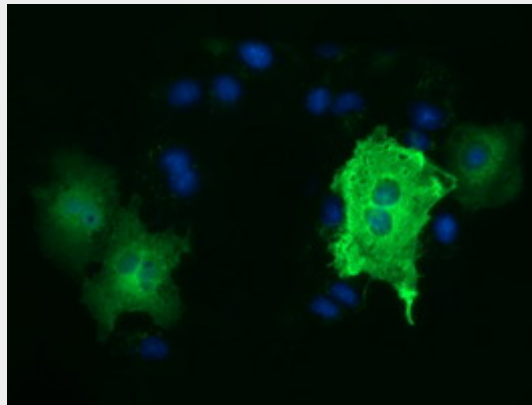
- [Western Blot](#)
- [Blocking Peptides](#)
- [Dot Blot](#)
- [Immunohistochemistry](#)
- [Immunofluorescence](#)
- [Immunoprecipitation](#)
- [Flow Cytometry](#)

- [Cell Culture](#)

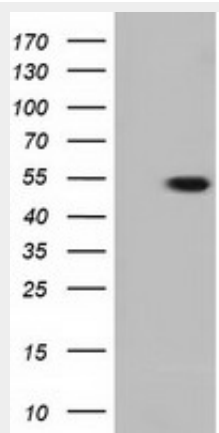
TUBA3E (Tubulin alpha 3e) (16K16) Mouse Monoclonal antibody - Images



HEK293T cells transfected with either overexpress plasmid (Red) or empty vector control plasmid (Blue) were immunostained by anti-TUBA3E antibody (AP93915), and then analyzed by flow cytometry.



Anti-TUBA3E mouse monoclonal antibody (AP93915) immunofluorescent staining of COS7 cells transiently transfected by pCMV6-ENTRY TUBA3E .



HEK293T cells were transfected with the pCMV6-ENTRY control (Left lane) or pCMV6-ENTRY TUBA3E (Right lane) cDNA for 48 hrs and lysed. Equivalent amounts of cell lysates (5 ug per lane) were separated by SDS-PAGE and immunoblotted with anti-TUBA3E. Positive lysates (100ug) and (20ug) can be purchased separately from biodragon.

TUBA3E (Tubulin alpha 3e) (16K16) Mouse Monoclonal antibody - Background

Tubulin is the major constituent of microtubules. It binds two moles of GTP, one at an exchangeable site on the beta chain and one at a non-exchangeable site on the alpha-chain (By similarity).