

BTBD3 (17R1) Mouse Monoclonal antibody
BTBD3 (17R1) Mouse Monoclonal antibody
Catalog # AP93914

Specification

BTBD3 (17R1) Mouse Monoclonal antibody - Product Information

Application	WB
Primary Accession	O9Y2F9
Reactivity	Rat, Human, Mouse
Clonality	Monoclonal
Calculated MW	58420

BTBD3 (17R1) Mouse Monoclonal antibody - Additional Information

Gene ID 22903

Other Names

BTB/POZ domain-containing protein 3, BTBD3, KIAA0952

Storage Conditions

-20°C

BTBD3 (17R1) Mouse Monoclonal antibody - Protein Information

Name BTBD3

Synonyms KIAA0952

Function

Acts as a key regulator of dendritic field orientation during development of sensory cortex. Also directs dendrites toward active axon terminals when ectopically expressed (By similarity).

Cellular Location

Cytoplasm, cytosol. Nucleus. Note=Translocates from the cytosol to the nucleus in response to neuronal activity.

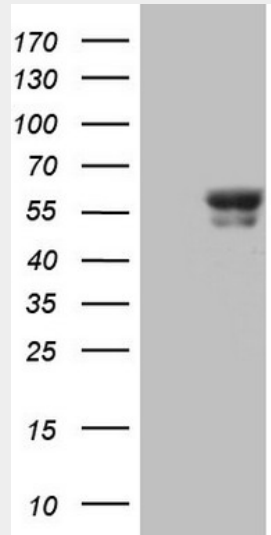
BTBD3 (17R1) Mouse Monoclonal antibody - Protocols

Provided below are standard protocols that you may find useful for product applications.

- [Western Blot](#)
- [Blocking Peptides](#)
- [Dot Blot](#)
- [Immunohistochemistry](#)
- [Immunofluorescence](#)
- [Immunoprecipitation](#)

- [Flow Cytometry](#)
- [Cell Culture](#)

BTBD3 (17R1) Mouse Monoclonal antibody - Images



HEK293T cells were transfected with the pCMV6-ENTRY control (Left lane) or pCMV6-ENTRY BTBD3 (Right lane) cDNA for 48 hrs and lysed. Equivalent amounts of cell lysates (5 ug per lane) were separated by SDS-PAGE and immunoblotted with anti-BTBD3 (Cat# AP93914)(1:2000). Positive lysates (100ug) and (20ug) can be purchased separately from biodragon.

BTBD3 (17R1) Mouse Monoclonal antibody - Background

Acts as a key regulator of dendritic field orientation during development of sensory cortex. Also directs dendrites toward active axon terminals when ectopically expressed. [UniProtKB/Swiss-Prot Function]