

**LRR50 (11E13) Mouse Monoclonal antibody**  
**LRR50 (11E13) Mouse Monoclonal antibody**  
Catalog # AP93913

## Specification

---

### LRR50 (11E13) Mouse Monoclonal antibody - Product Information

Application	WB
Primary Accession	<a href="#">Q8NEP3</a>
Reactivity	Rat, Human, Mouse, Monkey, Dog
Clonality	Monoclonal
Calculated MW	80026

### LRR50 (11E13) Mouse Monoclonal antibody - Additional Information

Gene ID 123872

#### Other Names

Dynein axonemal assembly factor 1, Leucine-rich repeat-containing protein 50, DNAAF1, LRR50

#### Storage Conditions

-20°C

### LRR50 (11E13) Mouse Monoclonal antibody - Protein Information

Name DNAAF1

Synonyms LRR50

#### Function

Cilium-specific protein required for the stability of the ciliary architecture. Plays a role in cytoplasmic preassembly of dynein arms. Involved in regulation of microtubule-based cilia and actin-based brush border microvilli.

#### Cellular Location

Cell projection, cilium. Cytoplasm Cytoplasm, cytoskeleton, spindle pole Note=In HEK293T cells, it is diffusely cytoplasmic and concentrates at the mitotic spindle poles, while in MDCK cells, it localizes in the cilium. In vivo, this protein is probably restricted to the cilium

#### Tissue Location

Mainly expressed in trachea and testis.

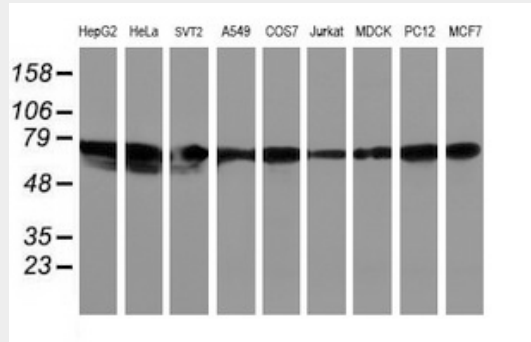
### LRR50 (11E13) Mouse Monoclonal antibody - Protocols

Provided below are standard protocols that you may find useful for product applications.

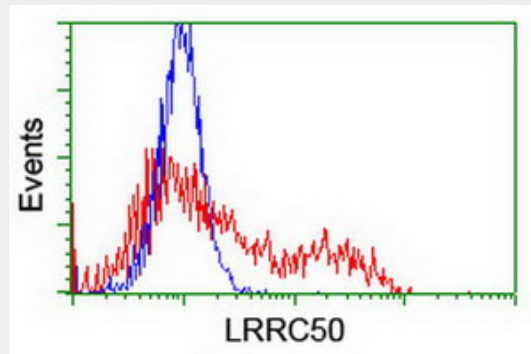
- [Western Blot](#)

- [Blocking Peptides](#)
- [Dot Blot](#)
- [Immunohistochemistry](#)
- [Immunofluorescence](#)
- [Immunoprecipitation](#)
- [Flow Cytometry](#)
- [Cell Culture](#)

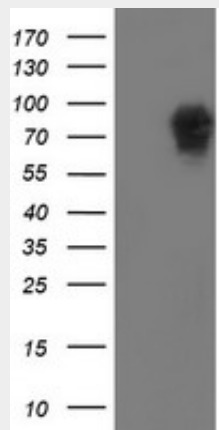
**LRRC50 (11E13) Mouse Monoclonal antibody - Images**



Western blot analysis of extracts (35ug) from 9 different cell lines by using anti-LRRC50 monoclonal antibody (HepG2: human; HeLa: human; SVT2: mouse; A549: human; COS7: monkey; Jurkat: human; MDCK: canine; PC12: rat; MCF7: human).



HEK293T cells transfected with either overexpress plasmid (Red) or empty vector control plasmid (Blue) were immunostained by anti-LRRC50 antibody (AP93913), and then analyzed by flow cytometry.



HEK293T cells were transfected with the pCMV6-ENTRY control (Left lane) or pCMV6-ENTRY LRRC50 (Right lane).

LRRC50 (Right lane) cDNA for 48 hrs and lysed. Equivalent amounts of cell lysates (5 ug per lane) were separated by SDS-PAGE and immunoblotted with anti-LRRC50(Cat# AP93913). Positive lysates (100ug) and (20ug) can be purchased separately from biodragon.

#### **LRRC50 (11E13) Mouse Monoclonal antibody - Background**

The protein encoded by this gene is cilium-specific and is required for the stability of the ciliary architecture. It is involved in the regulation of microtubule-based cilia and actin-based brush border microvilli. Mutations in this gene are associated with primary ciliary dyskinesia-13. COMPLETENESS: complete on the 3' end.