

LSM11 (2F15) Mouse Monoclonal antibody
LSM11 (2F15) Mouse Monoclonal antibody
Catalog # AP93907**Specification**

LSM11 (2F15) Mouse Monoclonal antibody - Product Information

Application	WB
Primary Accession	P83369
Reactivity	Rat, Human, Mouse
Clonality	Monoclonal
Calculated MW	39500

LSM11 (2F15) Mouse Monoclonal antibody - Additional Information**Gene ID** 134353**Other Names**

U7 snRNA-associated Sm-like protein LSm11, LSM11 {ECO:0000303|PubMed:12975319, ECO:0000312|HGNC:HGNC:30860}

Storage Conditions

-20°C

LSM11 (2F15) Mouse Monoclonal antibody - Protein Information**Name** LSM11 {ECO:0000303|PubMed:12975319, ECO:0000312|HGNC:HGNC:30860}**Function**

Component of the U7 snRNP complex that is involved in the histone 3'-end pre-mRNA processing (PubMed:11574479, PubMed:16914750, PubMed:33230297). Increases U7 snRNA levels but not histone 3'-end pre- mRNA processing activity, when overexpressed (PubMed:11574479, PubMed:16914750). Required for cell cycle progression from G1 to S phases (By similarity). Binds specifically to the Sm-binding site of U7 snRNA (PubMed:11574479, PubMed:16914750).

Cellular Location

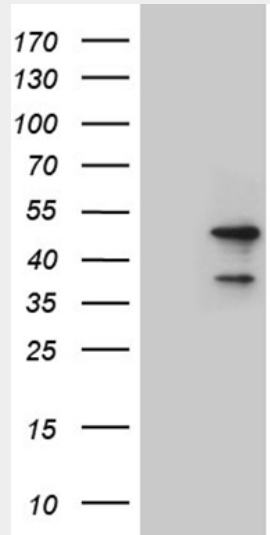
Nucleus.

LSM11 (2F15) Mouse Monoclonal antibody - Protocols

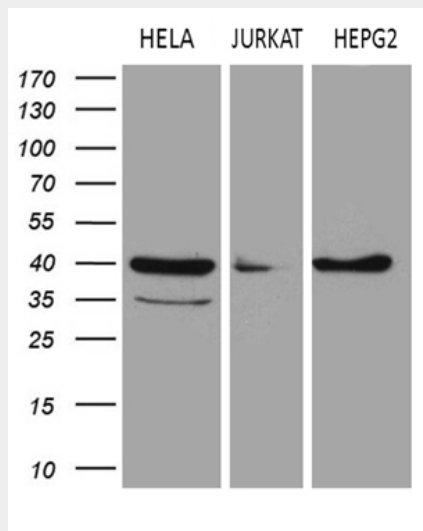
Provided below are standard protocols that you may find useful for product applications.

- [Western Blot](#)
- [Blocking Peptides](#)
- [Dot Blot](#)
- [Immunohistochemistry](#)
- [Immunofluorescence](#)
- [Immunoprecipitation](#)
- [Flow Cytometry](#)
- [Cell Culture](#)

LSM11 (2F15) Mouse Monoclonal antibody - Images



HEK293T cells were transfected with the pCMV6-ENTRY control (Left lane) or pCMV6-ENTRY LSM11 (Right lane) cDNA for 48 hrs and lysed. Equivalent amounts of cell lysates (5 ug per lane) were separated by SDS-PAGE and immunoblotted with anti-LSM11 (1:2000). Positive lysates (100ug) and (20ug) can be purchased separately from biodragon.



Western blot analysis of extracts (35ug) from 3 different cell lines by using anti-LSM11 monoclonal antibody (1:500).