

HSCB (11S6) Mouse Monoclonal antibody
HSCB (11S6) Mouse Monoclonal antibody
Catalog # AP93906**Specification**

HSCB (11S6) Mouse Monoclonal antibody - Product Information

Application	WB, IHC
Primary Accession	Q8IWL3
Reactivity	Rat, Human, Mouse, Monkey, Dog
Clonality	Monoclonal
Calculated MW	27422

HSCB (11S6) Mouse Monoclonal antibody - Additional Information**Gene ID** 150274**Other Names**

Iron-sulfur cluster co-chaperone protein HscB, Dnaj homolog subfamily C member 20, Iron-sulfur cluster co-chaperone protein HscB, cytoplasmic, C-HSC20, Iron-sulfur cluster co-chaperone protein HscB, mitochondrial, HSCB (http://www.genenames.org/cgi-bin/gene_symbol_report?hgnc_id=28913 target="_blank">HGNC:28913), DNAJC20, HSC20

Storage Conditions

-20°C

HSCB (11S6) Mouse Monoclonal antibody - Protein Information**Name** HSCB ([HGNC:28913](#))**Synonyms** DNAJC20, HSC20**Function**

[Iron-sulfur cluster co-chaperone protein HscB, mitochondrial]: Acts as a co-chaperone in iron-sulfur cluster assembly in mitochondria (PubMed:<http://www.uniprot.org/citations/20668094> target="_blank">20668094). Required for incorporation of iron-sulfur clusters into SDHB, the iron-sulfur protein subunit of succinate dehydrogenase that is involved in complex II of the mitochondrial electron transport chain (PubMed:<http://www.uniprot.org/citations/26749241> target="_blank">26749241). Recruited to SDHB by interaction with SDHAF1 which first binds SDHB and then recruits the iron-sulfur transfer complex formed by HSC20, HSPA9 and ISCU through direct binding to HSC20 (PubMed:<http://www.uniprot.org/citations/26749241> target="_blank">26749241). Plays an essential role in hematopoiesis (By similarity).

Cellular Location

[Iron-sulfur cluster co-chaperone protein HscB, cytoplasmic]: Cytoplasm

Tissue Location

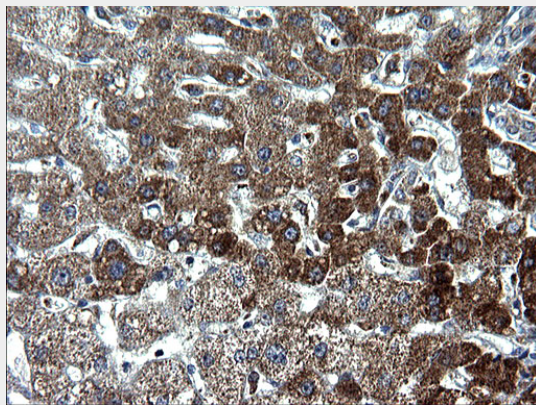
Expressed in lung, brain, stomach, spleen, ovary, testis, liver, muscle and heart.

HSCB (1156) Mouse Monoclonal antibody - Protocols

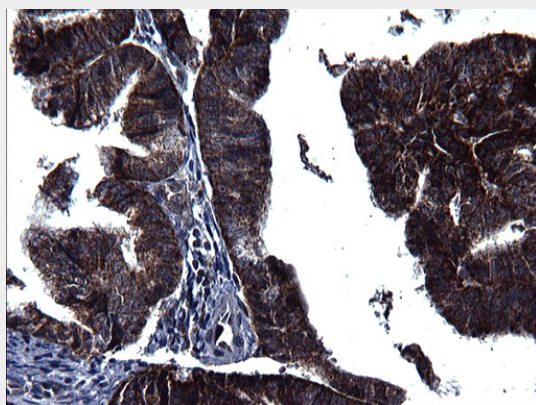
Provided below are standard protocols that you may find useful for product applications.

- [Western Blot](#)
- [Blocking Peptides](#)
- [Dot Blot](#)
- [Immunohistochemistry](#)
- [Immunofluorescence](#)
- [Immunoprecipitation](#)
- [Flow Cytometry](#)
- [Cell Culture](#)

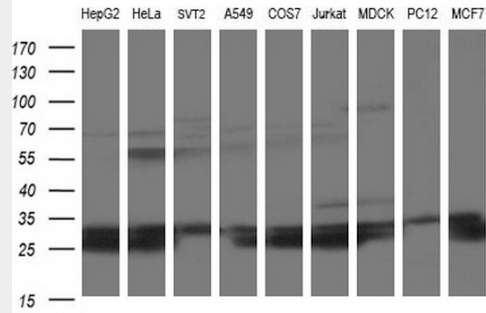
HSCB (1156) Mouse Monoclonal antibody - Images



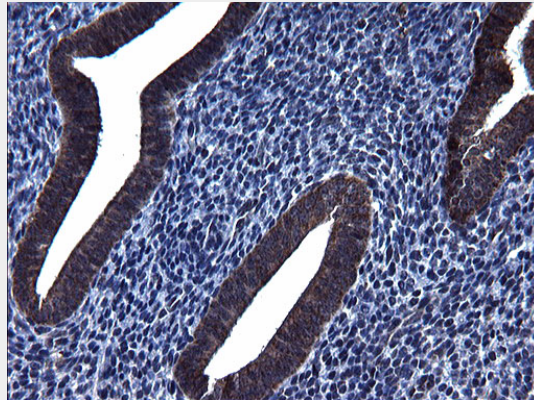
Immunohistochemical staining of paraffin-embedded Human liver tissue within the normal limits using anti-HSCB mouse monoclonal antibody. (Heat-induced epitope retrieval by 1mM EDTA in 10mM Tris, pH8.5, 120°C for 3min, AP93906)



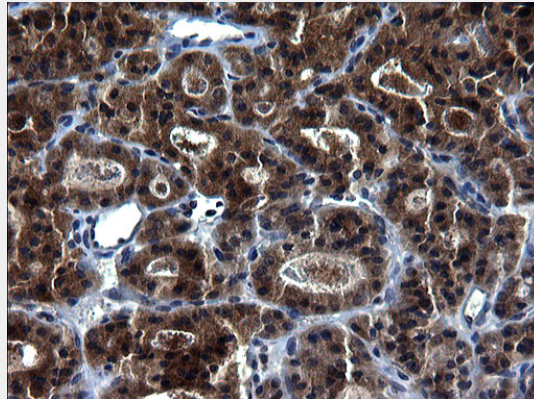
Immunohistochemical staining of paraffin-embedded Adenocarcinoma of Human endometrium tissue using anti-HSCB mouse monoclonal antibody. (Heat-induced epitope retrieval by 1mM EDTA in 10mM Tris, pH8.5, 120°C for 3min, AP93906)



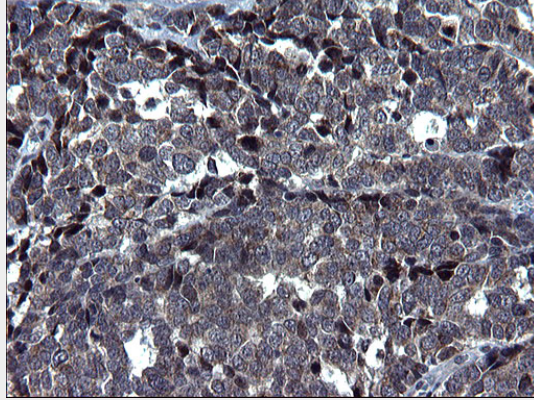
Western blot analysis of extracts (35ug) from 9 different cell lines by using anti-HSCB monoclonal antibody (HepG2: human; HeLa: human; SVT2: mouse; A549: human; COS7: monkey; Jurkat: human; MDCK: canine; PC12: rat; MCF7: human).



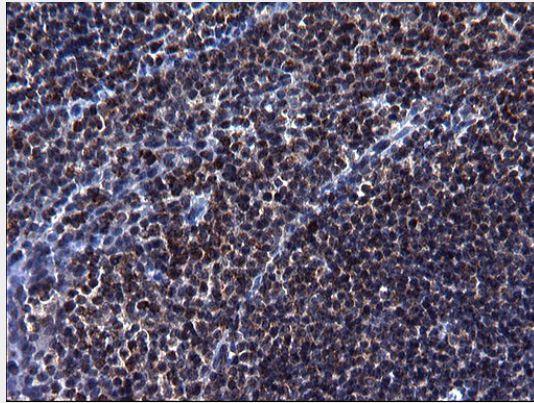
Immunohistochemical staining of paraffin-embedded Human endometrium tissue within the normal limits using anti-HSCB mouse monoclonal antibody. (Heat-induced epitope retrieval by 1mM EDTA in 10mM Tris, pH8.5, 120°C for 3min, AP93906)



Immunohistochemical staining of paraffin-embedded Carcinoma of Human thyroid tissue using anti-HSCB mouse monoclonal antibody. (Heat-induced epitope retrieval by 1mM EDTA in 10mM Tris, pH8.5, 120°C for 3min, AP93906)



Immunohistochemical staining of paraffin-embedded Adenocarcinoma of Human colon tissue using anti-HSCB mouse monoclonal antibody. (Heat-induced epitope retrieval by 1mM EDTA in 10mM Tris, pH8.5, 120°C for 3min, AP93906)



Immunohistochemical staining of paraffin-embedded Human lymph node tissue within the normal limits using anti-HSCB mouse monoclonal antibody. (Heat-induced epitope retrieval by 1mM EDTA in 10mM Tris, pH8.5, 120°C for 3min, AP93906)