

HSCB (8B9) Mouse Monoclonal antibody
HSCB (8B9) Mouse Monoclonal antibody
Catalog # AP93905**Specification**

HSCB (8B9) Mouse Monoclonal antibody - Product Information

Application	WB
Primary Accession	O8IWL3
Reactivity	Human
Clonality	Monoclonal
Calculated MW	27422

HSCB (8B9) Mouse Monoclonal antibody - Additional Information**Gene ID** 150274**Other Names**

Iron-sulfur cluster co-chaperone protein HscB, Dnaj homolog subfamily C member 20, Iron-sulfur cluster co-chaperone protein HscB, cytoplasmic, C-HSC20, Iron-sulfur cluster co-chaperone protein HscB, mitochondrial, HSCB (http://www.genenames.org/cgi-bin/gene_symbol_report?hgnc_id=28913 target="_blank">HGNC:28913), DNAJC20, HSC20

Storage Conditions

-20°C

HSCB (8B9) Mouse Monoclonal antibody - Protein Information**Name** HSCB ([HGNC:28913](#))**Synonyms** DNAJC20, HSC20**Function**

[Iron-sulfur cluster co-chaperone protein HscB, mitochondrial]: Acts as a co-chaperone in iron-sulfur cluster assembly in mitochondria (PubMed:<http://www.uniprot.org/citations/20668094> target="_blank">20668094). Required for incorporation of iron-sulfur clusters into SDHB, the iron-sulfur protein subunit of succinate dehydrogenase that is involved in complex II of the mitochondrial electron transport chain (PubMed:<http://www.uniprot.org/citations/26749241> target="_blank">26749241). Recruited to SDHB by interaction with SDHAF1 which first binds SDHB and then recruits the iron-sulfur transfer complex formed by HSC20, HSPA9 and ISCU through direct binding to HSC20 (PubMed:<http://www.uniprot.org/citations/26749241> target="_blank">26749241). Plays an essential role in hematopoiesis (By similarity).

Cellular Location

[Iron-sulfur cluster co-chaperone protein HscB, cytoplasmic]: Cytoplasm

Tissue Location

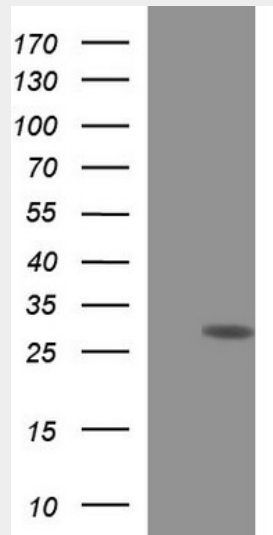
Expressed in lung, brain, stomach, spleen, ovary, testis, liver, muscle and heart.

HSCB (8B9) Mouse Monoclonal antibody - Protocols

Provided below are standard protocols that you may find useful for product applications.

- [Western Blot](#)
- [Blocking Peptides](#)
- [Dot Blot](#)
- [Immunohistochemistry](#)
- [Immunofluorescence](#)
- [Immunoprecipitation](#)
- [Flow Cytometry](#)
- [Cell Culture](#)

HSCB (8B9) Mouse Monoclonal antibody - Images



HEK293T cells were transfected with the pCMV6-ENTRY control (Left lane) or pCMV6-ENTRY HSCB (Right lane) cDNA for 48 hrs and lysed. Equivalent amounts of cell lysates (5 ug per lane) were separated by SDS-PAGE and immunoblotted with anti-HSCB. Positive lysates (100ug) and (20ug) can be purchased separately from biodragon.