

**POLR2J2 (10E16) Mouse Monoclonal antibody**  
**POLR2J2 (10E16) Mouse Monoclonal antibody**  
**Catalog # AP93898**

## Specification

---

### POLR2J2 (10E16) Mouse Monoclonal antibody - Product Information

Application	WB, IHC, IF
Primary Accession	<a href="#">O9GZM3</a>
Reactivity	Human
Clonality	Monoclonal
Calculated MW	13088

### POLR2J2 (10E16) Mouse Monoclonal antibody - Additional Information

**Gene ID** 246721;548644

#### Other Names

DNA-directed RNA polymerase II subunit RPB11-b1, RNA polymerase II subunit B11-b1, RPB11b1, DNA-directed RNA polymerase II subunit J2, POLR2J2

#### Storage Conditions

-20°C

### POLR2J2 (10E16) Mouse Monoclonal antibody - Protein Information

**Name** POLR2J2

#### Function

DNA-dependent RNA polymerase catalyzes the transcription of DNA into RNA using the four ribonucleoside triphosphates as substrates. Component of RNA polymerase II which synthesizes mRNA precursors and many functional non-coding RNAs. Pol II is the central component of the basal RNA polymerase II transcription machinery. It is composed of mobile elements that move relative to each other. RPB11 is part of the core element with the central large cleft (By similarity).

#### Cellular Location

Nucleus.

#### Tissue Location

Ubiquitously expressed.

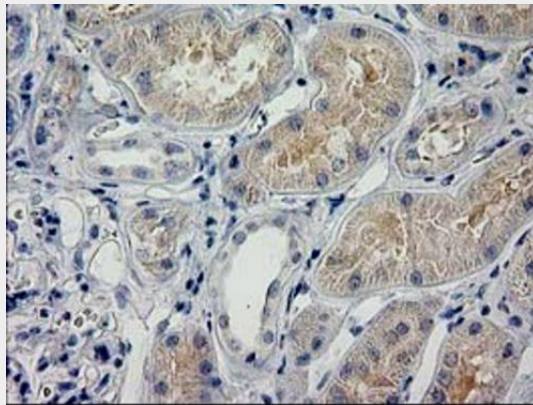
### POLR2J2 (10E16) Mouse Monoclonal antibody - Protocols

Provided below are standard protocols that you may find useful for product applications.

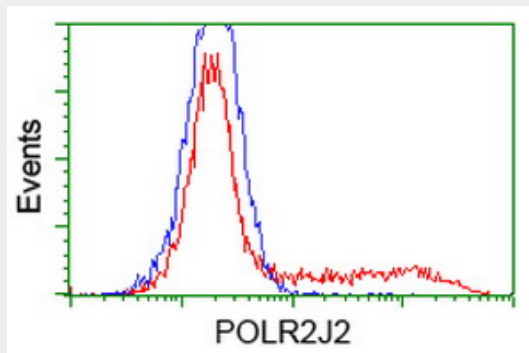
- [Western Blot](#)
- [Blocking Peptides](#)

- [Dot Blot](#)
- [Immunohistochemistry](#)
- [Immunofluorescence](#)
- [Immunoprecipitation](#)
- [Flow Cytometry](#)
- [Cell Culture](#)

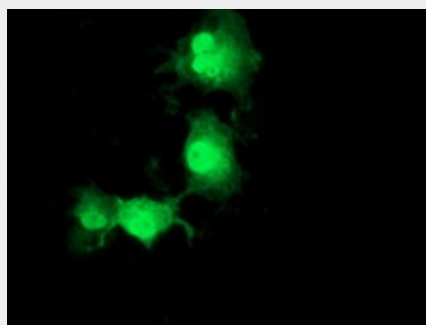
### **POLR2J2 (10E16) Mouse Monoclonal antibody - Images**



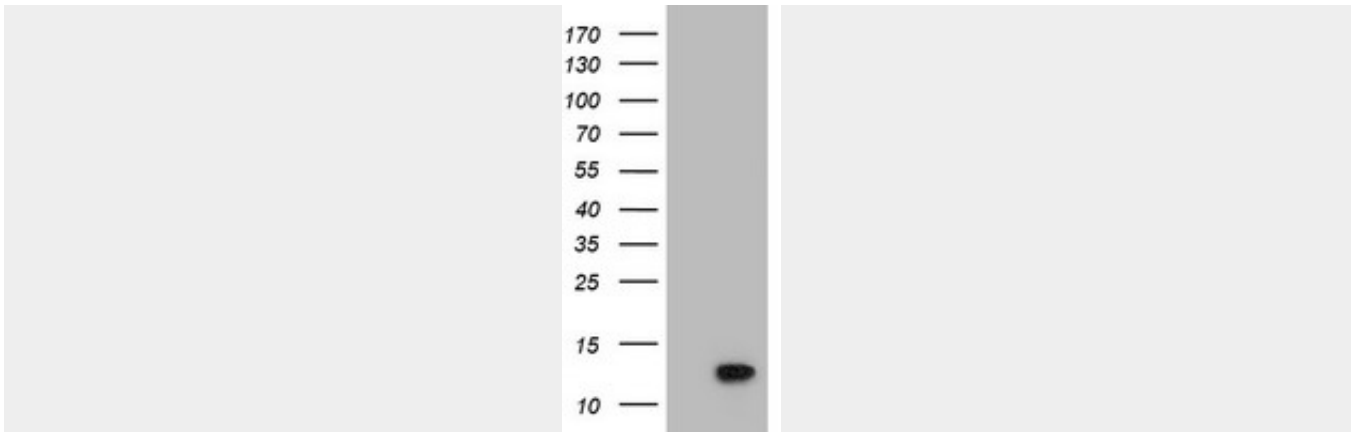
Immunohistochemical staining of paraffin-embedded Human Kidney tissue within the normal limits using anti-POLR2J2 mouse monoclonal antibody. (Heat-induced epitope retrieval by 10mM citric buffer, pH6.0, 100°C for 10min, AP93898)



HEK293T cells transfected with either overexpress plasmid (Red) or empty vector control plasmid (Blue) were immunostained by anti-POLR2J2 antibody (AP93898), and then analyzed by flow cytometry.



Anti-POLR2J2 mouse monoclonal antibody (AP93898) immunofluorescent staining of COS7 cells transiently transfected by pCMV6-ENTRY POLR2J2 .



HEK293T cells were transfected with the pCMV6-ENTRY control (Left lane) or pCMV6-ENTRY POLR2J2 (Right lane) cDNA for 48 hrs and lysed. Equivalent amounts of cell lysates (5 ug per lane) were separated by SDS-PAGE and immunoblotted with anti-POLR2J2 (Cat# AP93898). Positive lysates (100ug) and (20ug) can be purchased separately from biodragon.

#### **POLR2J2 (10E16) Mouse Monoclonal antibody - Background**

This gene is a member of the RNA polymerase II subunit 11 gene family, which includes three genes in a cluster on chromosome 7q22.1 and a pseudogene on chromosome 7p13. The founding member of this family, DNA directed RNA polymerase II polypeptide J, has been shown to encode a subunit of RNA polymerase II, the polymerase responsible for synthesizing messenger RNA in eukaryotes. This locus produces multiple, alternatively spliced transcripts that potentially express isoforms with distinct C-termini compared to DNA directed RNA polymerase II polypeptide J. Most or all variants are spliced to include additional non-coding exons at the 3' end which makes them candidates for nonsense-mediated decay (NMD). Consequently, it is not known if this locus expresses a protein or proteins in vivo. [provided by RefSeq]