

**ASCC2 (13J8) Mouse Monoclonal antibody**  
**ASCC2 (13J8) Mouse Monoclonal antibody**  
**Catalog # AP93894****Specification**

---

**ASCC2 (13J8) Mouse Monoclonal antibody - Product Information**

Application	WB, IF
Primary Accession	<a href="#">O9H1I8</a>
Reactivity	Rat, Human, Mouse
Clonality	Monoclonal
Calculated MW	86360

**ASCC2 (13J8) Mouse Monoclonal antibody - Additional Information****Gene ID** 84164**Other Names**

Activating signal cointegrator 1 complex subunit 2, ASC-1 complex subunit p100, Trip4 complex subunit p100, ASCC2, ASC1P100, RQT3 {ECO:0000303|PubMed:32099016}

**Storage Conditions**

-20°C

**ASCC2 (13J8) Mouse Monoclonal antibody - Protein Information****Name** ASCC2**Synonyms** ASC1P100, RQT3 {ECO:0000303|PubMed:32099}**Function**

Ubiquitin-binding protein involved in DNA repair and rescue of stalled ribosomes (PubMed: [29144457](http://www.uniprot.org/citations/29144457)), PubMed: [32099016](http://www.uniprot.org/citations/32099016), PubMed: [32579943](http://www.uniprot.org/citations/32579943), PubMed: [36302773](http://www.uniprot.org/citations/36302773)). Plays a role in DNA damage repair as component of the ASCC complex (PubMed: [29144457](http://www.uniprot.org/citations/29144457)). Recruits ASCC3 and ALKBH3 to sites of DNA damage by binding to polyubiquitinated proteins that have 'Lys-63'-linked polyubiquitin chains (PubMed: [29144457](http://www.uniprot.org/citations/29144457)). Part of the ASC-1 complex that enhances NF-kappa-B, SRF and AP1 transactivation (PubMed: [12077347](http://www.uniprot.org/citations/12077347)). Involved in activation of the ribosome quality control (RQC) pathway, a pathway that degrades nascent peptide chains during problematic translation (PubMed: [32099016](http://www.uniprot.org/citations/32099016), PubMed: [32579943](http://www.uniprot.org/citations/32579943), PubMed: [36302773](http://www.uniprot.org/citations/36302773)). Specifically recognizes and binds RPS20/uS10 ubiquitinated by ZNF598, promoting recruitment of the RQT (ribosome quality control trigger) complex on stalled ribosomes, followed by disassembly

of stalled ribosomes (PubMed:<a href="http://www.uniprot.org/citations/36302773" target="\_blank">36302773</a>).

#### Cellular Location

Nucleus. Nucleus speckle Note=Colocalizes with the spliceosomal components PRPF8 and SNRNP200/BRR2 in nuclear foci when cells have been exposed to alkylating agents that cause DNA damage. Colocalizes with RNF113A and 'Lys-63'-linked polyubiquitinated proteins, ALKBH3 and ASCC3 in nuclear foci when cells have been exposed to alkylating agents that cause DNA damage.

#### Tissue Location

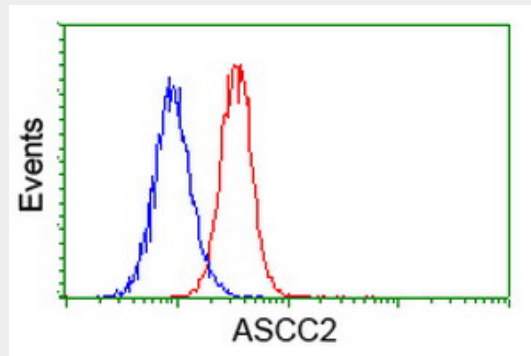
Ubiquitous..

### ASCC2 (13J8) Mouse Monoclonal antibody - Protocols

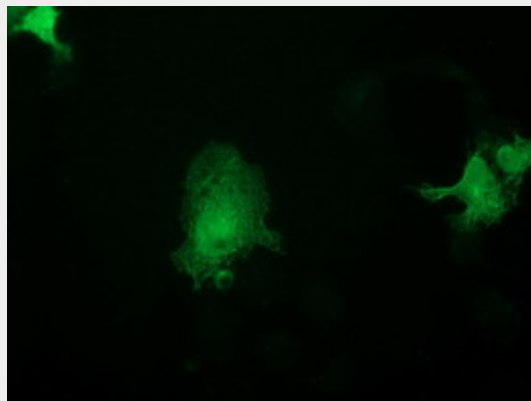
Provided below are standard protocols that you may find useful for product applications.

- [Western Blot](#)
- [Blocking Peptides](#)
- [Dot Blot](#)
- [Immunohistochemistry](#)
- [Immunofluorescence](#)
- [Immunoprecipitation](#)
- [Flow Cytometry](#)
- [Cell Culture](#)

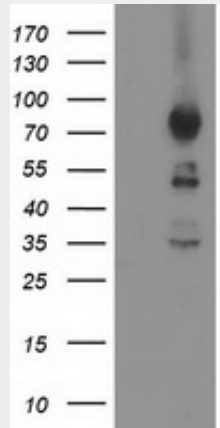
### ASCC2 (13J8) Mouse Monoclonal antibody - Images



Flow cytometric Analysis of Hela cells, using anti-ASCC2 antibody (AP93894), (Red), compared to a nonspecific negative control antibody , (Blue).



Anti-ASCC2 mouse monoclonal antibody (AP93894) immunofluorescent staining of COS7 cells transiently transfected by pCMV6-ENTRY ASCC2.



HEK293T cells were transfected with the pCMV6-ENTRY control (Left lane) or pCMV6-ENTRY ASCC2 (Right lane) cDNA for 48 hrs and lysed. Equivalent amounts of cell lysates (5 ug per lane) were separated by SDS-PAGE and immunoblotted with anti-ASCC2 (Cat# AP93894). Positive lysates (100ug) and (20ug) can be purchased separately from biodragon.