

**KBTBD4 (5G8) Mouse Monoclonal antibody**  
**KBTBD4 (5G8) Mouse Monoclonal antibody**  
Catalog # AP93883**Specification**

---

**KBTBD4 (5G8) Mouse Monoclonal antibody - Product Information**

Application	WB, IHC
Primary Accession	<a href="#">O9NVX7</a>
Reactivity	Human, Mouse
Clonality	Monoclonal
Calculated MW	59904

**KBTBD4 (5G8) Mouse Monoclonal antibody - Additional Information****Gene ID** 55709**Other Names**

Kelch repeat and BTB domain-containing protein 4, BTB and kelch domain-containing protein 4, KBTBD4, BKLHD4

**Storage Conditions**

-20°C

**KBTBD4 (5G8) Mouse Monoclonal antibody - Protein Information****Name** KBTBD4**Synonyms** BKLHD4**Function**

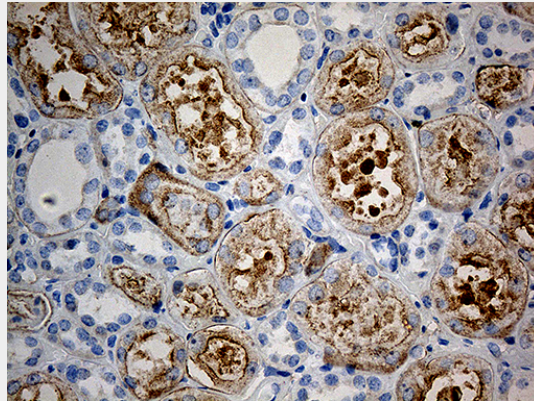
Substrate-specific adapter of a BCR (BTB-CUL3-RBX1) E3 ubiquitin ligase complex which targets CoREST corepressor complex components RCOR1, KDM1A/LSD1 and HDAC2 for proteasomal degradation (PubMed: [33417871](http://www.uniprot.org/citations/33417871)). RCOR1 is likely to be the primary target while degradation of KDM1A and HDAC2 is likely due to their association with RCOR1 (PubMed: [33417871](http://www.uniprot.org/citations/33417871)). Also targets RCOR3, MIER2 and MIER3 for proteasomal degradation as well as associated proteins ZNF217 and RREB1 (PubMed: [36997086](http://www.uniprot.org/citations/36997086)). Degradation is dependent on the presence of an ELM2 domain in the target proteins (PubMed: [36997086](http://www.uniprot.org/citations/36997086)).

**KBTBD4 (5G8) Mouse Monoclonal antibody - Protocols**

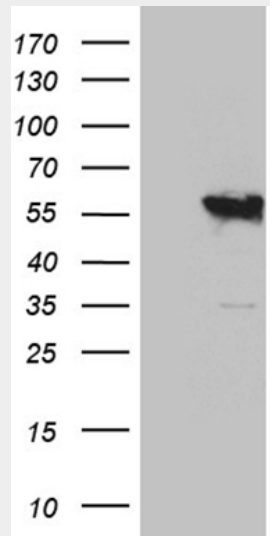
Provided below are standard protocols that you may find useful for product applications.

- [Western Blot](#)
- [Blocking Peptides](#)
- [Dot Blot](#)
- [Immunohistochemistry](#)
- [Immunofluorescence](#)
- [Immunoprecipitation](#)
- [Flow Cytometry](#)
- [Cell Culture](#)

#### **KBTBD4 (5G8) Mouse Monoclonal antibody - Images**



Immunohistochemical staining of paraffin-embedded Human Kidney tissue within the normal limits using anti-KBTBD4 mouse monoclonal antibody. (Heat-induced epitope retrieval by 1mM EDTA in 10mM Tris buffer (pH8.5) at 120°C for 3min, AP93883) (1:500)



HEK293T cells were transfected with the pCMV6-ENTRY control (Left lane) or pCMV6-ENTRY KBTBD4 (Right lane) cDNA for 48 hrs and lysed. Equivalent amounts of cell lysates (5 ug per lane) were separated by SDS-PAGE and immunoblotted with anti-KBTBD4 antibody (Cat# AP93883). Positive lysates (100ug) and (20ug) can be purchased separately from biodragon.