

SCHIP1 (3X11) Mouse Monoclonal antibody
SCHIP1 (3X11) Mouse Monoclonal antibody
Catalog # AP93876

Specification

SCHIP1 (3X11) Mouse Monoclonal antibody - Product Information

Application	WB, IF
Primary Accession	P0DPB3
Reactivity	Human, Mouse
Clonality	Monoclonal
Calculated MW	53480

SCHIP1 (3X11) Mouse Monoclonal antibody - Additional Information

Gene ID 29970

Other Names

Schwannomin-interacting protein 1 {ECO:0000312|HGNC:HGNC:15678}, SCHIP-1, SCHIP1 ([HGNC:15678](http://www.genenames.org/cgi-bin/gene_symbol_report?hgnc_id=15678))

Storage Conditions

-20°C

SCHIP1 (3X11) Mouse Monoclonal antibody - Protein Information

Name SCHIP1 ([HGNC:15678](#))

Cellular Location

Cytoplasm.

Tissue Location

Preferentially expressed in brain, skeletal muscles and heart. Also expressed in detected in pancreas, kidney, liver, lung, and placenta.

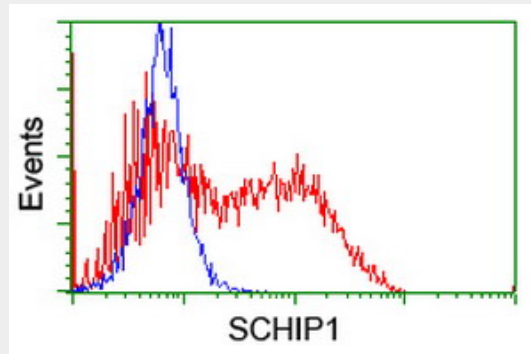
SCHIP1 (3X11) Mouse Monoclonal antibody - Protocols

Provided below are standard protocols that you may find useful for product applications.

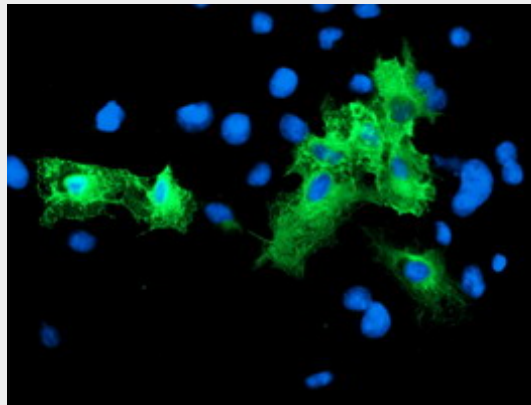
- [Western Blot](#)
- [Blocking Peptides](#)
- [Dot Blot](#)
- [Immunohistochemistry](#)
- [Immunofluorescence](#)
- [Immunoprecipitation](#)
- [Flow Cytometry](#)

- [Cell Culture](#)

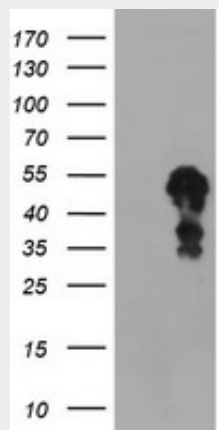
SCHIP1 (3X11) Mouse Monoclonal antibody - Images



HEK293T cells transfected with either overexpress plasmid (Red) or empty vector control plasmid (Blue) were immunostained by anti-SCHIP1 antibody (AP93876), and then analyzed by flow cytometry.



Anti-SCHIP1 mouse monoclonal antibody (AP93876) immunofluorescent staining of COS7 cells transiently transfected by pCMV6-ENTRY SCHIP1 .



HEK293T cells were transfected with the pCMV6-ENTRY control (Left lane) or pCMV6-ENTRY SCHIP1 (Right lane) cDNA for 48 hrs and lysed. Equivalent amounts of cell lysates (5 ug per lane) were separated by SDS-PAGE and immunoblotted with anti-SCHIP1. Positive lysates (100ug) and (20ug) can be purchased separately from biodragon.