

SSU72 (17R14) Mouse Monoclonal antibody
SSU72 (17R14) Mouse Monoclonal antibody
Catalog # AP93872

Specification

SSU72 (17R14) Mouse Monoclonal antibody - Product Information

Application	WB, IHC
Primary Accession	O9NP77
Reactivity	Rat, Human, Mouse
Clonality	Monoclonal
Calculated MW	22574

SSU72 (17R14) Mouse Monoclonal antibody - Additional Information

Gene ID 29101

Other Names

RNA polymerase II subunit A C-terminal domain phosphatase SSU72, CTD phosphatase SSU72, 3.1.3.16, SSU72

Storage Conditions

-20°C

SSU72 (17R14) Mouse Monoclonal antibody - Protein Information

Name SSU72

Function

Protein phosphatase that catalyzes the dephosphorylation of the C-terminal domain of RNA polymerase II. Plays a role in RNA processing and termination. Plays a role in pre-mRNA polyadenylation via its interaction with SYMPK.

Cellular Location

Nucleus. Cytoplasm. Note=Predominantly in the cytosol

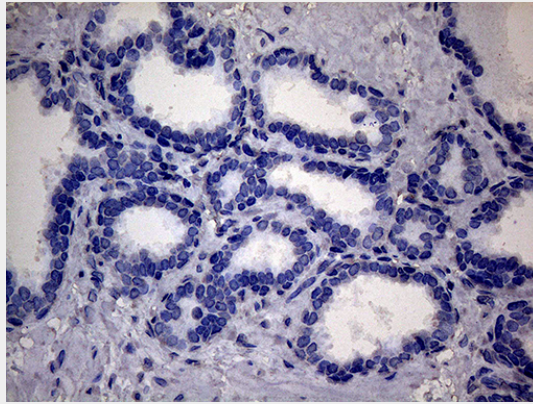
SSU72 (17R14) Mouse Monoclonal antibody - Protocols

Provided below are standard protocols that you may find useful for product applications.

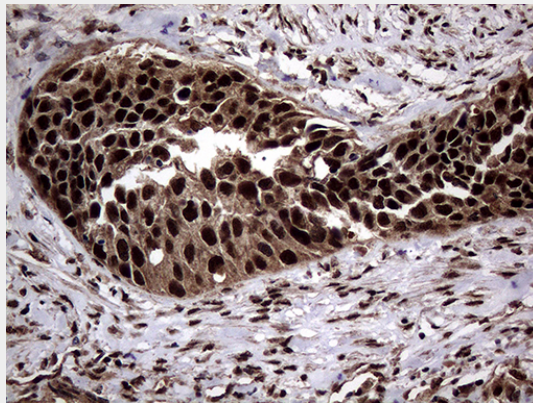
- [Western Blot](#)
- [Blocking Peptides](#)
- [Dot Blot](#)
- [Immunohistochemistry](#)
- [Immunofluorescence](#)
- [Immunoprecipitation](#)
- [Flow Cytometry](#)

- [Cell Culture](#)

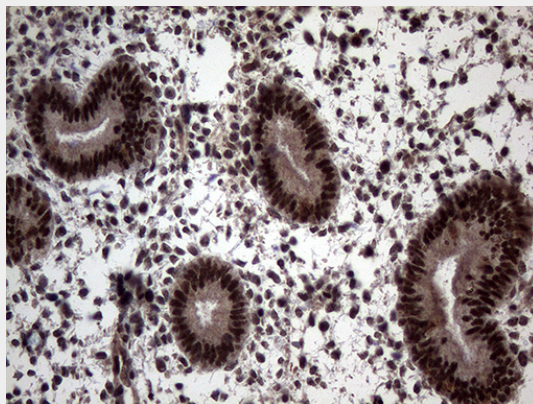
SSU72 (17R14) Mouse Monoclonal antibody - Images



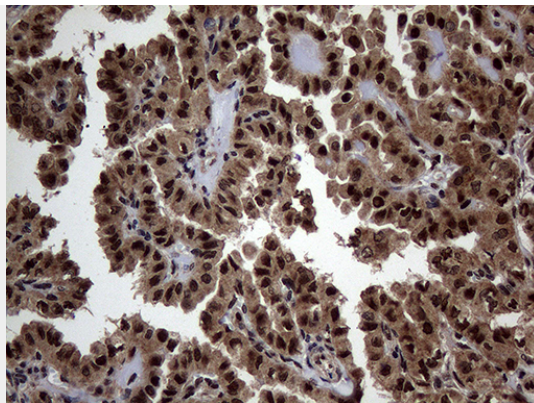
Immunohistochemical staining of paraffin-embedded Human prostate tissue within the normal limits using anti-SSU72 mouse monoclonal antibody. This figure shows negative staining. (Heat-induced epitope retrieval by 1mM EDTA in 10mM Tris buffer (pH8.5) at 120°C for 3min, AP93872) (1:500)



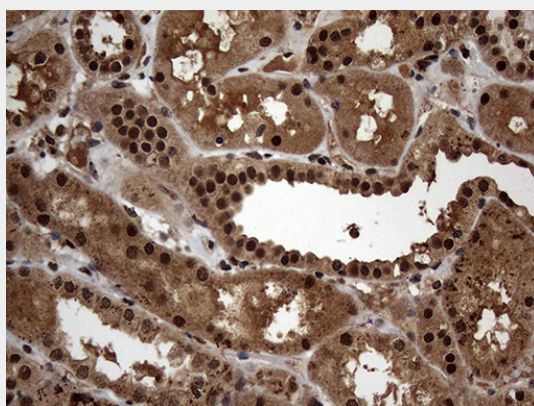
Immunohistochemical staining of paraffin-embedded Carcinoma of Human kidney tissue using anti-SSU72 mouse monoclonal antibody. (Heat-induced epitope retrieval by 1mM EDTA in 10mM Tris buffer (pH8.5) at 120°C for 3min, AP93872) (1:500)



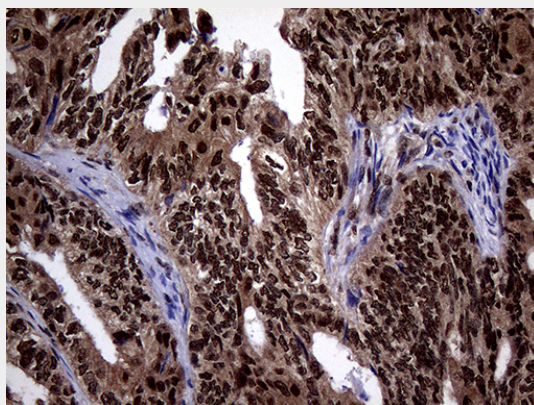
Immunohistochemical staining of paraffin-embedded Human endometrium tissue within the normal limits using anti-SSU72 mouse monoclonal antibody. (Heat-induced epitope retrieval by 1mM EDTA in 10mM Tris buffer (pH8.5) at 120°C for 3min, AP93872) (1:500)



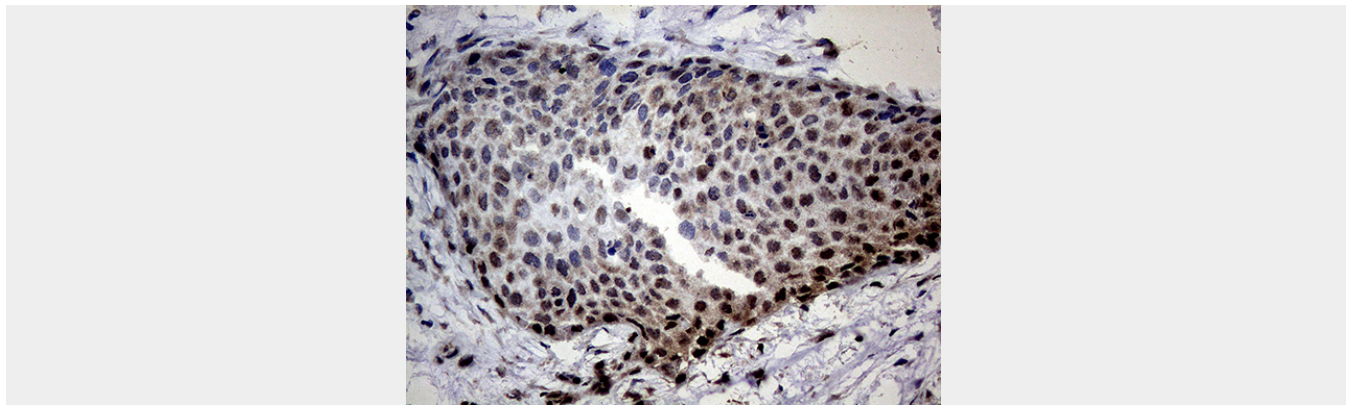
Immunohistochemical staining of paraffin-embedded Carcinoma of Human thyroid tissue using anti-SSU72 mouse monoclonal antibody. (Heat-induced epitope retrieval by 1mM EDTA in 10mM Tris buffer (pH8.5) at 120°C for 3min, AP93872) (1:500)



Immunohistochemical staining of paraffin-embedded Human Kidney tissue within the normal limits using anti-SSU72 mouse monoclonal antibody. (Heat-induced epitope retrieval by 1mM EDTA in 10mM Tris buffer (pH8.5) at 120°C for 3min, AP93872) (1:500)



Immunohistochemical staining of paraffin-embedded Adenocarcinoma of Human ovary tissue using anti-SSU72 mouse monoclonal antibody. (Heat-induced epitope retrieval by 1mM EDTA in 10mM Tris buffer (pH8.5) at 120°C for 3min, AP93872) (1:500)



Immunohistochemical staining of paraffin-embedded Carcinoma of Human bladder tissue using anti-SSU72 mouse monoclonal antibody. (Heat-induced epitope retrieval by 1mM EDTA in 10mM Tris buffer (pH8.5) at 120°C for 3min, AP93872) (1:500)