

SSU72 (11E17) Mouse Monoclonal antibody
SSU72 (11E17) Mouse Monoclonal antibody
Catalog # AP93871**Specification**

SSU72 (11E17) Mouse Monoclonal antibody - Product Information

Application	WB
Primary Accession	O9NP77
Reactivity	Rat, Human, Mouse
Clonality	Monoclonal
Calculated MW	22574

SSU72 (11E17) Mouse Monoclonal antibody - Additional Information**Gene ID** 29101**Other Names**

RNA polymerase II subunit A C-terminal domain phosphatase SSU72, CTD phosphatase SSU72, 3.1.3.16, SSU72

Storage Conditions

-20°C

SSU72 (11E17) Mouse Monoclonal antibody - Protein Information**Name** SSU72**Function**

Protein phosphatase that catalyzes the dephosphorylation of the C-terminal domain of RNA polymerase II. Plays a role in RNA processing and termination. Plays a role in pre-mRNA polyadenylation via its interaction with SYMPK.

Cellular Location

Nucleus. Cytoplasm. Note=Predominantly in the cytosol

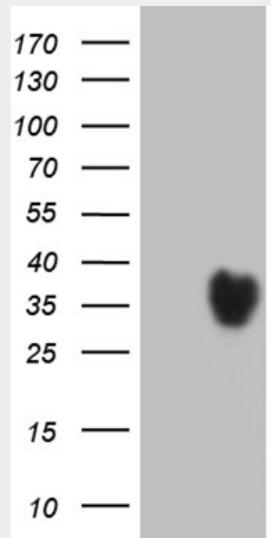
SSU72 (11E17) Mouse Monoclonal antibody - Protocols

Provided below are standard protocols that you may find useful for product applications.

- [Western Blot](#)
- [Blocking Peptides](#)
- [Dot Blot](#)
- [Immunohistochemistry](#)
- [Immunofluorescence](#)
- [Immunoprecipitation](#)
- [Flow Cytometry](#)

- [Cell Culture](#)

SSU72 (11E17) Mouse Monoclonal antibody - Images



HEK293T cells were transfected with the pCMV6-ENTRY control (Left lane) or pCMV6-ENTRY SSU72 (Right lane) cDNA for 48 hrs and lysed. Equivalent amounts of cell lysates (5 ug per lane) were separated by SDS-PAGE and immunoblotted with anti-SSU72 (1:2000). Positive lysates (100ug) and (20ug) can be purchased separately from biodragon.