

**PPA2 (6W7) Mouse Monoclonal antibody**  
**PPA2 (6W7) Mouse Monoclonal antibody**  
Catalog # AP93864

## Specification

---

### PPA2 (6W7) Mouse Monoclonal antibody - Product Information

Application	WB, IHC
Primary Accession	<a href="#">O9H2U2</a>
Reactivity	Human
Clonality	Monoclonal
Calculated MW	37920

### PPA2 (6W7) Mouse Monoclonal antibody - Additional Information

Gene ID 27068

#### Other Names

Inorganic pyrophosphatase 2, mitochondrial, 3.6.1.1, Pyrophosphatase SID6-306, Pyrophosphate phospho-hydrolase 2, PPase 2, PPA2

#### Storage Conditions

-20°C

### PPA2 (6W7) Mouse Monoclonal antibody - Protein Information

Name PPA2

#### Function

Hydrolyzes inorganic pyrophosphate (PubMed: <http://www.uniprot.org/citations/27523597> target="\_blank">27523597</a>). This activity is essential for correct regulation of mitochondrial membrane potential, and mitochondrial organization and function (PubMed: <http://www.uniprot.org/citations/27523598> target="\_blank">27523598</a>).

#### Cellular Location

Mitochondrion.

#### Tissue Location

Detected in brain, gastric carcinoma, lung, ovary, skeletal muscle, umbilical cord blood and a cell line derived from kidney proximal tubule epithelium.

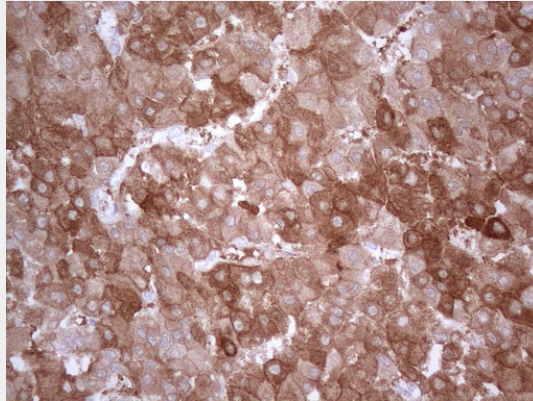
### PPA2 (6W7) Mouse Monoclonal antibody - Protocols

Provided below are standard protocols that you may find useful for product applications.

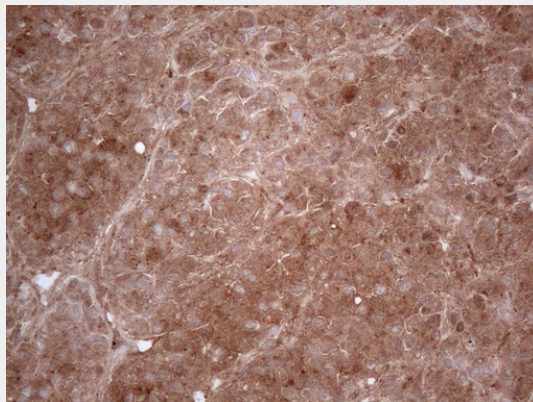
- [Western Blot](#)

- [Blocking Peptides](#)
- [Dot Blot](#)
- [Immunohistochemistry](#)
- [Immunofluorescence](#)
- [Immunoprecipitation](#)
- [Flow Cytometry](#)
- [Cell Culture](#)

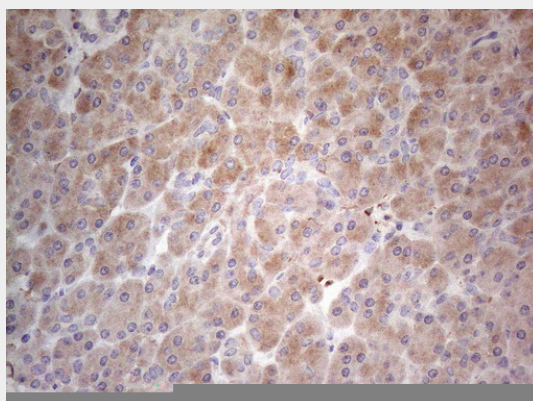
### PPA2 (6W7) Mouse Monoclonal antibody - Images



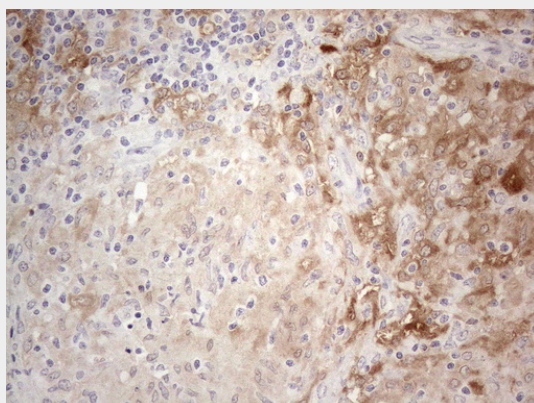
Immunohistochemical staining of paraffin-embedded Carcinoma of Human liver tissue using anti-PPA2 mouse monoclonal antibody. (Heat-induced epitope retrieval by 1mM EDTA in 10mM Tris buffer (pH8.5) at 120°C for 3min, AP93864) (1:150)



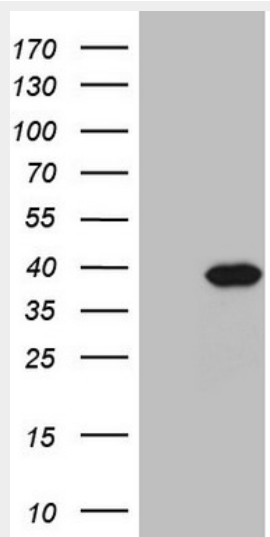
Immunohistochemical staining of paraffin-embedded Human liver tissue within the normal limits using anti-PPA2 mouse monoclonal antibody. (Heat-induced epitope retrieval by 1mM EDTA in 10mM Tris buffer (pH8.5) at 120°C for 3min, AP93864) (1:150)



Immunohistochemical staining of paraffin-embedded Human pancreas tissue within the normal limits using anti-PPA2 mouse monoclonal antibody. (Heat-induced epitope retrieval by 1mM EDTA in 10mM Tris buffer (pH8.5) at 120°C for 3min, AP93864) (1:150)



Immunohistochemical staining of paraffin-embedded Human lymph node tissue within the normal limits using anti-PPA2 mouse monoclonal antibody. (Heat-induced epitope retrieval by 1mM EDTA in 10mM Tris buffer (pH8.5) at 120°C for 3min, AP93864) (1:150)



HEK293T cells were transfected with the pCMV6-ENTRY control (Left lane) or pCMV6-ENTRY PPA2 (Right lane) cDNA for 48 hrs and lysed. Equivalent amounts of cell lysates (5 ug per lane) were separated by SDS-PAGE and immunoblotted with anti-PPA2 (Cat# AP93864)(1:2000). Positive lysates (100ug) and (20ug) can be purchased separately from biodragon.

### **PPA2 (6W7) Mouse Monoclonal antibody - Background**

The protein encoded by this gene is localized to the mitochondrion, is highly similar to members of the inorganic pyrophosphatase (PPase) family, and contains the signature sequence essential for the catalytic activity of PPase. PPases catalyze the hydrolysis of pyrophosphate to inorganic phosphate, which is important for the phosphate metabolism of cells. Alternate transcriptional splice variants, encoding different isoforms, have been characterized. [provided by RefSeq, Jul 2008]